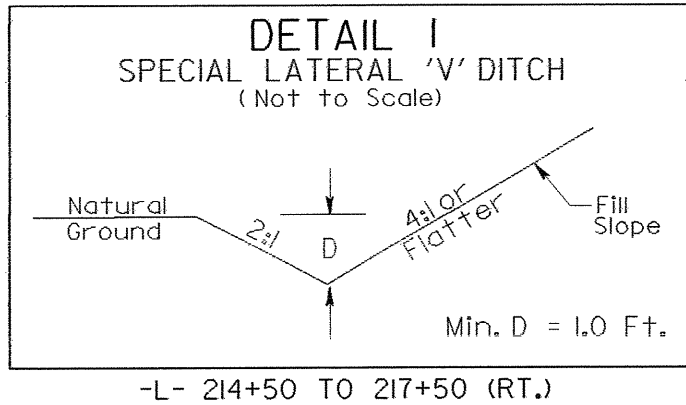
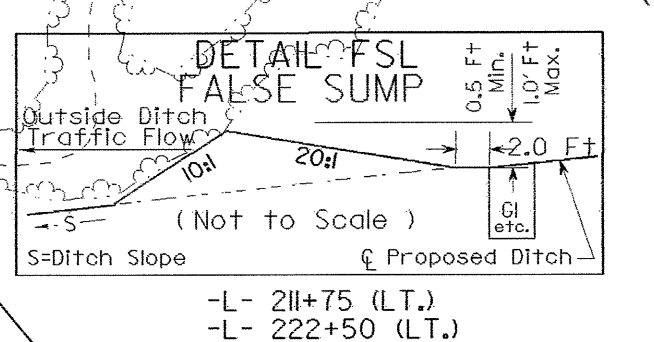
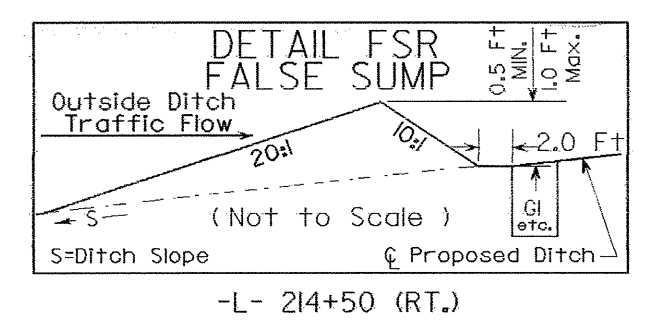
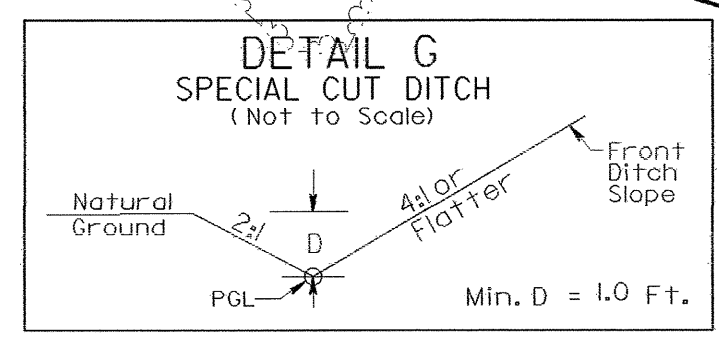
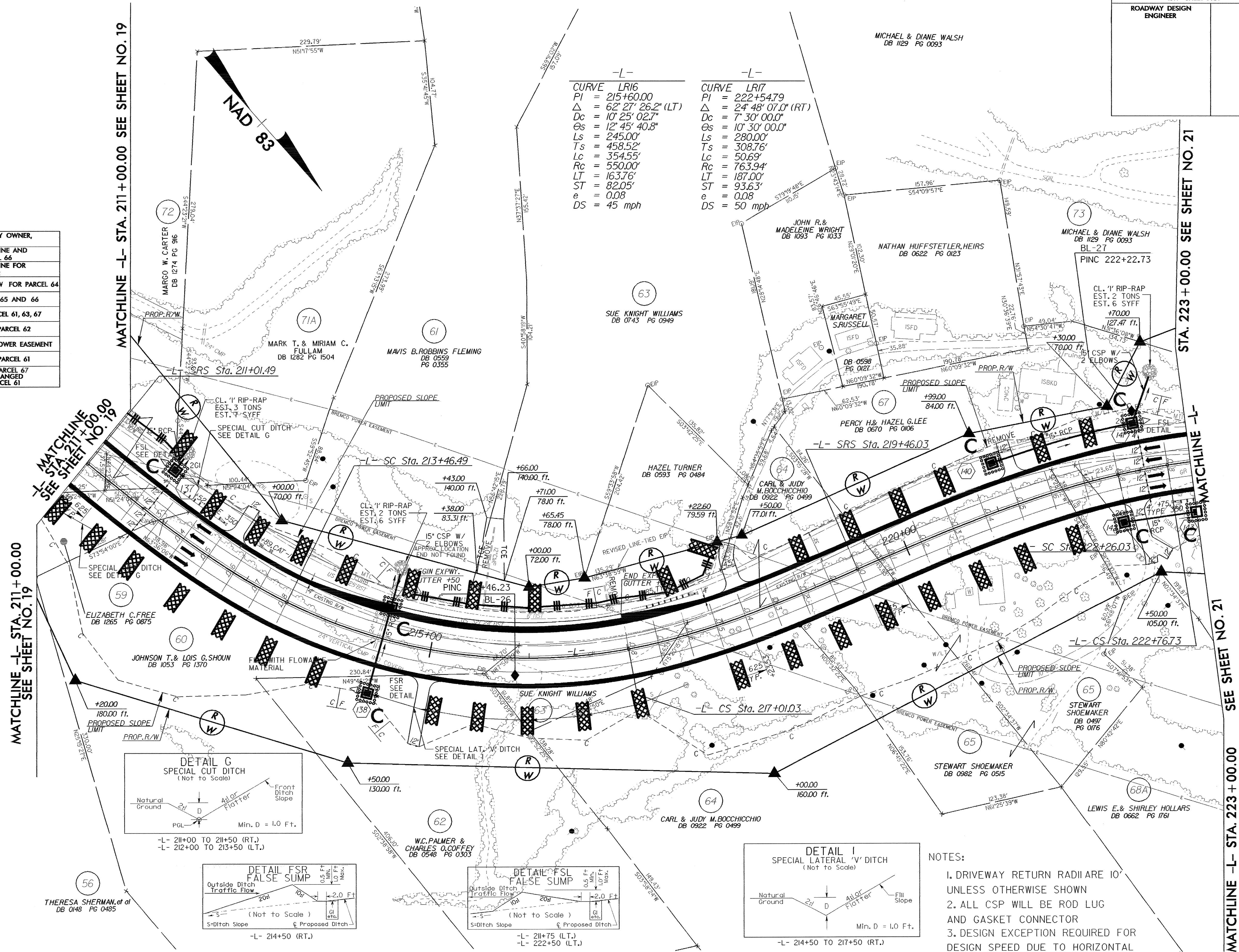


⚠	61703	CHANGED PROPERTY OWNER, PARCEL 59
⚠	61703	ADDED PROPERTY LINE AND REASSIGNED PARCEL 66
⚠	61703	ADDED PROPERTY LINE FOR PARCELS 71 AND 72
⚠	61703	CHANGED PROP. RW FOR PARCEL 64
⚠	61703	COMBINED PARCEL 65 AND 66
⚠	72203	ADJUSTED RW, PARCEL 61, 63, 67
⚠	72203	ADDED DRIVEWAY, PARCEL 62
⚠	81503	ADDED BREMCO POWER EASEMENT
⚠	90903	ADDED DRIVEWAY, PARCEL 61
⚠	42104	ADDED WELL TO PARCEL 67 PARCEL NUMBER CHANGED NAME CHANGE PARCEL 61

-L-  
 CURVE LR16  
 PI = 215+60.00  
 $\Delta = 62^\circ 27' 26.2''$  (LT)  
 Dc = 10' 25' 02.7"  
 $\Theta_s = 12^\circ 45' 40.8''$   
 Ls = 245.00'  
 Ts = 458.52'  
 Lc = 354.55'  
 Rc = 550.00'  
 LT = 163.76'  
 ST = 82.05'  
 e = 0.08  
 DS = 45 mph

-L-  
 CURVE LR17  
 PI = 222+54.79  
 $\Delta = 24^\circ 48' 07.0''$  (RT)  
 Dc = 7' 30' 00.0"  
 $\Theta_s = 10^\circ 30' 00.0''$   
 Ls = 280.00'  
 Ts = 308.76'  
 Lc = 50.69'  
 Rc = 763.94'  
 LT = 187.00'  
 ST = 93.63'  
 e = 0.08  
 DS = 50 mph



NOTES:  
 1. DRIVEWAY RETURN RADIARE 10' UNLESS OTHERWISE SHOWN  
 2. ALL CSP WILL BE ROD LUG AND GASKET CONNECTOR  
 3. DESIGN EXCEPTION REQUIRED FOR DESIGN SPEED DUE TO HORIZONTAL RADIUS AT STA. -L- 215+60

REFERENCES:  
 FOR -L- PROFILE SEE SHEET 48

MATCHLINE -L- STA. 211+00.00  
 SEE SHEET NO. 19

MATCHLINE -L- STA. 211+00.00  
 SEE SHEET NO. 19

MATCHLINE -L- STA. 223+00.00  
 SEE SHEET NO. 21

MATCHLINE -L- STA. 223+00.00  
 SEE SHEET NO. 21

THERESA SHERMAN, et al  
 DB 0148 PG 0485