
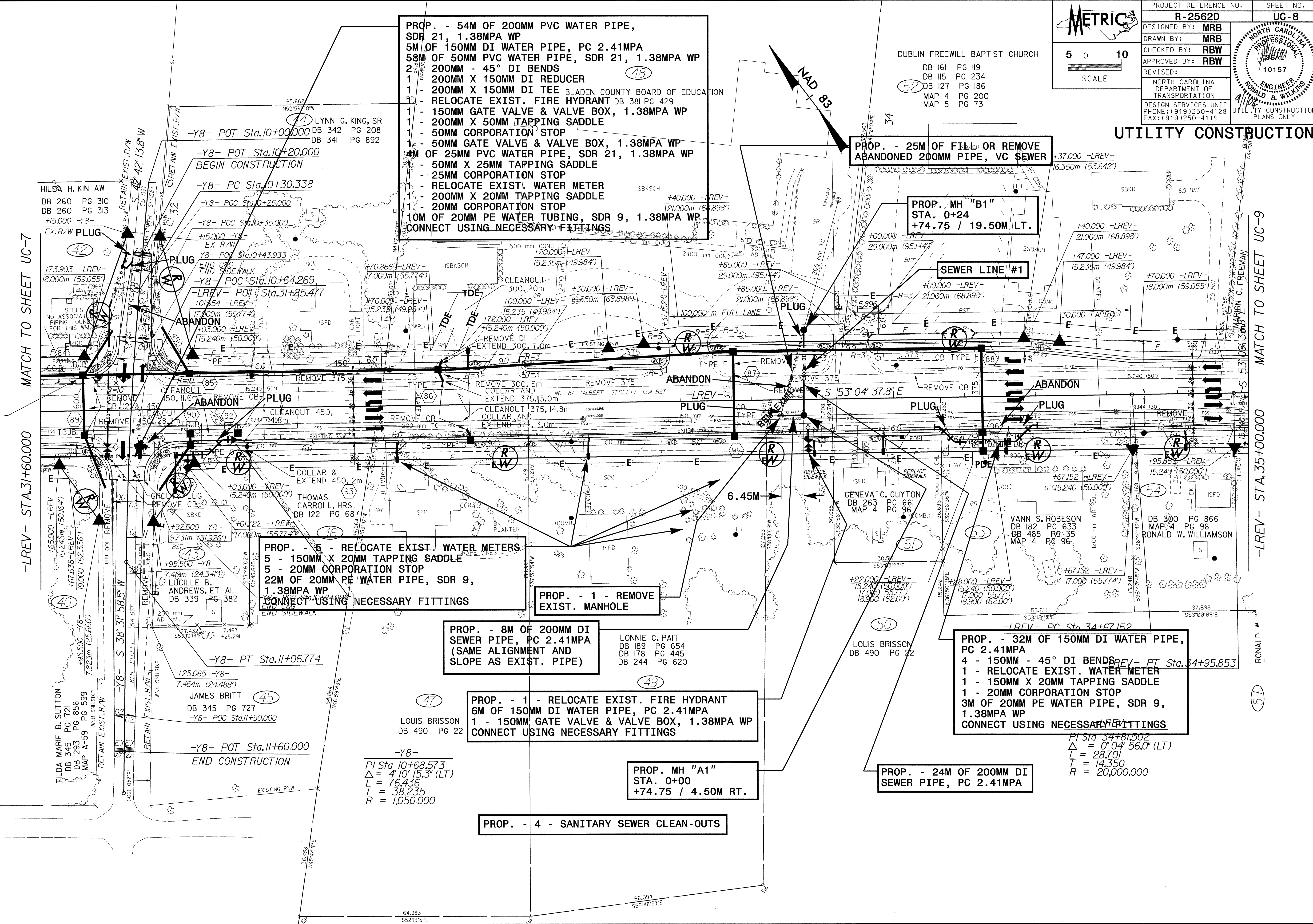


042597  
R:\N\13-AUG-2004 15:03 N:\2562D\11\_UC.ut.psh.dgn

 5 0 10 SCALE	PROJECT REFERENCE NO.	SHEET NO.
	R-2562D	UC-8
DESIGNED BY: MRB DRAWN BY: MRB CHECKED BY: RBW APPROVED BY: RBW REVISED:		
NORTH CAROLINA PROFESSIONAL ENGINEER RONALD B. WILLIAMS 10157		
NORTH CAROLINA DEPARTMENT OF TRANSPORTATION DESIGN SERVICES UNIT PHONE: (919) 250-4128 FAX: (919) 250-4119		

### UTILITY CONSTRUCTION



PROP. - 54M OF 200MM PVC WATER PIPE, SDR 21, 1.38MPA WP  
 5M OF 150MM DI WATER PIPE, PC 2.41MPA  
 58M OF 50MM PVC WATER PIPE, SDR 21, 1.38MPA WP  
 2 200MM - 45° DI BENDS  
 1 200MM X 150MM DI REDUCER  
 1 - 200MM X 150MM DI TEE  
 1 - RELOCATE EXIST. FIRE HYDRANT DB 381 PG 429  
 1 - 150MM GATE VALVE & VALVE BOX, 1.38MPA WP  
 1 - 200MM X 50MM TAPPING SADDLE  
 1 - 50MM CORPORATION STOP  
 1 - 50MM GATE VALVE & VALVE BOX, 1.38MPA WP  
 4M OF 25MM PVC WATER PIPE, SDR 21, 1.38MPA WP  
 - 50MM X 25MM TAPPING SADDLE  
 - 25MM CORPORATION STOP  
 1 - RELOCATE EXIST. WATER METER  
 1 - 200MM X 20MM TAPPING SADDLE  
 1 - 20MM CORPORATION STOP  
 10M OF 20MM PE WATER TUBING, SDR 9, 1.38MPA WP  
 CONNECT USING NECESSARY FITTINGS

PROP. - 25M OF FILL OR REMOVE ABANDONED 200MM PIPE, VC SEWER

PROP. MH "B1" STA. 0+24 +74.75 / 19.50M LT.

SEWER LINE #1

PROP. - 5 - RELOCATE EXIST. WATER METERS  
 5 - 150MM X 20MM TAPPING SADDLE  
 5 - 20MM CORPORATION STOP  
 22M OF 20MM PE WATER PIPE, SDR 9, 1.38MPA WP  
 CONNECT USING NECESSARY FITTINGS

PROP. - 1 - REMOVE EXIST. MANHOLE

PROP. - 8M OF 200MM DI SEWER PIPE, PC 2.41MPA (SAME ALIGNMENT AND SLOPE AS EXIST. PIPE)

PROP. - 1 - RELOCATE EXIST. FIRE HYDRANT  
 6M OF 150MM DI WATER PIPE, PC 2.41MPA  
 1 - 150MM GATE VALVE & VALVE BOX, 1.38MPA WP  
 CONNECT USING NECESSARY FITTINGS

PROP. MH "A1" STA. 0+00 +74.75 / 4.50M RT.

PROP. - 4 - SANITARY SEWER CLEAN-OUTS

PROP. - 32M OF 150MM DI WATER PIPE, PC 2.41MPA  
 4 - 150MM - 45° DI BENDS  
 1 - RELOCATE EXIST. WATER METER  
 1 - 150MM X 20MM TAPPING SADDLE  
 1 - 20MM CORPORATION STOP  
 3M OF 20MM PE WATER PIPE, SDR 9, 1.38MPA WP  
 CONNECT USING NECESSARY FITTINGS

PI Sta. 34+81.502  
 $\Delta = 0.04' 56.0" (LT)$   
 $L = 28.70'$   
 $T = 14.350'$   
 $R = 20,000.000'$

LOUIS BRISSON  
 DB 490 PG 22  
 -Y8-  
 $PI\ Sta.\ 10+68.573$   
 $\Delta = 4' 10" 15.3" (LT)$   
 $L = 76.436'$   
 $T = 38.235'$   
 $R = 1,050.000'$

JAMES BRITT  
 DB 345 PG 727  
 -Y8- POC Sta. 11+50.000

TILDA MARIE B. SUTTON  
 DB 345 PG 721  
 DB 293 PG 856  
 MAP A-59 PG 599  
 MAP A-59 PG 599

HILBA H. KINLAW  
 DB 260 PG 310  
 DB 260 PG 313  
 +15.000 -Y8-  
 EX. R/W PLUG

MATCH TO SHEET UC-7

-LREV- STA. 31+60.000

MATCH TO SHEET UC-9

-LREV- STA. 35+00.000

RONALD W. WILLIAMSON