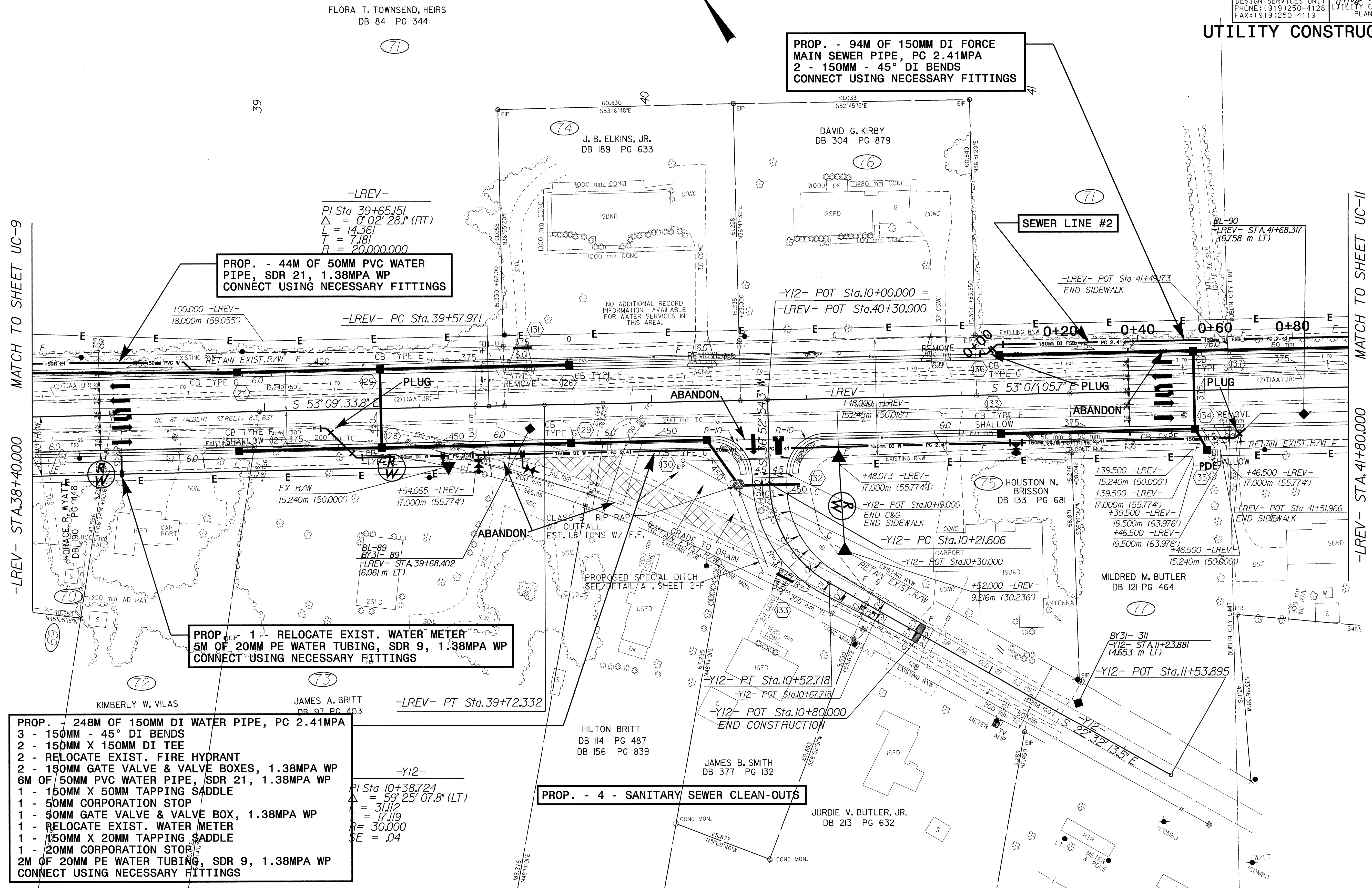
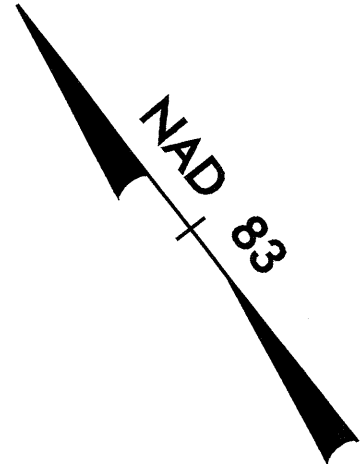


UTILITY CONSTRUCTION



MATCH TO SHEET UC-9

MATCH TO SHEET UC-11

PROP. - 248M OF 150MM DI WATER PIPE, PC 2.41MPA
 3 - 150MM - 45° DI BENDS
 2 - 150MM X 150MM DI TEE
 2 - RELOCATE EXIST. FIRE HYDRANT
 2 - 150MM GATE VALVE & VALVE BOXES, 1.38MPA WP
 6M OF 50MM PVC WATER PIPE, SDR 21, 1.38MPA WP
 1 - 150MM X 50MM TAPPING SADDLE
 1 - 50MM CORPORATION STOP
 1 - 50MM GATE VALVE & VALVE BOX, 1.38MPA WP
 1 - RELOCATE EXIST. WATER METER
 1 - 150MM X 20MM TAPPING SADDLE
 1 - 20MM CORPORATION STOP
 2M OF 20MM PE WATER TUBING, SDR 9, 1.38MPA WP
 CONNECT USING NECESSARY FITTINGS

PROP. - 44M OF 50MM PVC WATER
 PIPE, SDR 21, 1.38MPA WP
 CONNECT USING NECESSARY FITTINGS

PROP. - 94M OF 150MM DI FORCE
 MAIN SEWER PIPE, PC 2.41MPA
 2 - 150MM - 45° DI BENDS
 CONNECT USING NECESSARY FITTINGS

PROP. - 1 - RELOCATE EXIST. WATER METER
 5M OF 20MM PE WATER TUBING, SDR 9, 1.38MPA WP
 CONNECT USING NECESSARY FITTINGS

PROP. - 4 - SANITARY SEWER CLEAN-OUTS

-LREV-
 PI Sta 39+65.151
 $\Delta = 0^{\circ} 02' 28.1" (RT)$
 $L = 14.361$
 $T = 7.181$
 $R = 20,000.000$

-LREV- PC Sta.39+57.971

-Y12- POT Sta.10+00.000 =
 -LREV- POT Sta.40+30.000

SEWER LINE #2

-LREV- POT Sta.41+49.173
END SIDEWALK

BL-90
-LREV- STA.41+68.317
(6,758 m LT)

-LREV- STA.38+40.000

-LREV- STA.41+80.000

-Y12-
 PI Sta 10+38.724
 $\Delta = 59^{\circ} 25' 07.8" (LT)$
 $L = 31.112$
 $T = 17.119$
 $R = 30,000$
 $SE = .04$

-LREV- PT Sta.39+72.332

-Y12- PT Sta.10+52.718

-Y12- POT Sta.10+67.718

-Y12- POT Sta.10+80.000
END CONSTRUCTION

BY31- 311
-Y12- STA.41+23.881
(4,653 m LT)

-Y12- POT Sta.41+53.895

R:\US113\2562D\13\UC10.dwg, 10/10/04, 10:30 AM, R:\US113\2562D\13\UC10.dwg, 10/10/04, 10:30 AM, R:\US113\2562D\13\UC10.dwg, 10/10/04, 10:30 AM