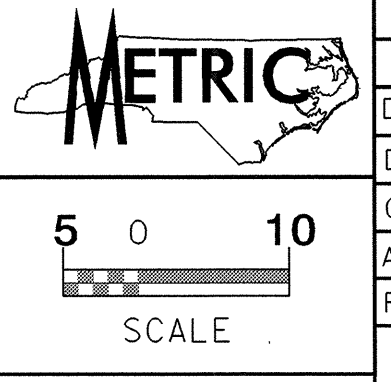


042587
R:\11-30-AUG-2004 08:06 R_2562D15_UC12.ut_psh.dgn
11/30/04 10:51:24



PROJECT REFERENCE NO.	R-2562D	SHEET NO.	UC-12
DESIGNED BY:	MRB		
DRAWN BY:	MRB		
CHECKED BY:	RBW		
APPROVED BY:	RBW		
REVISED:			
NORTH CAROLINA DEPARTMENT OF TRANSPORTATION DESIGN SERVICES UNIT PHONE: (919) 250-4128 FAX: (919) 250-4119			

UTILITY CONSTRUCTION

PROP. - 238M OF 150MM DI WATER PIPE, PC 2.41MPA
4 - 150MM - 45° DI BENDS
4 - RELOCATE EXIST. WATER METERS
4 - 150MM X 20MM TAPPING SADDLES
4 - 20MM CORPORATION STOPS
36M OF 20MM PE WATER TUBING, SDR 9, 1.38MPA WP
CONNECT USING NECESSARY FITTINGS

PROP. - 160M OF 150MM DI FORCE MAIN
SEWER PIPE, PC 2.41MPA
4 - 150MM - 45° DI BENDS
CONNECT USING NECESSARY FITTINGS

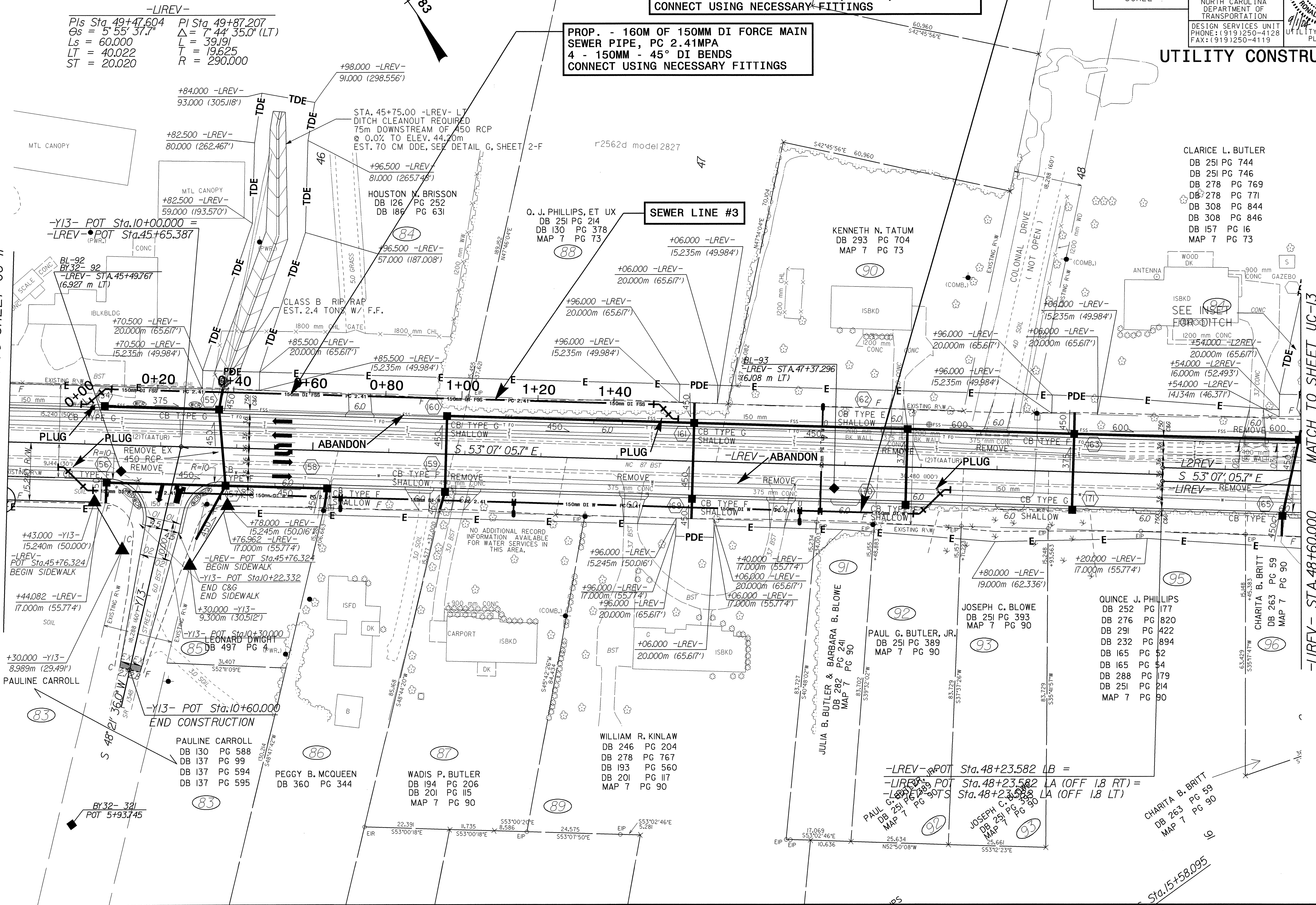
-LIREV-
PIs Sta. 49+47.604 PI Sta. 49+87.207
Gs = 5° 55' 37.7" Δ = 7° 44' 35.0" (LT)
Ls = 60.000 L = 39.19
LT = 40.022 T = 19.625
ST = 20.020 R = 290.000

MATCH TO SHEET UC-11

-LIREV- STA.45+20.000

MATCH TO SHEET UC-13

-LIREV- STA.48+60.000



CLARICE L. BUTLER
DB 251 PG 744
DB 251 PG 746
DB 278 PG 769
DB 278 PG 771
DB 308 PG 844
DB 308 PG 846
DB 157 PG 16
MAP 7 PG 73

QUINCE J. PHILLIPS
DB 252 PG 177
DB 276 PG 820
DB 291 PG 422
DB 232 PG 894
DB 165 PG 52
DB 165 PG 54
DB 288 PG 179
DB 251 PG 214
MAP 7 PG 90

CHARITA B. BRITT
DB 263 PG 59
MAP 7 PG 90

PAUL G. BUTLER, JR.
DB 251 PG 389
MAP 7 PG 90

JOSEPH C. BLOWE
DB 251 PG 393
MAP 7 PG 90

WILLIAM R. KINLAW
DB 246 PG 204
DB 278 PG 767
DB 193 PG 560
DB 201 PG 117
MAP 7 PG 90

WADIS P. BUTLER
DB 194 PG 206
DB 201 PG 115
MAP 7 PG 90

PEGGY B. MCQUEEN
DB 360 PG 344

PAULINE CARROLL
DB 130 PG 588
DB 137 PG 99
DB 137 PG 594
DB 137 PG 595

PAULINE CARROLL
DB 130 PG 588
DB 137 PG 99
DB 137 PG 594
DB 137 PG 595

+43.000 -Y13-
15.240m (50.000')
-LIREV- POT Sta.45+76.324
BEGIN SIDEWALK
+44.082 -LIREV-
17.000m (55.774')

+78.000 -LIREV-
15.245m (50.016')
+76.962 -LIREV-
17.000m (55.774')
-LIREV- POT Sta.45+76.324
BEGIN SIDEWALK
-Y13- POT Sta.10+22.332
END C&G
END SIDEWALK
+30.000 -Y13-
9.300m (30.512')

-Y13- POT Sta.10+60.000
END CONSTRUCTION

-LIREV- POT Sta.48+23.582 LB =
-LIREV- POT Sta.48+23.582 LA (OFF 1.8 RT) =
-LIREV- POT Sta.48+23.582 LA (OFF 1.8 LT)

Sta.15+58.095