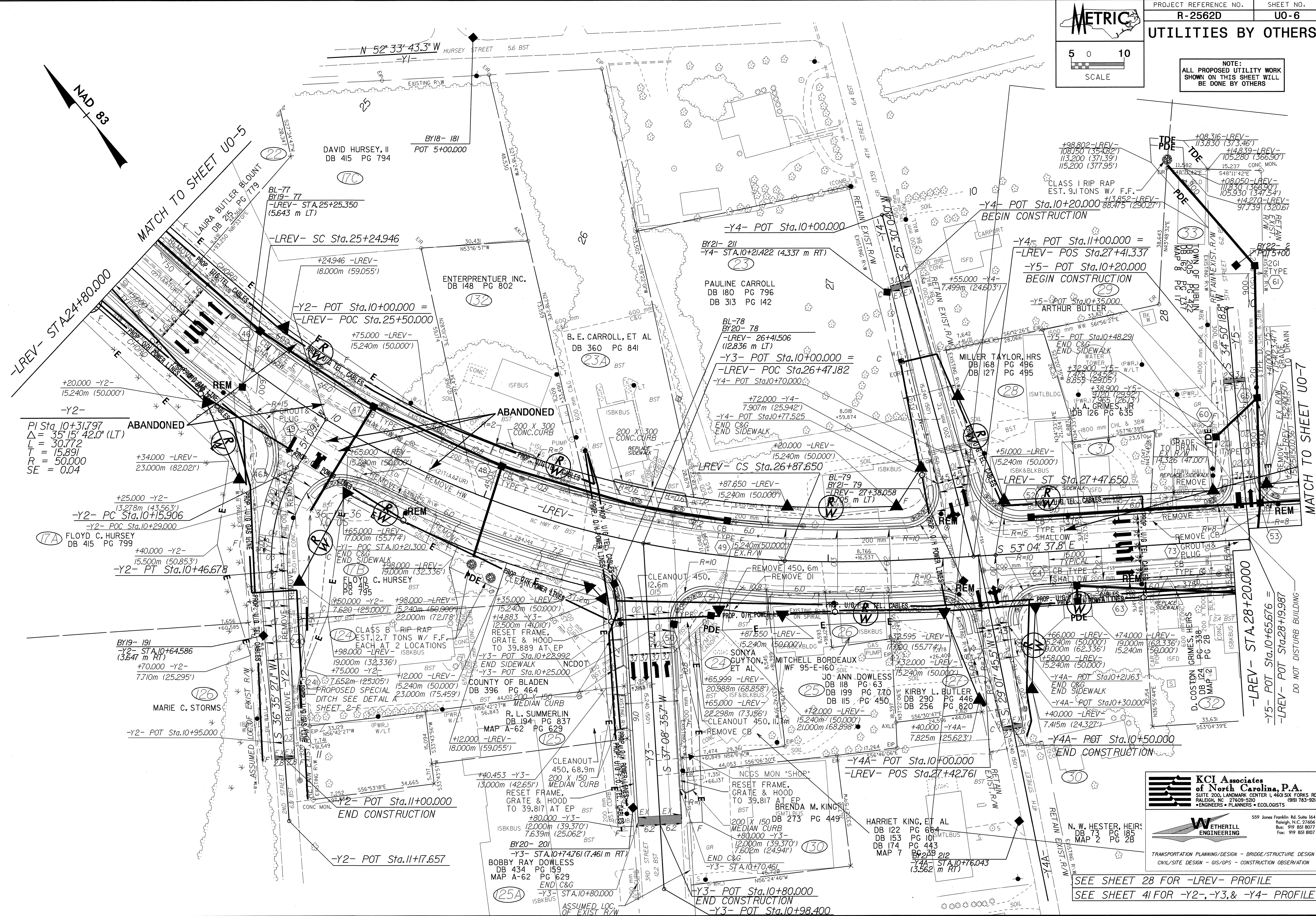
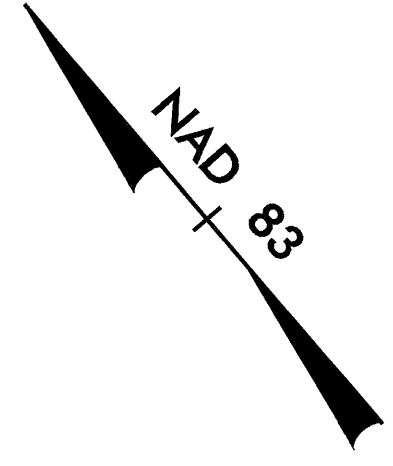


**UTILITIES BY OTHERS**

NOTE:  
ALL PROPOSED UTILITY WORK SHOWN ON THIS SHEET WILL BE DONE BY OTHERS



ABANDONED  
 PI Sta. 10+31.797  
 $\Delta = 35^{\circ}15'42.0''$  (LT)  
 L = 30.772  
 T = 15.891  
 R = 50.000  
 SE = 0.04

FLOYD C. HURSEY  
 DB 415 PG 799

BY19- 191  
 -Y2- STA.10+64.586  
 (3.647 m RT)  
 +70.000 -Y2-  
 7.710m (25.295')

MARIE C. STORMS

-Y2- POT Sta.10+95.000

-Y2- POT Sta.11+00.000  
 END CONSTRUCTION

-Y2- POT Sta.11+7.657

CLEANOUT 450, 68.9m  
 200 X 150  
 MEDIAN CURB  
 RESET FRAME,  
 GRATE & HOOD  
 TO 39.817 AT EP  
 +80.000 -Y3-  
 ISBKBUS (20.000m (39.370'))  
 +80.000 -Y3-  
 12.000m (39.370')  
 7.602m (24.941')

BY20- 201  
 -Y3- STA.10+74.761 (7.461 m RT)

BOBBY RAY DOWLESS  
 DB 434 PG 159  
 MAP A-62 PG 629

-Y3- STA.10+80.000  
 END CONSTRUCTION

-Y3- POT Sta.10+98.400

SONYA GUYTON  
 ET AL

MITCHELL BORDEAUX  
 WF 95-E-160

JO ANN DOWLESS  
 DB 118 PG 63  
 DB 199 PG 770  
 DB 290 PG 446  
 DB 256 PG 820

KIRBY L. BUTLER  
 DB 290 PG 446  
 DB 256 PG 820

-Y4- POT Sta.10+00.000  
 -LREV- POS Sta.27+42.761

HARRIET KING, ET AL  
 DB 122 PG 664  
 DB 153 PG 101  
 DB 174 PG 443  
 MAP 2 PG 212

-Y4- STA.10+76.043  
 (3.562 m RT)

SEE SHEET 28 FOR -LREV- PROFILE  
 SEE SHEET 41 FOR -Y2-, -Y3, & -Y4- PROFILE

**KCI Associates**  
 of North Carolina, P.A.  
 SUITE 200, LANDMARK CENTER 1, 4601 SK FORKS RD.  
 RALEIGH, NC 27609-3920  
 • ENGINEERS • PLANNERS • ECOLOGISTS

**WETHERILL ENGINEERING**  
 559 Jones Franklin Rd. Suite 164  
 Raleigh, N.C. 27606  
 Fax: 919 861 8077  
 Fax: 919 861 8077

TRANSPORTATION PLANNING/DESIGN - BRIDGE/STRUCTURE DESIGN  
 CIVIL/SITE DESIGN - GIS/GPS - CONSTRUCTION OBSERVATION