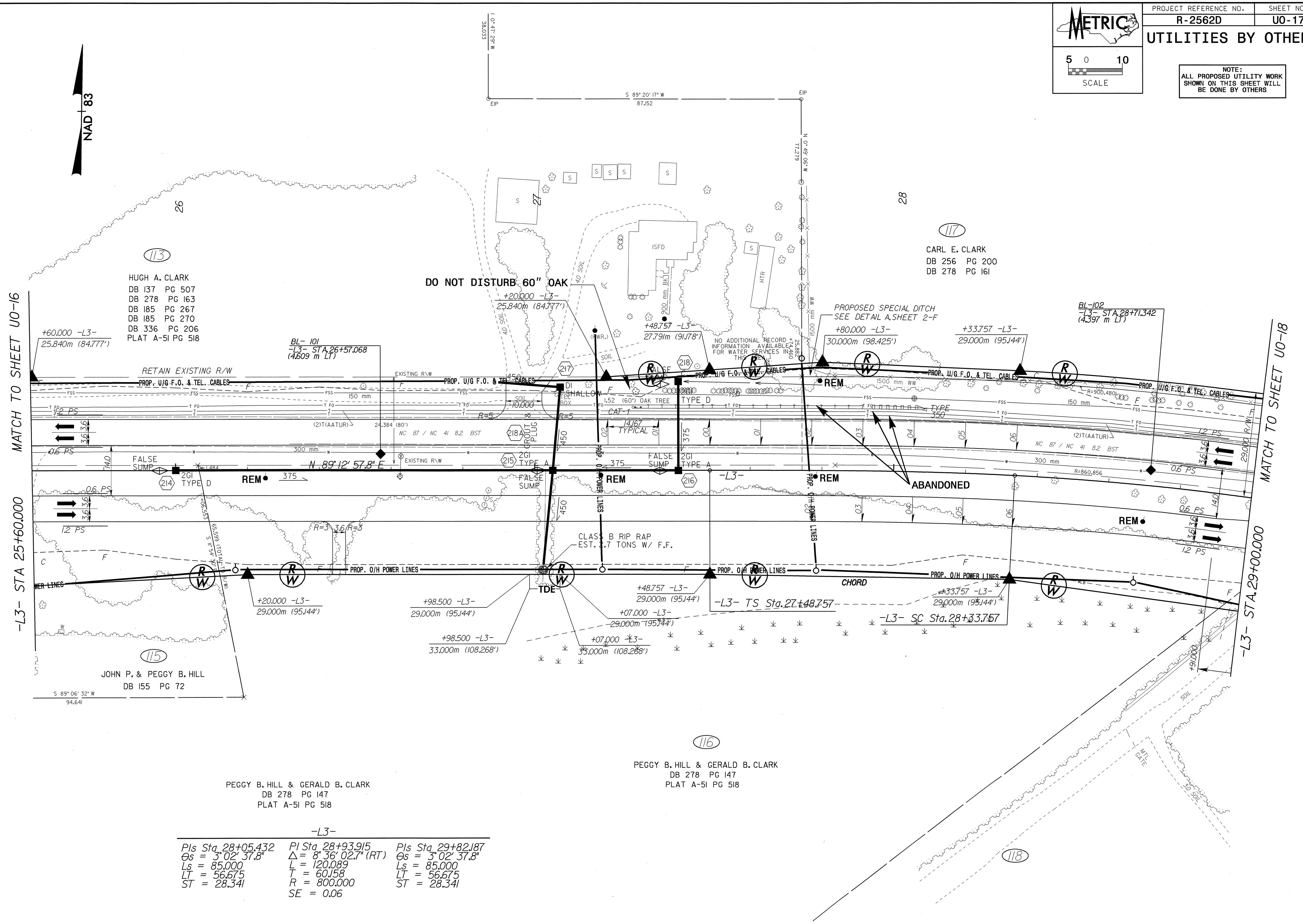
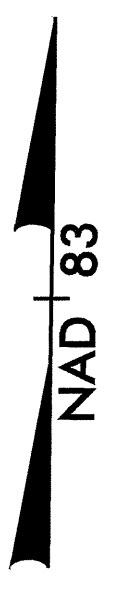


NOTE:  
 ALL PROPOSED UTILITY WORK  
 SHOWN ON THIS SHEET WILL  
 BE DONE BY OTHERS



113  
 HUGH A. CLARK  
 DB 137 PG 507  
 DB 278 PG 163  
 DB 185 PG 267  
 DB 185 PG 270  
 DB 336 PG 206  
 PLAT A-5I PG 518

117  
 CARL E. CLARK  
 DB 256 PG 200  
 DB 278 PG 161

115  
 JOHN P. & PEGGY B. HILL  
 DB 155 PG 72

PEGGY B. HILL & GERALD B. CLARK  
 DB 278 PG 147  
 PLAT A-5I PG 518

116  
 PEGGY B. HILL & GERALD B. CLARK  
 DB 278 PG 147  
 PLAT A-5I PG 518

-L3-

PIs Sta. 28+05.432	PI Sta. 28+93.915	PIs Sta. 29+82.187
Os = 3° 02' 37.8"	Δ = 8° 36' 02.7" (RT)	Os = 3° 02' 37.8"
Ls = 85.000	L = 120.089	Ls = 85.000
LT = 56.675	T = 60.158	LT = 56.675
ST = 28.341	R = 800.000	ST = 28.341
	SE = 0.06	

22-SEP-2004 15:24  
 R:\Utilities\Projects\R-2562D\UO-17\ut\_psh.dgn  
 mbright RT DS212421