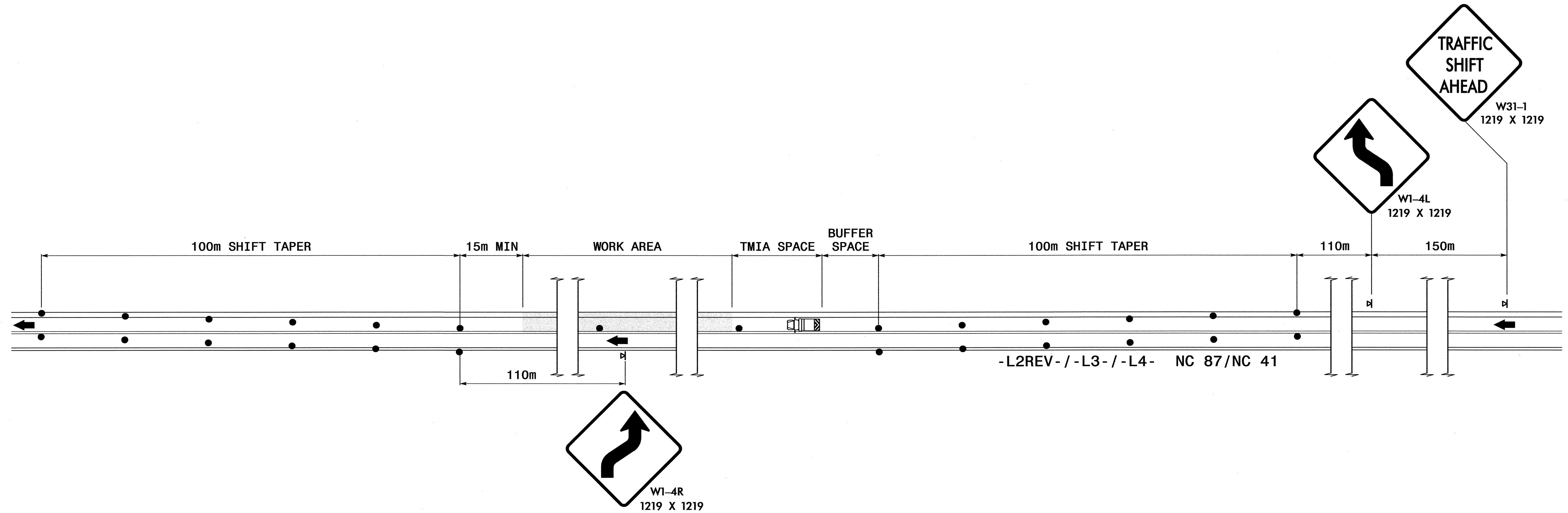
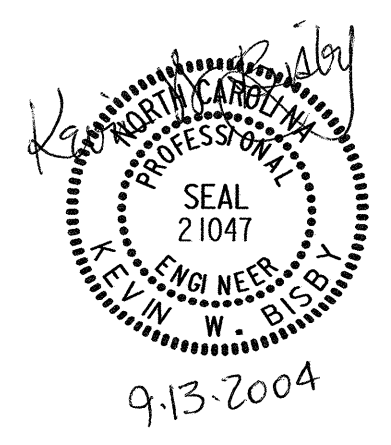




PROJ. REFERENCE NO.	SHEET NO.
R-2562D	TCP-45



- NOTES:
- PLACE DRUMS IN TAPER AREAS ON 18m SPACING.
  - INSTALL TRAFFIC CONTROL DEVICES WITH THE FLOW OF TRAFFIC, BEGINNING WITH DEVICES ON THE UPSTREAM SIDE OF TRAFFIC. REMOVE TRAFFIC CONTROL DEVICES AGAINST THE FLOW OF TRAFFIC, BEGINNING WITH DEVICES ON THE DOWNSTREAM SIDE OF TRAFFIC.
  - TMIA'S ARE REQUIRED ONLY WHEN A BUFFER SPACE CAN NOT BE ATTAINED, OR WHEN DIRECTED BY THE ENGINEER. WHEN USED, POSITION THE TMIA TO MAINTAIN A ROLL-AHEAD DISTANCE AS RECOMMENDED BY THE MANUFACTURER.



DETAIL DRAWING FOR WORK ZONE TRAFFIC SHIFT	
SCALE: NONE	REVISIONS
DATE: 9/2004	
DWG. BY: KWB	
DESIGN BY: KWB	
REVIEWED BY: TRH	

9/13/2004 AM F:\Projects\weather\11\2562D\TrafficControl\TcpN-2562D Tcp-45.dwg