

10/26/04

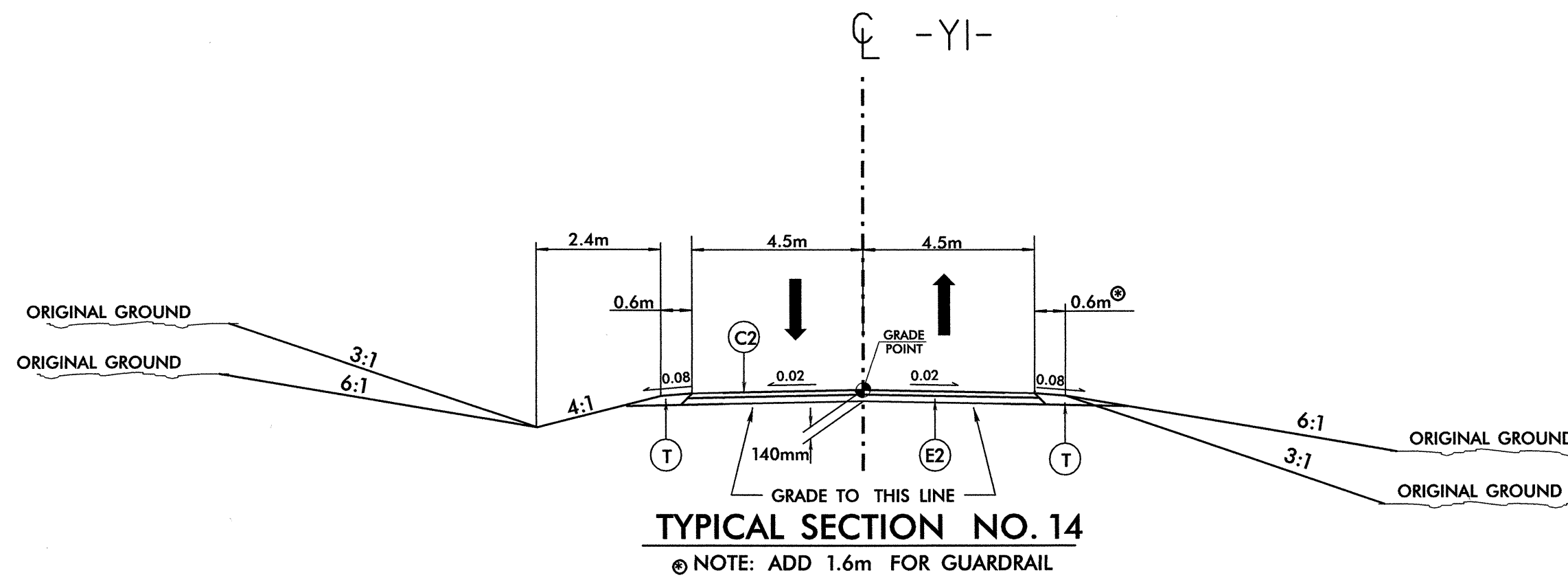
PAVEMENT SCHEDULE	
C1	50 mm ASPHALT CONC. SURFACE COURSE, TYPE S9.5C
C2	60 mm ASPHALT CONC. SURFACE COURSE, TYPE SF9.5A
C3	70 mm ASPHALT CONC. SURFACE COURSE, TYPE S9.5C
C4	VAR. ASPHALT CONC. SURFACE COURSE, TYPE SF9.5A
C5	VAR. ASPHALT CONC. SURFACE COURSE, TYPE S9.5C
D1	80 mm ASPHALT CONC. INTERMEDIATE COURSE, TYPE I19.0C
D2	110 mm ASPHALT CONC. INTERMEDIATE COURSE, TYPE I19.0C
D3	VAR. ASPHALT CONC. INTERMEDIATE COURSE, TYPE I19.0C
E1	75 mm ASPHALT CONC. BASE COURSE, TYPE B25.0C
E2	80 mm ASPHALT CONC. BASE COURSE, TYPE B25.0B
E3	90 mm ASPHALT CONC. BASE COURSE, TYPE B25.0B
E4	90 mm ASPHALT CONC. BASE COURSE, TYPE B25.0C
E5	110 mm ASPHALT CONC. BASE COURSE, TYPE B25.0B
E6	110 mm ASPHALT CONC. BASE COURSE, TYPE B25.0C
E7	VAR. ASPHALT CONC. BASE COURSE, TYPE B25.0B
E8	VAR. ASPHALT CONC. BASE COURSE, TYPE B25.0C
R1	750 mm CONCRETE CURB & GUTTER
R2	1.2m CONCRETE EXPRESSWAY GUTTER
R3	125 mm MONOLITHIC CONC. ISLAND
S	100mm CONCRETE SIDEWALK
T	EARTH MATERIAL
U	EXISTING PAVEMENT
W	VARIABLE DEPTH ASPHALT PAVEMENT

WETHERILL ENGINEERING
 559 Jones Franklin Rd. Suite 164
 Raleigh, N.C. 27606
 Dist: 919 851 8077 Fax: 919 851 8107

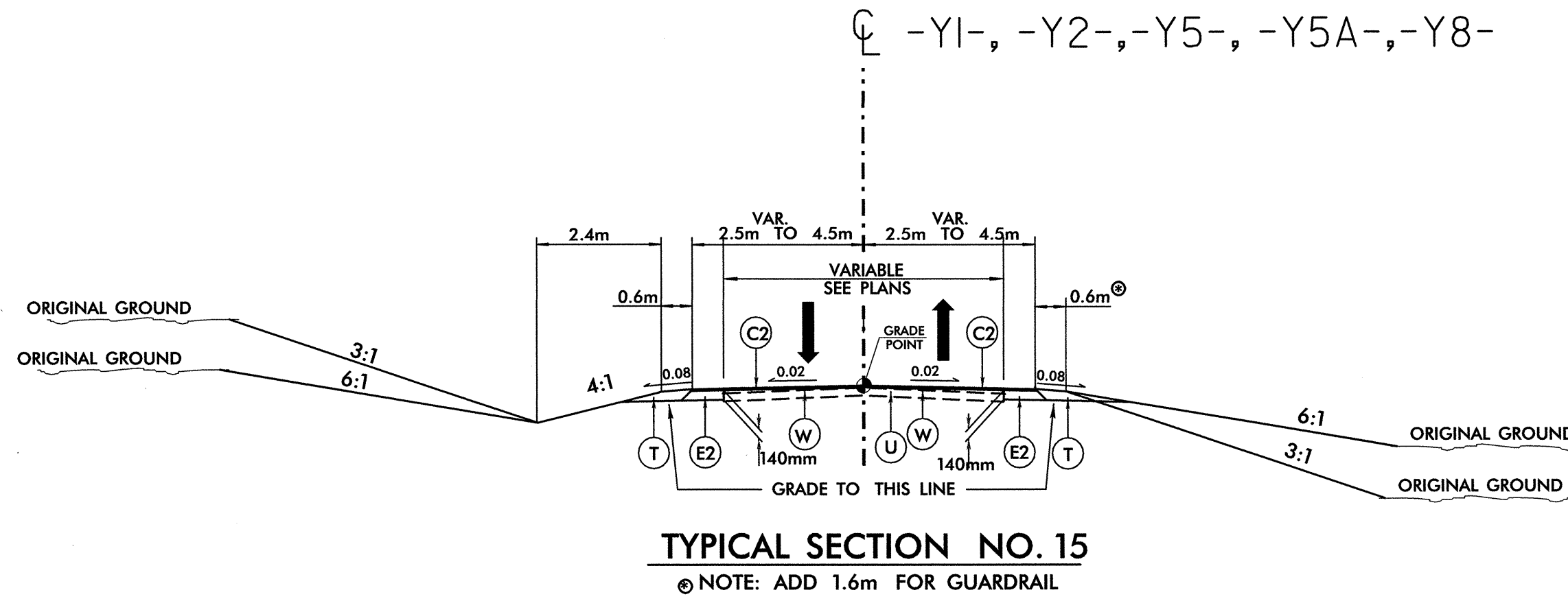
TRANSPORTATION PLANNING/DESIGN - BRIDGE/STRUCTURE DESIGN
 CIVIL/SITE DESIGN - GIS/GPS - CONSTRUCTION OBSERVATION



PROJECT REFERENCE NO. R-2562D	SHEET NO. 2-D
ROADWAY DESIGN ENGINEER	PAVEMENT DESIGN ENGINEER
<i>Professional Seal: SEAL 21116, ENGINEER, BOB A. MAY, 10/26/04</i>	<i>Professional Seal: SEAL 22896, ENGINEER, CLARK S. MORRISON, 11/9/04</i>

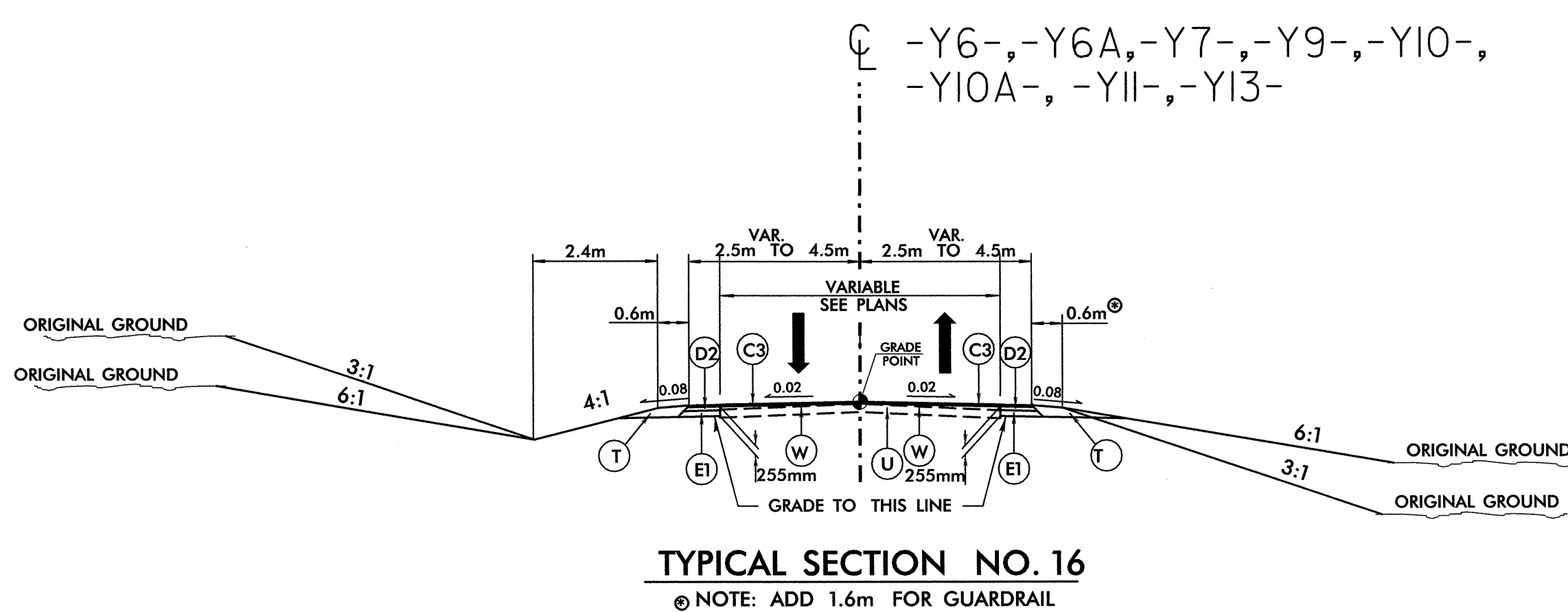


USE TYPICAL NO. 14 FOR THE FOLLOWING
 -Y1- STA. 10+89.777 TO STA. 11+05.246



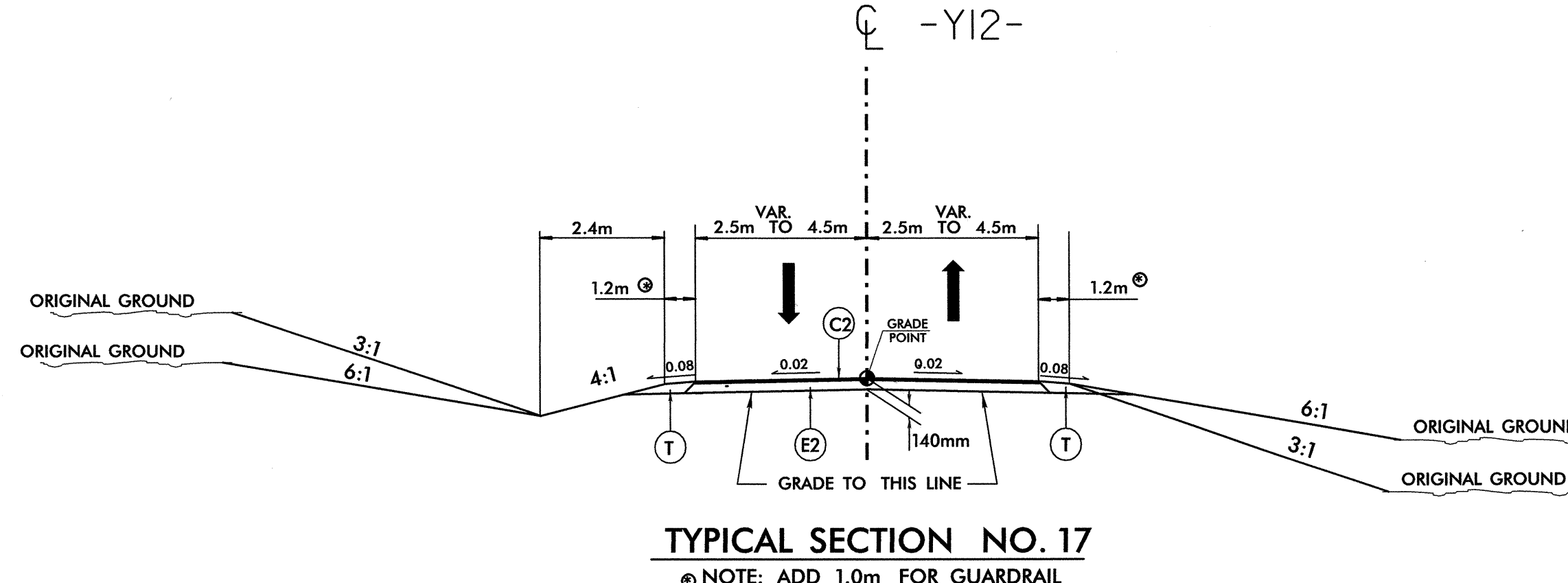
USE TYPICAL NO. 15 FOR THE FOLLOWING
 -Y1- STA. 10+60.000 TO STA. 10+89.777
 -Y2- STA. 10+21.300 TO STA. 11+00.000
 -Y5- STA. 10+20.000 TO STA. 10+48.291
 -Y5A- STA. 10+19.000 TO STA. 10+80.000
 -Y8- STA. 10+20.000 TO STA. 10+43.933
 -Y8- STA. 10+84.025 TO STA. 11+60.000

NOTE: SEE PLANS FOR LOCATION OF TURN LANES



USE TYPICAL NO. 16 FOR THE FOLLOWING
 -Y6- STA. 10+19.027 TO STA. 10+30.000
 -Y6A- STA. 10+20.000 TO STA. 10+79.795
 -Y7- STA. 10+19.000 TO STA. 10+60.000
 -Y9- STA. 10+00.000 TO STA. 10+29.254
 -Y10- STA. 10+00.000 TO STA. 10+39.066
 -Y10A- STA. 10+21.897 TO STA. 10+50.000
 -Y11- STA. 10+00.000 TO STA. 10+40.963
 -Y13- STA. 10+22.332 TO STA. 10+60.000

NOTE: SEE PLANS FOR LOCATION OF TURN LANES



USE TYPICAL NO. 17 FOR THE FOLLOWING
 -Y12- STA. 10+19.000 TO STA. 10+34.874

AUG-2004 10:51 C:\WORK\PROJECTS\2562D_RDY_TYP.DGN