

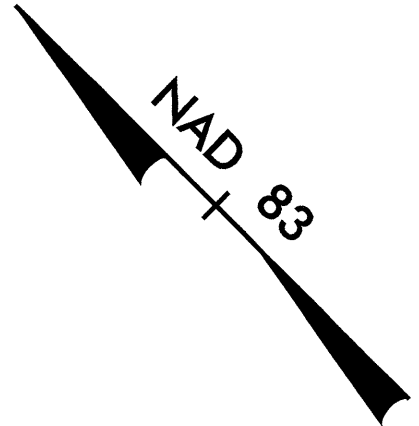
**DATUM DESCRIPTION**

THE LOCALIZED COORDINATE SYSTEM DEVELOPED FOR THIS PROJECT IS BASED ON THE STATE PLANE COORDINATES ESTABLISHED BY NCGS FOR MONUMENT "CECIL" WITH NAD 83 STATE PLANE GRID COORDINATES OF NORTHING: 102527.1910M EASTING: 635512.52300M

THE AVERAGE COMBINED GRID FACTOR USED ON THIS PROJECT (GROUND TO GRID) IS: 999920683

THE N.C. LAMBERT GRID BEARING LOCALIZED HORIZONTAL DISTANCE FROM "CECIL TO -LREV- STATION 10+53.018 IS S 44 18 54.13 E 558.5845m

ALL LINEAR DIMENSIONS ARE LOCALIZED HORIZONTAL DISTANCES VERTICAL DATUM USED IS NGVD 29



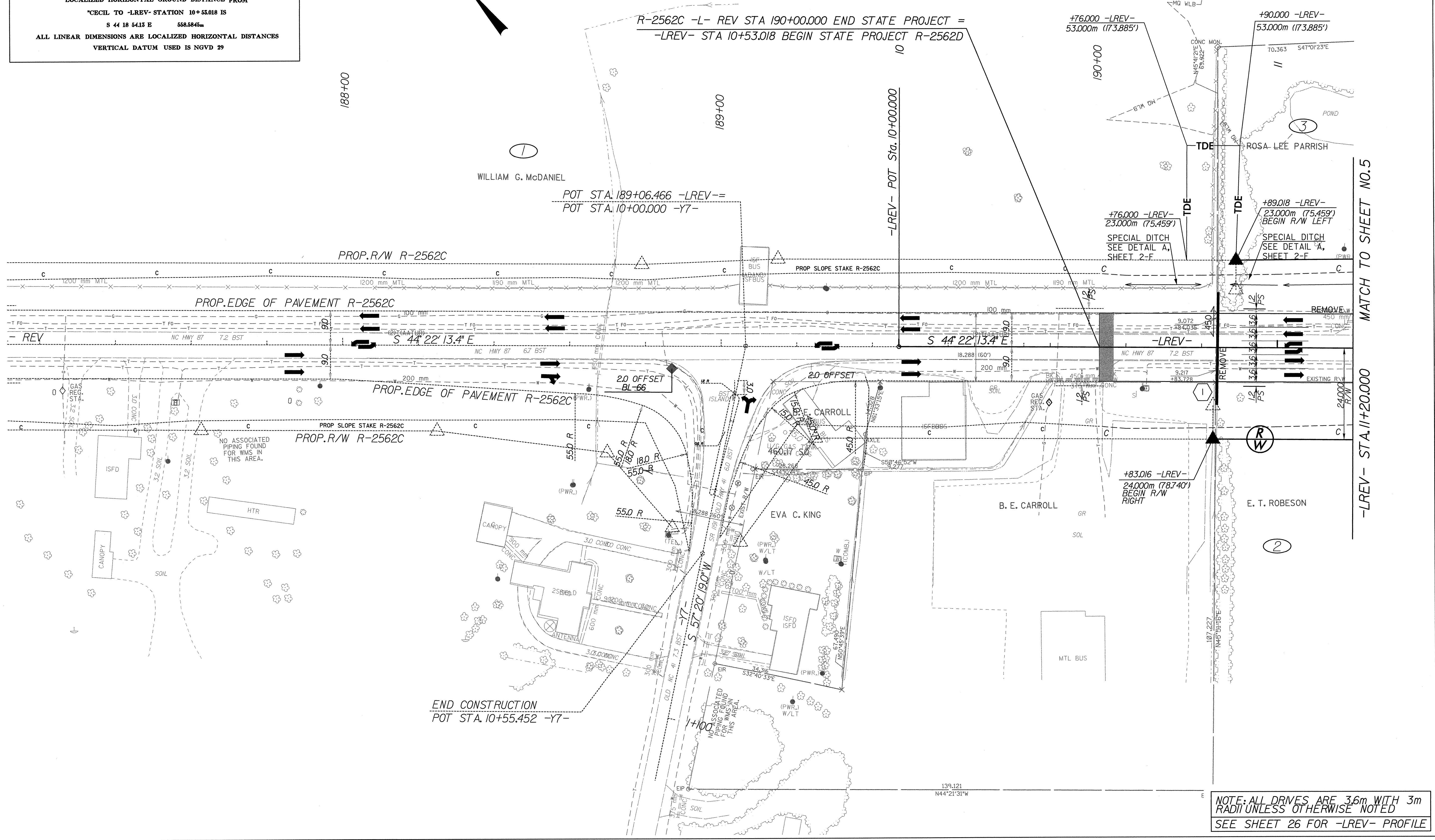
**KCI Associates of North Carolina, P.A.**  
 SUITE 200, LANDMARK CENTER 1, 4601 SIX FORKS RD.  
 RALEIGH, NC 27609-5210 (919) 783-9214  
 ENGINEERS • PLANNERS • ECOLOGISTS

**WETHERILL ENGINEERING**  
 TRANSPORTATION PLANNING/DESIGN - BRIDGE/STRUCTURE DESIGN  
 CIVIL/SITE DESIGN - GIS/GPS - CONSTRUCTION OBSERVATION

**METRIC**

CONST. REV.  
R/W REV.

PROJECT REFERENCE NO. R-2562D	SHEET NO. 4
R/W SHEET NO.	
ROADWAY DESIGN ENGINEER <i>[Signature]</i>	HYDRAULICS ENGINEER <i>[Signature]</i>
SEAL 2011 10/12/01	SEAL 2669 10/12/01



MATCH TO SHEET NO. 5  
-LREV- STA. 11+20.000

NOTE: ALL DRIVES ARE 3.6m WITH 3m RADIUS UNLESS OTHERWISE NOTED  
SEE SHEET 26 FOR -LREV- PROFILE

5/10/2011  
KCI Associates of North Carolina, P.A.  
WETHERILL ENGINEERING  
R-2562D.RDY\_PSH\_04.DGN