

METRIC

5 0 10

CONST. REV.
R / W REV.

PROJECT REFERENCE NO. R-2562D
SHEET NO. 7
R / W SHEET NO.

ROADWAY DESIGN ENGINEER
HYDRAULICS ENGINEER

SEAL 2/16/10
ENGINEER BOB L. WAY

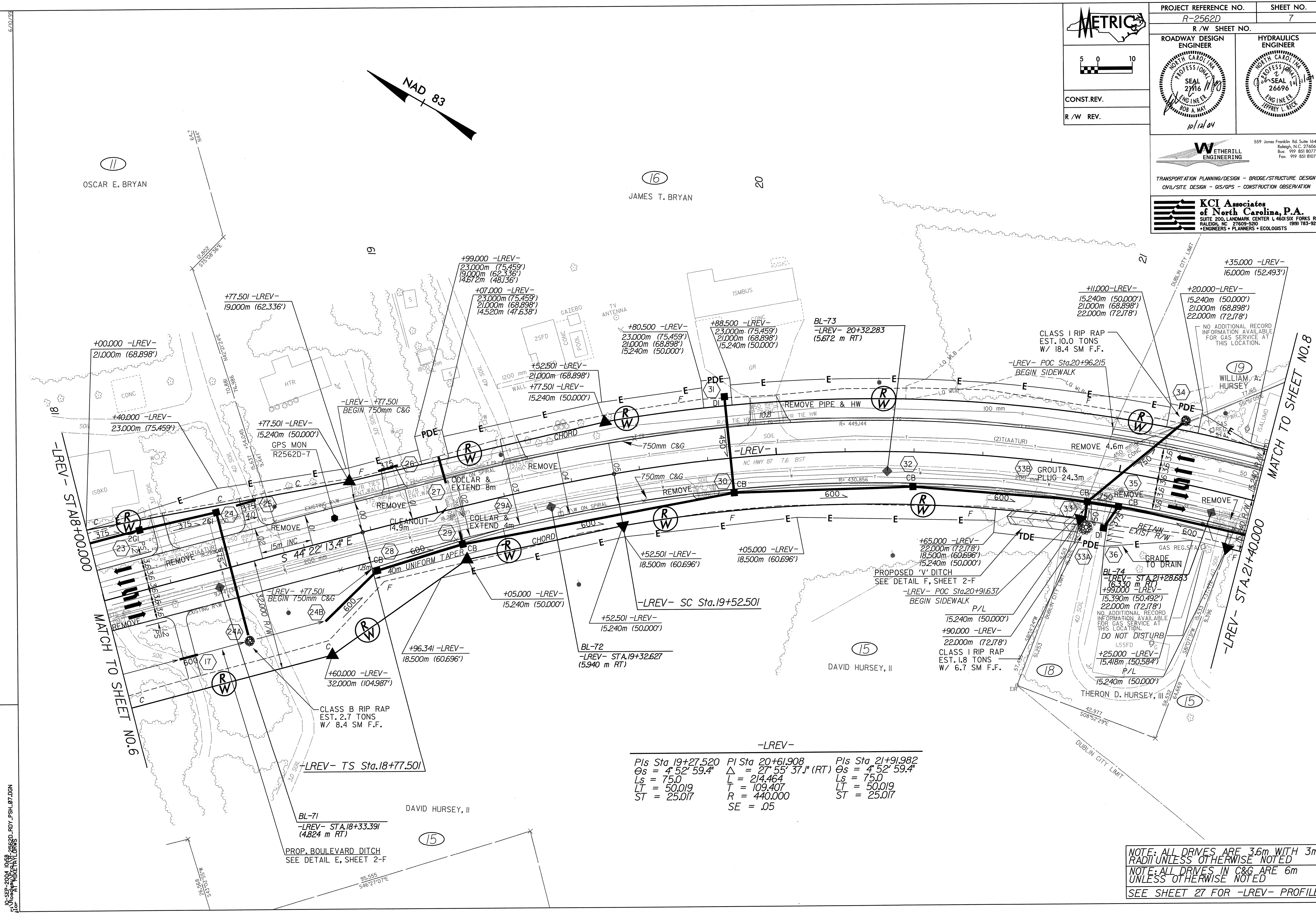
SEAL 2/14/11
ENGINEER JEFFREY L. RECK

10/12/04

ETHERILL ENGINEERING
559 Jones Franklin Rd. Suite 164
Raleigh, N.C. 27606
Bus: 919 851 8077
Fax: 919 851 8077

TRANSPORTATION PLANNING/DESIGN - BRIDGE/STRUCTURE DESIGN
CIVIL/SITE DESIGN - GIS/GPS - CONSTRUCTION OBSERVATION

KCI Associates of North Carolina, P.A.
SUITE 200, LANDMARK CENTER 1, 460 SM. FORKS RD.
RALEIGH, NC 27609-5900 (919) 783-9244
ENGINEERS • PLANNERS • ECOLOGISTS



-LREV-

PIs Sta 19+27.520	PI Sta 20+61.908	PIs Sta 21+91.982
$\theta_s = 4^\circ 52' 59.4''$	$\Delta = 27^\circ 55' 37.1''$ (RT)	$\theta_s = 4^\circ 52' 59.4''$
$L_s = 75.0$	$L = 214.464$	$L_s = 75.0$
$LT = 50.019$	$T = 109.407$	$LT = 50.019$
$ST = 25.017$	$R = 440.000$	$ST = 25.017$
	$SE = .05$	

NOTE: ALL DRIVES ARE 3.6m WITH 3m RADIUS UNLESS OTHERWISE NOTED
 NOTE: ALL DRIVES IN C&G ARE 6m UNLESS OTHERWISE NOTED
 SEE SHEET 27 FOR -LREV- PROFILE

6/10/2008
 10:56:20 AM
 R-2562D - ROY.PSH.07.DGN
 Metric