

5623 9500	5385 9100
258 500	50 100
108 500	277 600
2004 ADT	-Y12-
2025 ADT	

METRIC

PROJECT REFERENCE NO. R-2562D
R/W SHEET NO. 13

ROADWAY DESIGN ENGINEER
HYDRAULICS ENGINEER

CONST. REV.
R/W REV.

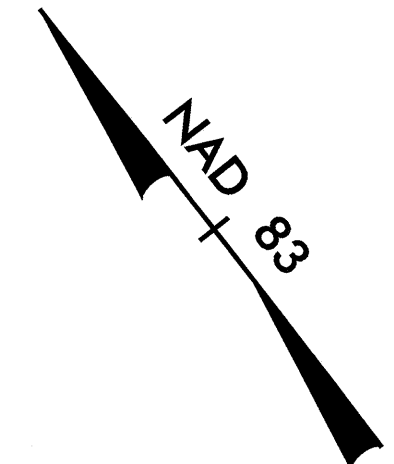
10/12/04

559 Jones Franklin Rd. Suite 164
Raleigh, N.C. 27604
Bus: 919 851 8077
Fax: 919 851 8107

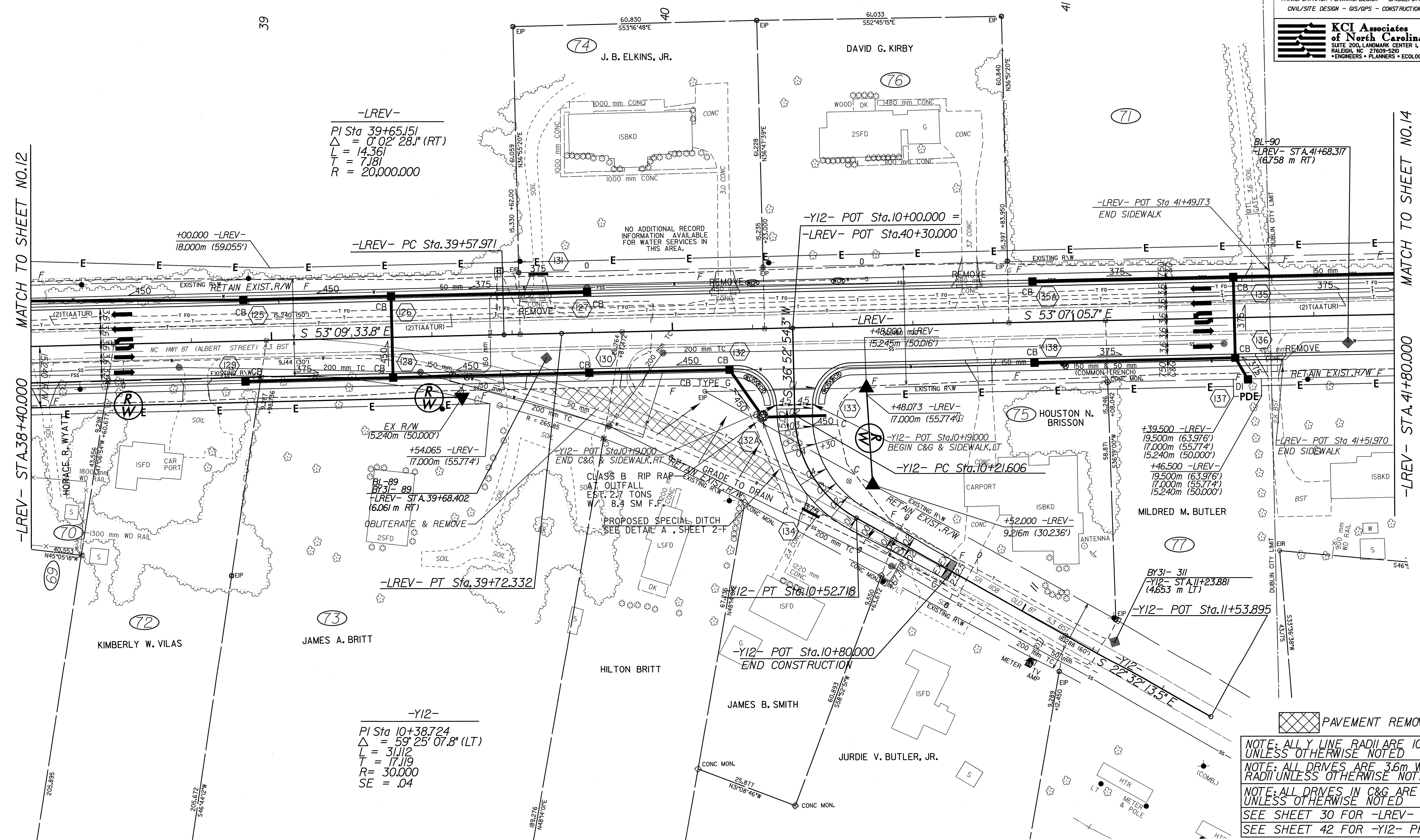
WETHERILL ENGINEERING

TRANSPORTATION PLANNING/DESIGN - BRIDGE/STRUCTURE DESIGN
CIVIL/SITE DESIGN - GIS/GPS - CONSTRUCTION OBSERVATION

KCI Associates of North Carolina, P.A.
SUITE 200, LANDMARK CENTER I, 4601 SIX FORKS RD.
RALEIGH, NC 27609-5200
• ENGINEERS • PLANNERS • ECOLOGISTS



FLORA T. TOWNSEND, HEIRS



-LREV-
PI Sta 39+65.151
 $\Delta = 0^{\circ} 02' 28.1''$ (RT)
L = 14.361
T = 7.181
R = 20,000.000

+00.000 -LREV-
18.000m (59.055')

-LREV- PC Sta.39+57.971

-Y12- POT Sta.10+00.000 =
-LREV- POT Sta.40+30.000

-LREV- POT Sta.41+49.173
END SIDEWALK

BL-90
-LREV- STA.41+68.317
(4.758 m RT)

MATCH TO SHEET NO.12
-LREV- STA.38+40.000

MATCH TO SHEET NO.14
-LREV- STA.41+80.000

-LREV- PT Sta.39+72.332

-Y12-
PI Sta 10+38.724
 $\Delta = 59^{\circ} 25' 07.8''$ (LT)
L = 31.112
T = 17.119
R = 30.000
SE = .04

PAVEMENT REMOVAL

NOTE: ALL Y LINE RADII ARE 10m UNLESS OTHERWISE NOTED

NOTE: ALL DRIVES ARE 3.6m WITH 3m RADII UNLESS OTHERWISE NOTED

NOTE: ALL DRIVES IN C&G ARE 6m UNLESS OTHERWISE NOTED

SEE SHEET 30 FOR -LREV- PROFILE

SEE SHEET 42 FOR -Y12- PROFILE

6/10/04
R:\AP\2562D\Roadway\2562D-RD-Y12-PSH.13.DGN
14:00
AT: ERIN.H2