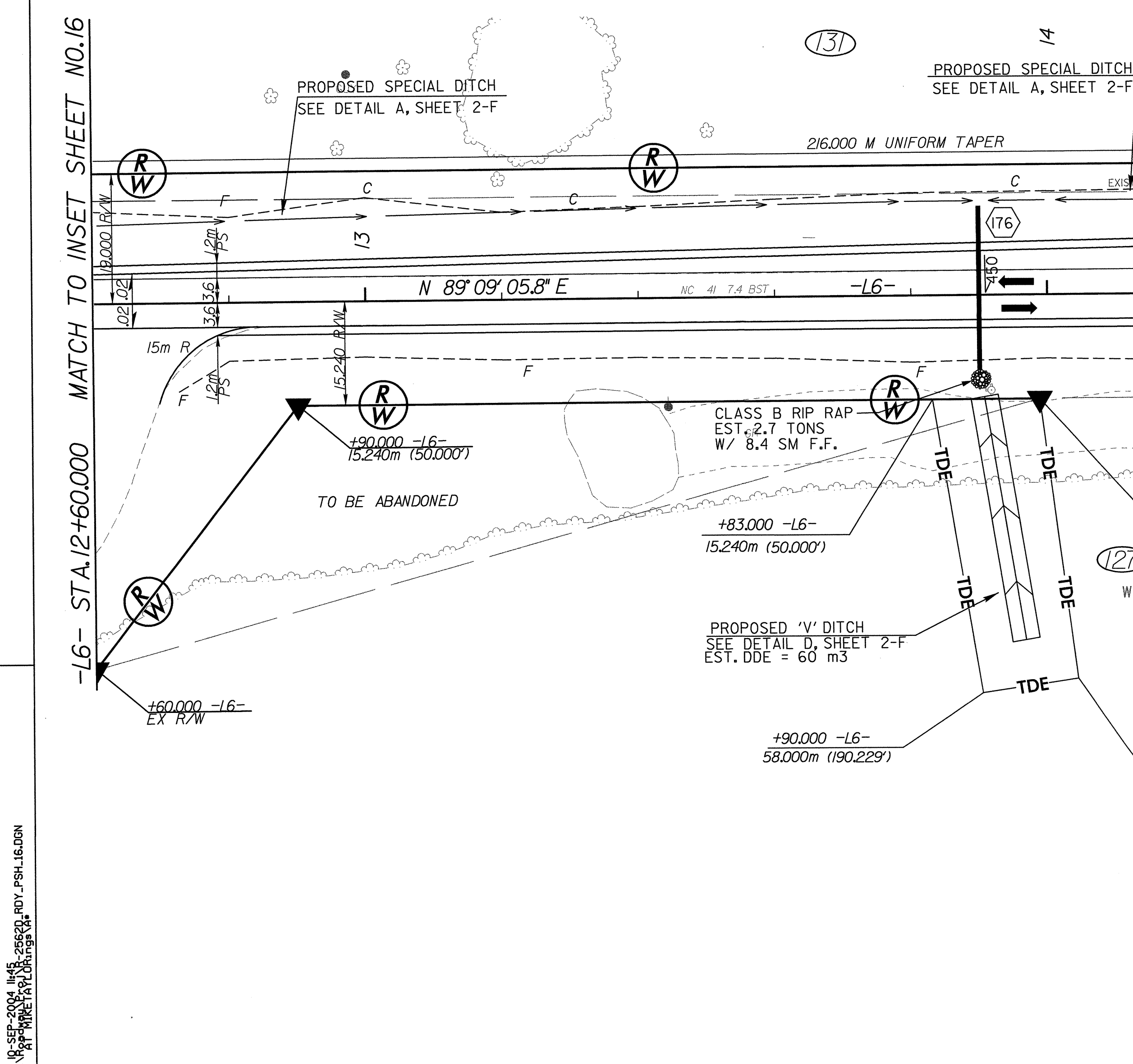
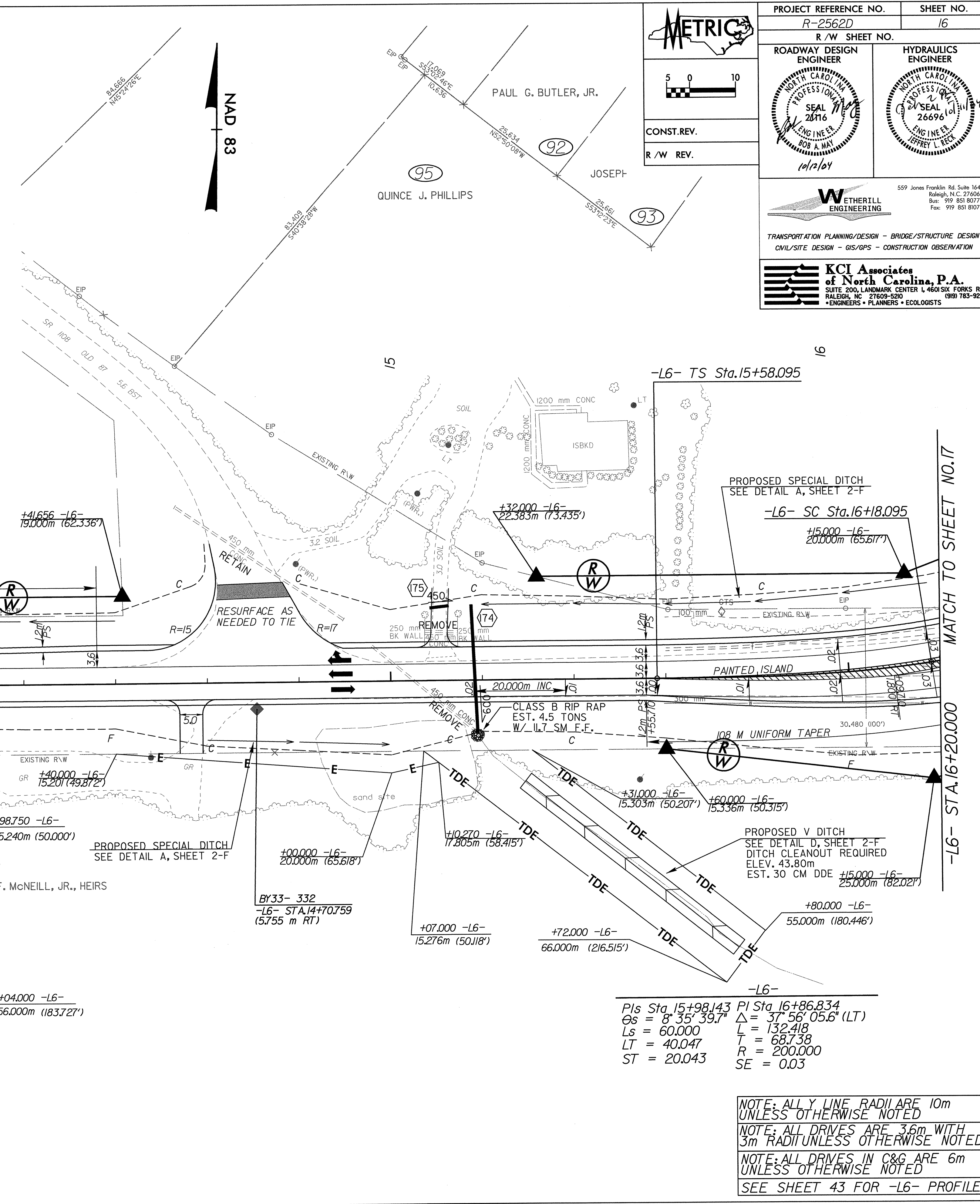
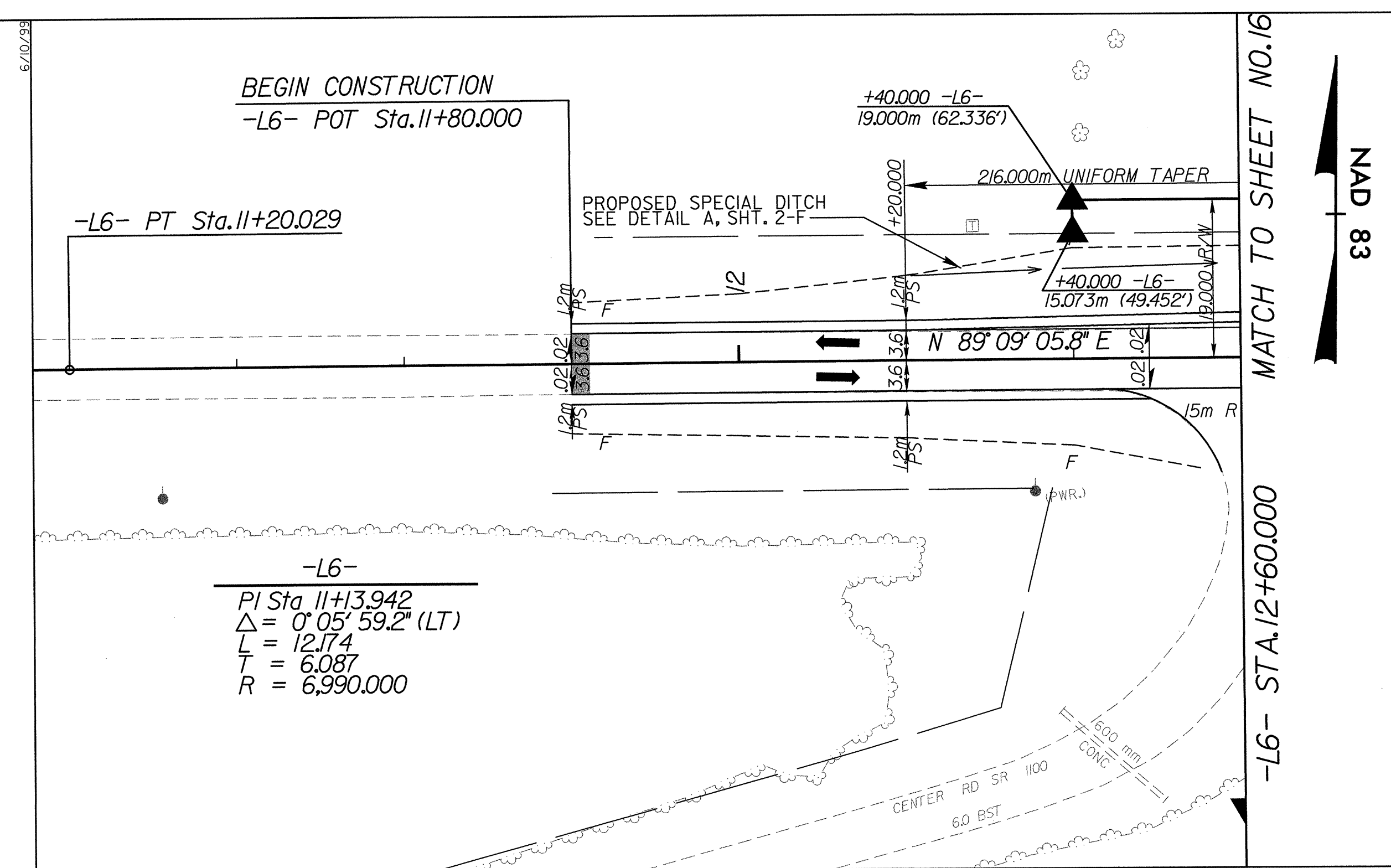


PROJECT REFERENCE NO. R-2562D		SHEET NO. 16	
R/W SHEET NO.			
ROADWAY DESIGN ENGINEER METRIC ENGINEERING BOB A. MAY 26116 10/12/04		HYDRAULICS ENGINEER METRIC ENGINEERING JEFFREY L. KECK 26696 10/12/04	
CONST. REV.		R/W REV.	
TRANSPORTATION PLANNING/DESIGN - BRIDGE/STRUCTURE DESIGN CIVIL/SITE DESIGN - GIS/GPS - CONSTRUCTION OBSERVATION			
KCI Associates of North Carolina, P.A. SUITE 200, LANDMARK CENTER I, 460 SIX FORKS RD. RALEIGH, NC 27609-5300 (919) 783-9244 ENGINEERS • PLANNERS • ECOLOGISTS			



PIs Sta. 15+98.143 PI Sta. 16+86.834  
 $\Delta_s = 8^\circ 35' 39.7''$   $\Delta = 37^\circ 56' 05.6''$  (LT)  
 $L_s = 60.000$   $L = 132.418$   
 $LT = 40.047$   $T = 68.738$   
 $ST = 20.043$   $R = 200.000$   
 $SE = 0.03$

NOTE: ALL Y LINE RADII ARE 10m UNLESS OTHERWISE NOTED  
 NOTE: ALL DRIVES ARE 3.6m WITH 3m RADII UNLESS OTHERWISE NOTED  
 NOTE: ALL DRIVES IN C&G ARE 6m UNLESS OTHERWISE NOTED  
 SEE SHEET 43 FOR -L6- PROFILE

10-SEP-2004 14:45  
 R:\Projects\2562D\RDY\_PSH\_16.DGN  
 R:\Projects\2562D\RDY\_PSH\_16.DGN