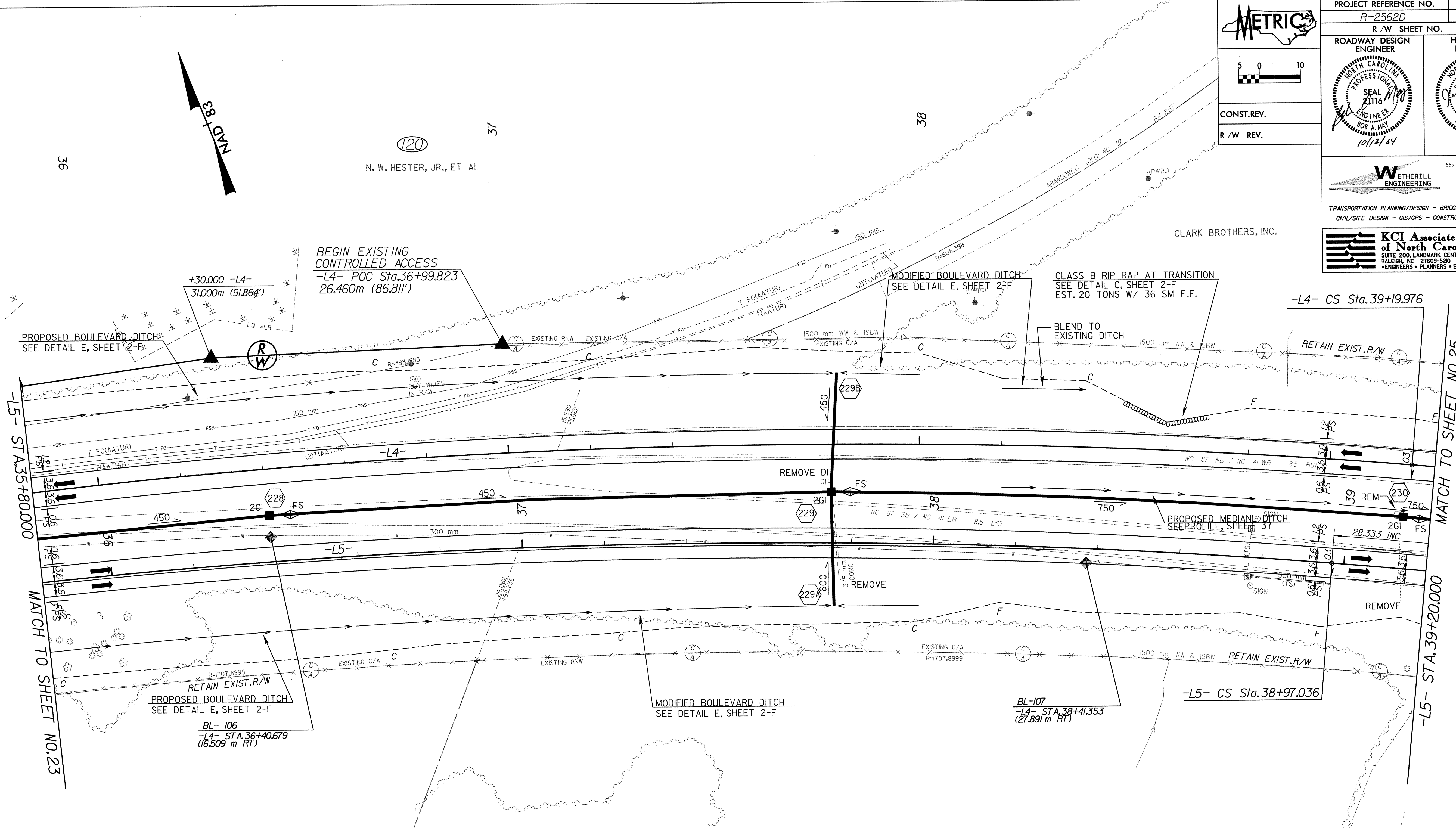


METRIC

CONST. REV.
R/W REV.

PROJECT REFERENCE NO. R-2562D	SHEET NO. 24
R/W SHEET NO.	
ROADWAY DESIGN ENGINEER PROFESSIONAL SEAL 2116 ENGINEER BOB A. MAY 10/12/84	HYDRAULICS ENGINEER PROFESSIONAL SEAL 26696 ENGINEER JEFFREY L. REY
<p>559 Jones Franklin Rd. Suite 164 Raleigh, N.C. 27606 Bus: 919 851 8077 Fax: 919 851 8107</p>	
<p>TRANSPORTATION PLANNING/DESIGN - BRIDGE/STRUCTURE DESIGN CIVIL/SITE DESIGN - GIS/GPS - CONSTRUCTION OBSERVATION</p>	
<p>KCI Associates of North Carolina, P.A. SUITE 200, LANDMARK CENTER I, 4601 SIX FORKS RD. RALEIGH, NC 27609-5200 ENGINEERS • PLANNERS • ECOLOGISTS</p>	



-L4-		
Pls Sta 35+40.295 Os = 1° 23' 40.8"	Pl Sta 37+44.896 Δ = 11° 31' 46.8" (RT) L = 351.349 T = 176.270 R = 1,746.000 SE = 0.03	Pls Sta 39+48.311 Os = 1° 23' 40.8"
Ls = 85.000 LT = 56.668 ST = 28.335		Ls = 85.000 LT = 56.668 ST = 28.335
-L5-		
Pls Sta 35+22.353 Os = 1° 24' 38.9"	Pl Sta 37+24.444 Δ = 11° 29' 50.5" (RT) L = 346.351 T = 173.759 R = 1,726.000 SE = 0.03	Pls Sta 39+25.371 Os = 1° 24' 38.9"
Ls = 85.000 LT = 56.668 ST = 28.335		Ls = 85.000 LT = 56.668 ST = 28.335

NOTE: ALL CURVE RADII ARE 10m UNLESS OTHERWISE NOTED
NOTE: ALL DRIVES ARE 3.6m WITH 3m RADIUS UNLESS OTHERWISE NOTED
NOTE: ALL DRIVES IN C&G ARE 6m UNLESS OTHERWISE NOTED
SEE SHEET 37 FOR -L4- PROFILE
SEE SHEET 39 FOR -L5- PROFILE

6/10/23
 08 SEP 2004 10:15 AM
 R:\2562D-ROY.PSH\24.DGN
 M:\proj\2562D-ROY.PSH\24.DGN