

6/10/09

**KCI Associates of North Carolina, P.A.**  
SUITE 200, LANDMARK CENTER II, 4601 SIX FORKS RD.,  
RALEIGH, NC 27609-5300 (919) 785-9244  
ENGINEERS • PLANNERS • ECOLOGISTS

**WETWELL ENGINEERING**  
TRANSPORTATION PLANNING/DESIGN - BRIDGE/STRUCTURE DESIGN  
CIVIL/SITE DESIGN - GIS/GPS - CONSTRUCTION OBSERVATION

BM GPS (R2562CD-9)  
-LREV- STA 35+25.233  
OFFSET 5.903 RT.  
ELEV. 44.942

PROJECT REFERENCE NO. **R-2562D** SHEET NO. **30**

ROADWAY DESIGN ENGINEER

HYDRAULICS ENGINEER

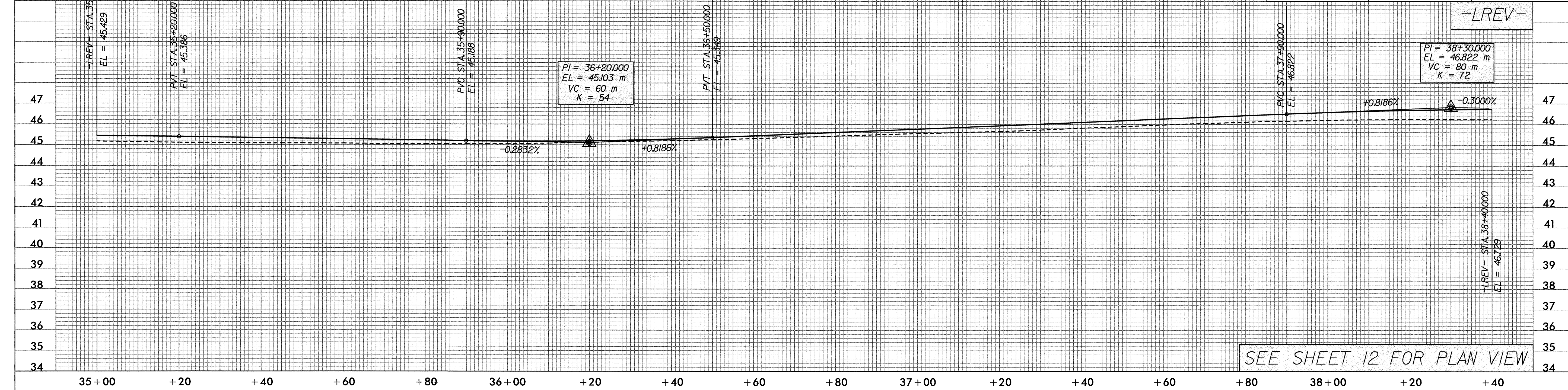
CONST. REV.

R / W REV.

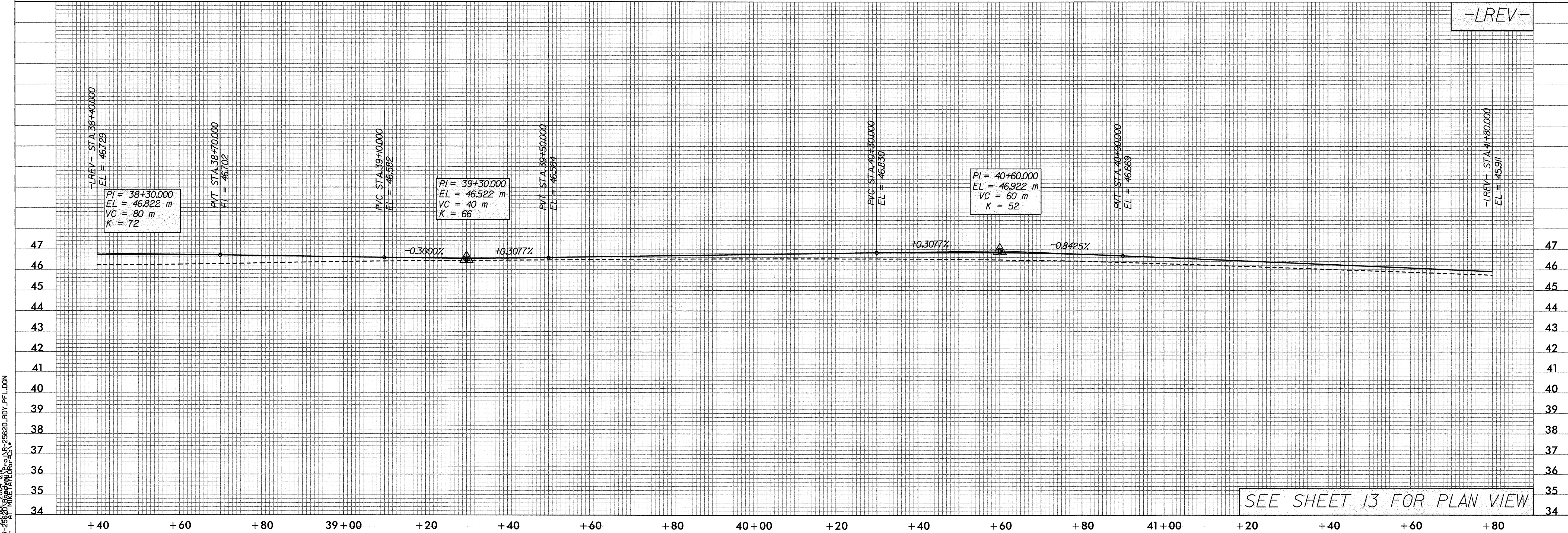
Professional Engineer Seal: NORTH CAROLINA PROFESSIONAL SEAL 21116, ENGINEER, 808 A HWY, FERRY, NC

Professional Engineer Seal: NORTH CAROLINA PROFESSIONAL SEAL 26696, ENGINEER, FERRY, NC

10/12/04



SEE SHEET 12 FOR PLAN VIEW



SEE SHEET 13 FOR PLAN VIEW

MT:ejj/cor  
11/18/2004 12:41:00 AR-2562D.RDY\_PFL.DGN