

6/09/2004

29-OCT-2004 14:58  
MT001.DWG  
C:\PROJECTS\2004\1458\ROADWAY\2004\1458\RDY\_PFL.DGN

**-L2REV-**  
 -L2REV- STA.56+12.292 LB EL = 43.825 =  
 -L3- STA.19+35.434 LA EL = 43.825 (OFF 7.0 RT) =  
 -L1REV- STA.56+21.880 LB EL = 43.825 (OFF 14.0 RT)

**KCI Associates**  
 of North Carolina, P.A.  
 SUITE 200, LANDMARK CENTER I, 4601 SIX FORKS RD.  
 RALEIGH, NC 27609-5200 (919) 183-9244  
 ENGINEERS • PLANNERS • ECOLOGISTS

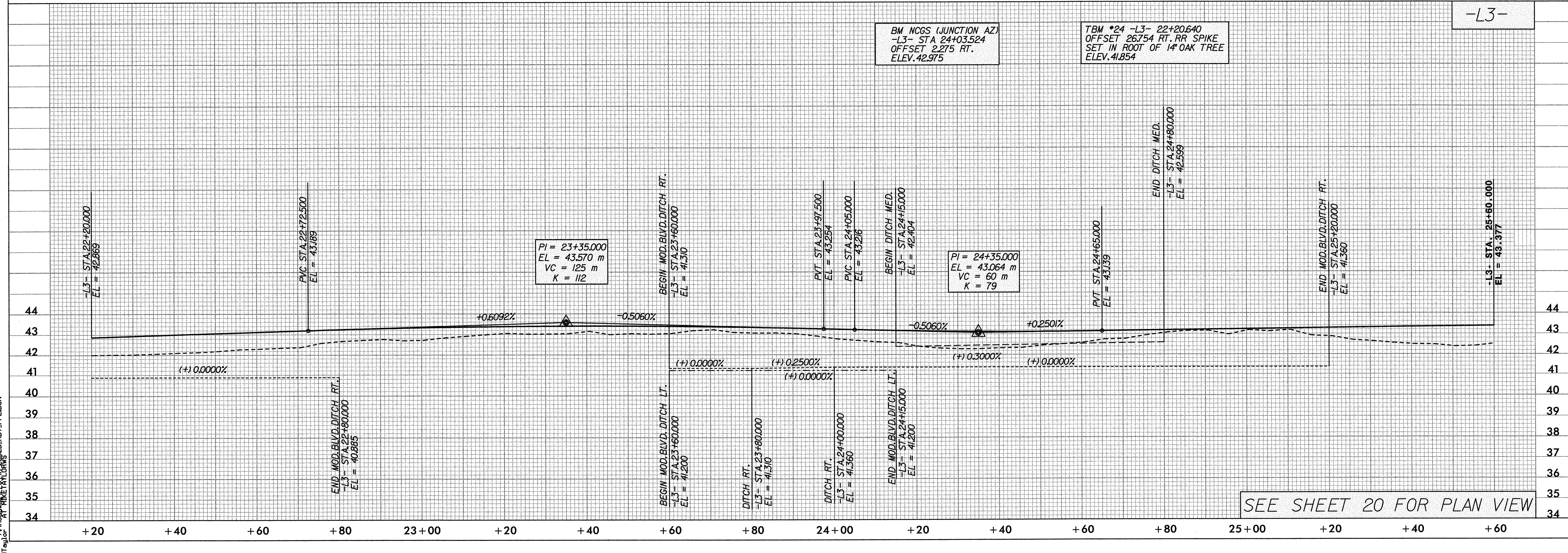
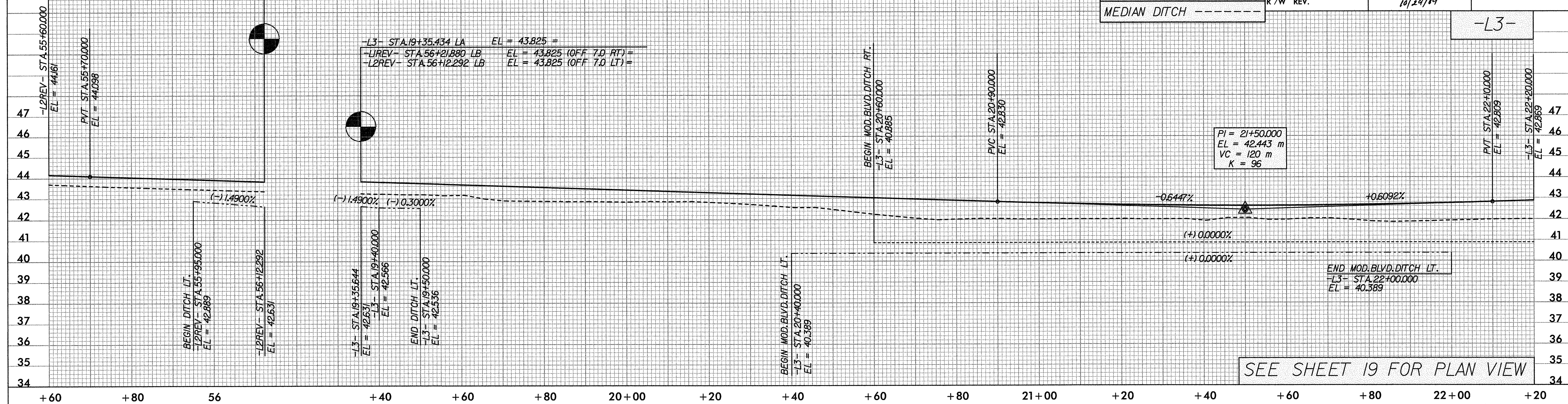
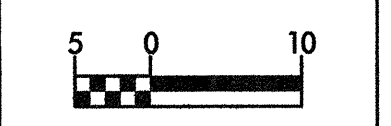
**WETHERILL ENGINEERING**  
 559 Jones Franklin Rd. Suite 164  
 Raleigh, N.C. 27604  
 Dist. 919-851-8077  
 Fax: 919-851-8107



PROJECT REFERENCE NO. <b>R-2562D</b>	SHEET NO. <b>35</b>
ROADWAY DESIGN ENGINEER	HYDRAULICS ENGINEER
CONST. REV.	
R/W REV.	
10/29/04	

**DITCH LEGEND**

LEFT DITCH	---
RIGHT DITCH	---
MEDIAN DITCH	---



BM NCGS (JUNCTION AZ)  
 -L3- STA 24+03.524  
 OFFSET 2.275 RT.  
 ELEV. 42.975

TBM \*24 -L3- 22+20.640  
 OFFSET 26.754 RT. RR SPIKE  
 SET IN ROOT OF 14" OAK TREE  
 ELEV. 41.854