

6/20/19

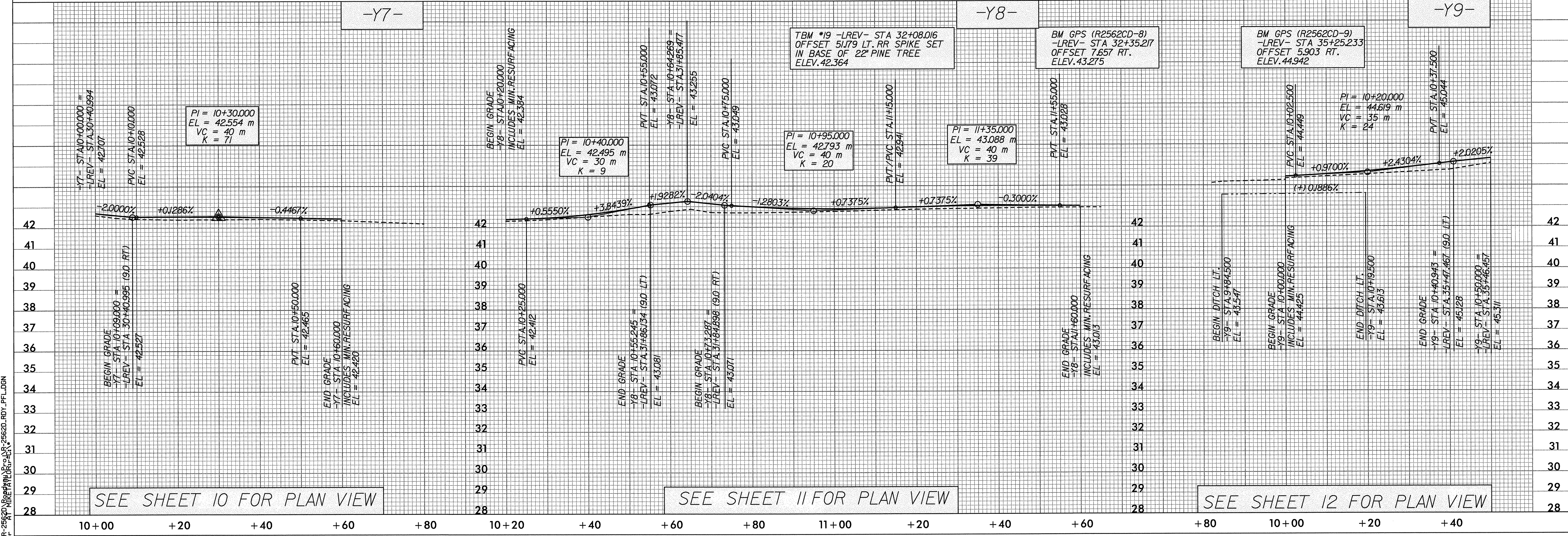
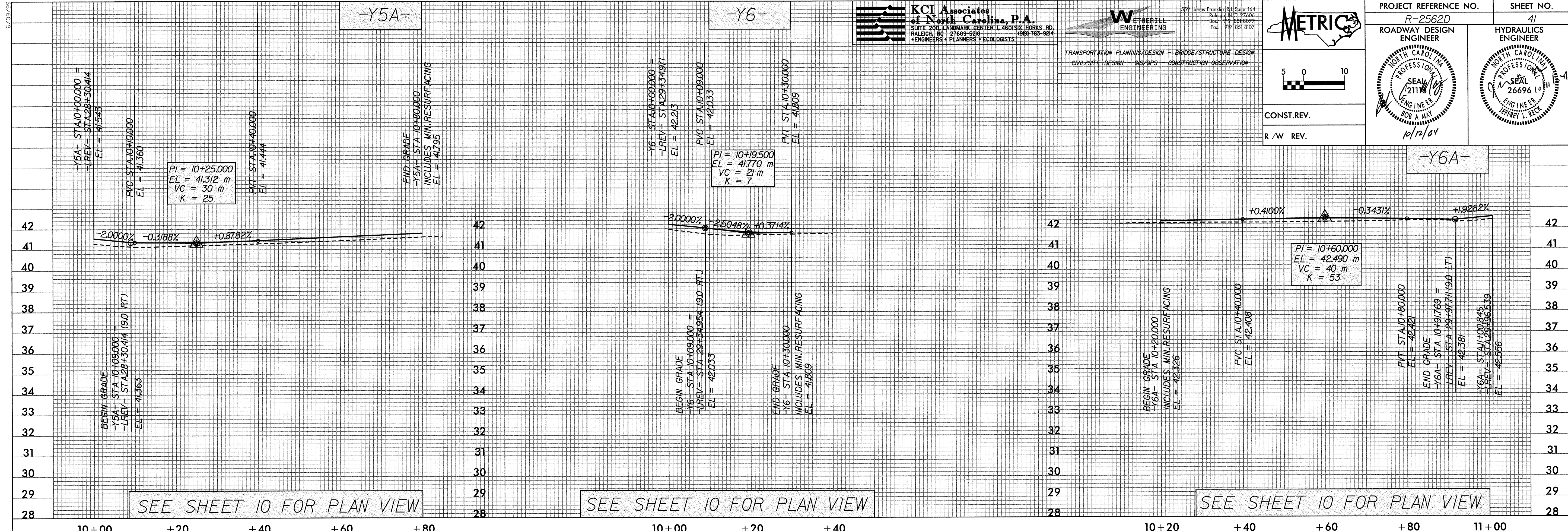
MT:\19-2562D\19-2562D\19-2562D-ROY\_PFL.DGN

**KCI Associates of North Carolina, P.A.**  
 SUITE 200, LANMARK CENTER I, 4601 SIX FORKS RD.  
 FAYETTEVILLE, NC 27609-5300 (919) 765-9244  
 ENGINEERS • PLANNERS • ECOLOGISTS

**WETHERILL ENGINEERING**  
 TRANSPORTATION PLANNING/DESIGN - BRIDGE/STRUCTURE DESIGN  
 CIVIL/SITE DESIGN - GIS/GPS - CONSTRUCTION OBSERVATION

**METRIC**  
 NORTH CAROLINA PROFESSIONAL SEAL  
 26696  
 10/12/04

PROJECT REFERENCE NO. R-2562D	SHEET NO. 41
ROADWAY DESIGN ENGINEER	HYDRAULICS ENGINEER



SEE SHEET 10 FOR PLAN VIEW

SEE SHEET 10 FOR PLAN VIEW

SEE SHEET 10 FOR PLAN VIEW

SEE SHEET 10 FOR PLAN VIEW

SEE SHEET 11 FOR PLAN VIEW

SEE SHEET 12 FOR PLAN VIEW

TBM #19 -LREV- STA 32+08.016  
OFFSET 51.79 LT. RR SPIKE SET  
IN BASE OF 22" PINE TREE  
ELEV. 42.364

BM GPS (R2562CD-8)  
-LREV- STA 32+35.217  
OFFSET 7.657 RT.  
ELEV. 43.275

BM GPS (R2562CD-9)  
-LREV- STA 35+25.233  
OFFSET 5.903 RT.  
ELEV. 44.942