

5 0 10

CONST. REV.  
R/W REV.

PROJECT REFERENCE NO. R-2562D	SHEET NO. 7
R/W SHEET NO.	
ROADWAY DESIGN ENGINEER	HYDRAULICS ENGINEER
<b>PRELIMINARY PLANS</b> DO NOT USE FOR CONSTRUCTION <b>INCOMPLETE PLANS</b> DO NOT USE FOR R/W ACQUISITION	

OSCAR E. BRYAN  
DB 385 PG 584  
DB 216 PG 356  
DB 199 PG 145  
DB 259 PG 403  
DB 259 PG 406  
MAP 12 PG 102

JAMES T. BRYAN  
DB 216 PG 355  
MAP 12 PG 102

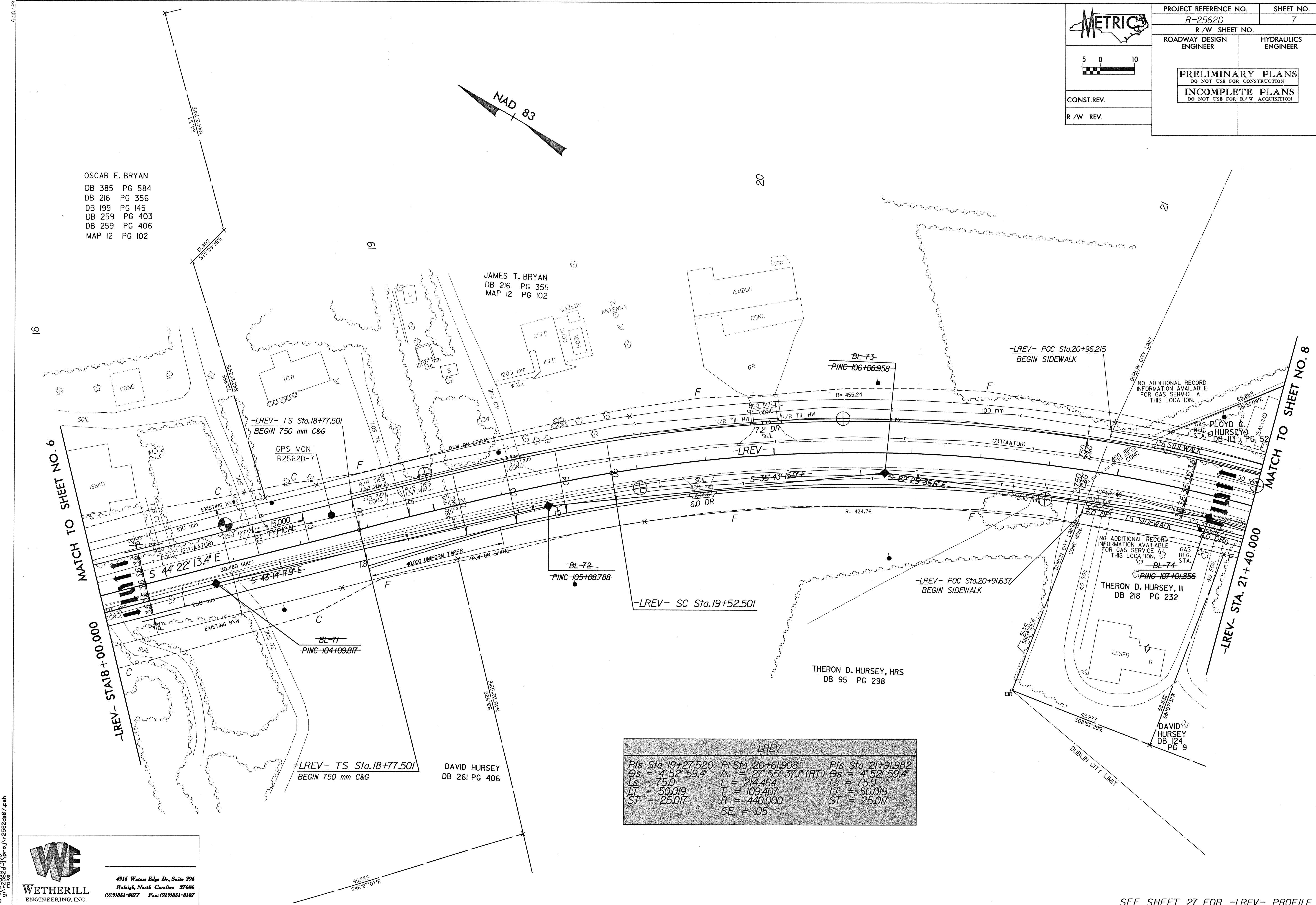
DAVID HURSEY  
DB 261 PG 406

THERON D. HURSEY, HRS  
DB 95 PG 298

THERON D. HURSEY, III  
DB 218 PG 232

DAVID HURSEY  
DB 124 PG 9

-LREV-		
PI Sta 19+27.520	PI Sta 20+61.908	PI Sta 21+91.982
$\Theta_s = 4^\circ 52' 59.4"$	$\Delta = 27^\circ 55' 37.1" (RT)$	$\Theta_s = 4^\circ 52' 59.4"$
Ls = 75.0	L = 214.464	Ls = 75.0
LT = 50.019	T = 109.407	LT = 50.019
ST = 25.017	R = 440.000	ST = 25.017
	SE = .05	



15-DEC-2002 14:13:33 p.m. J:\proj\2562d\07.dwg



4915 Waters Edge Dr., Suite 295  
Raleigh, North Carolina 27606  
(919)851-8077 Fax: (919)851-8107

SEE SHEET 27 FOR -LREV- PROFILE