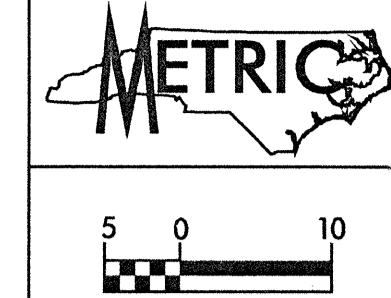
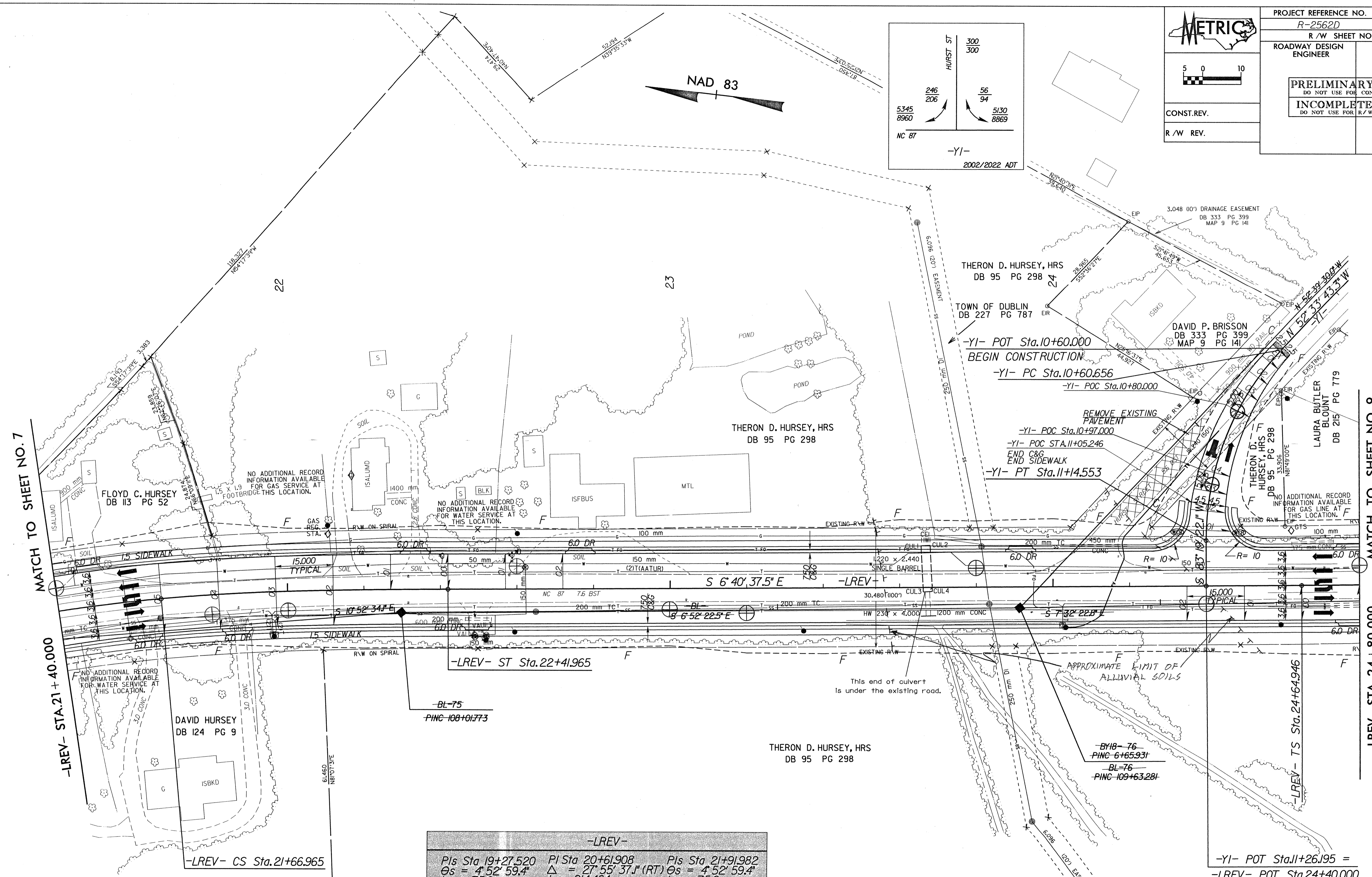
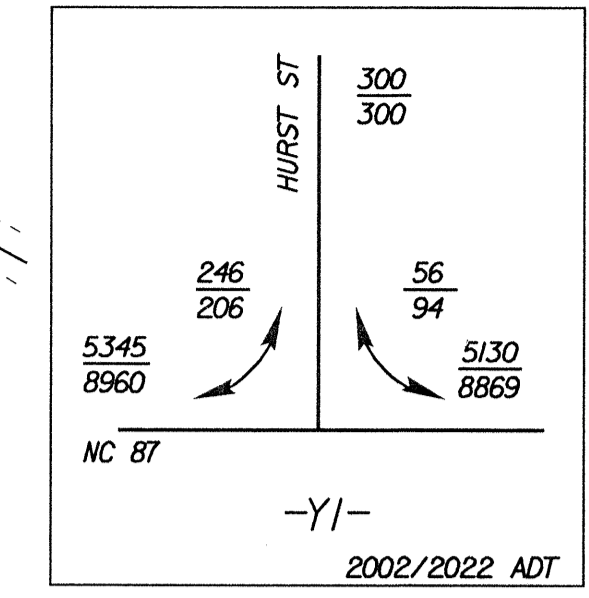


6/10/99



PROJECT REFERENCE NO. R-2562D		SHEET NO. 8	
R/W SHEET NO.			
ROADWAY DESIGN ENGINEER		HYDRAULICS ENGINEER	
PRELIMINARY PLANS DO NOT USE FOR CONSTRUCTION INCOMPLETE PLANS DO NOT USE FOR R/W ACQUISITION			
CONST. REV.			
R/W REV.			



MATCH TO SHEET NO. 7

-LREV- STA. 21 + 40.000

MATCH TO SHEET NO. 9

-LREV- STA. 24 + 80.000

-LREV-		
PIs Sta 19+27.520	PI Sta 20+61.908	PIs Sta 21+91.982
$\Theta_s = 4^\circ 52' 59.4''$	$\Delta = 27^\circ 55' 37.1''$ (RT)	$\Theta_s = 4^\circ 52' 59.4''$
$L_s = 75.0$	$L = 214.464$	$L_s = 75.0$
$LT = 50.019$	$T = 109.407$	$LT = 50.019$
$ST = 25.017$	$R = 440.000$	$ST = 25.017$
	$SE = .05$	

PIs Sta 25+04.971	PI Sta 26+08.758	PIs Sta 27+07.673	-YI-
$\Theta_s = 6^\circ 15' 01.6''$	$\Delta = 33^\circ 53' 57.0''$ (LT)	$\Theta_s = 6^\circ 15' 01.6''$	PI Sta 10+89.020
$L_s = 60.0$	$L = 162.704$	$L_s = 60.0$	$\Delta = 44^\circ 06' 54.5''$ (LT)
$LT = 40.025$	$T = 83.811$	$LT = 40.025$	$L = 53.897$
$ST = 20.023$	$R = 275.000$	$ST = 20.023$	$T = 28.364$
	$SE = .04$		$R = 70.000$
			$SE = .04$

4915 Waters Edge Dr., Suite 295
Raleigh, North Carolina 27606
919/851-8077 Fax 919/851-8107

SEE SHEET 28 FOR -LREV- PROFILE
SEE SHEET 42 FOR -YI- PROFILE