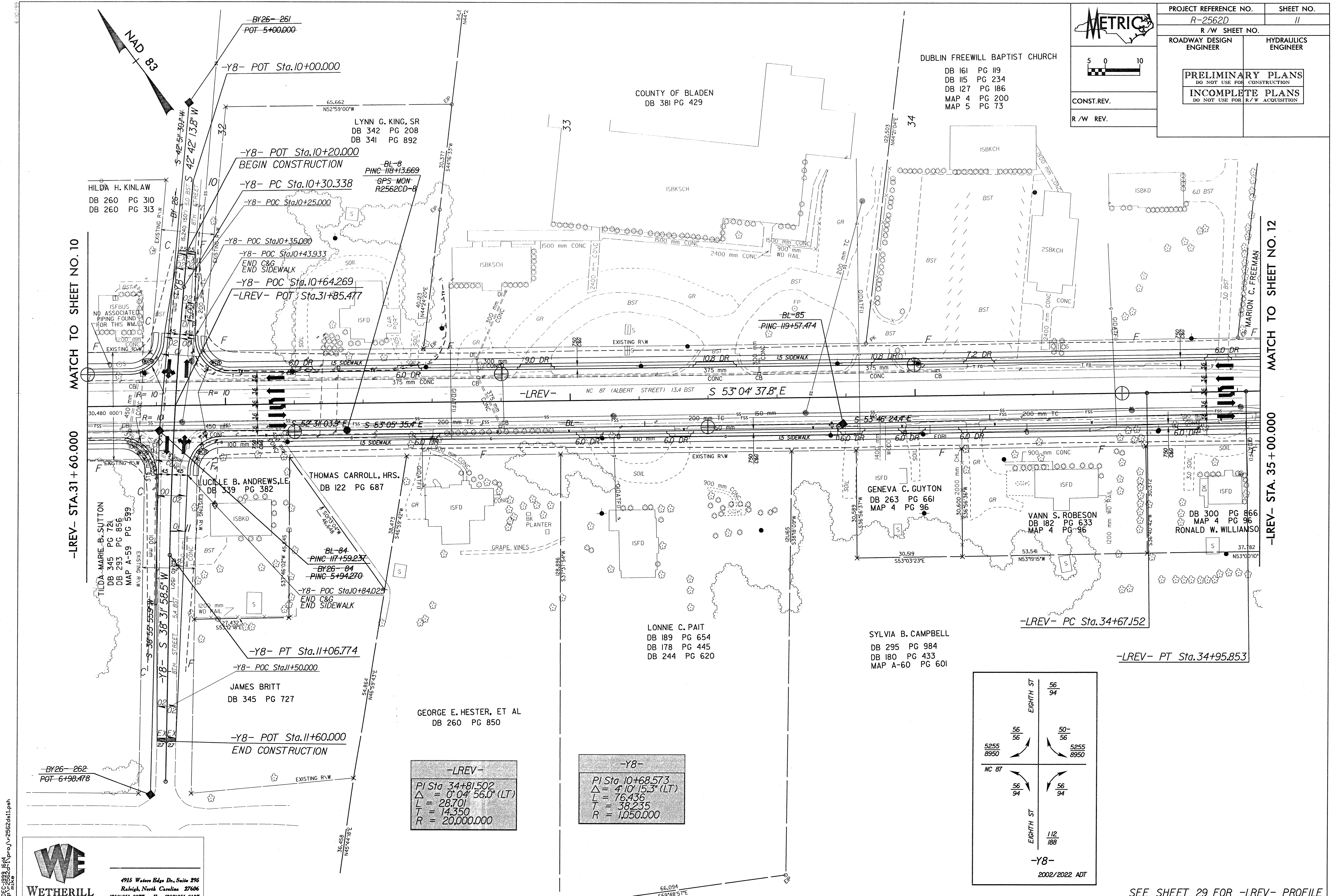


5 0 10

CONST. REV.

R/W REV.

|  |                     |
|--|---------------------|
| PROJECT REFERENCE NO.<br>R-2562D   | SHEET NO.<br>11     |
| R/W SHEET NO.  |                     |
| ROADWAY DESIGN ENGINEER  | HYDRAULICS ENGINEER |
| <b>PRELIMINARY PLANS</b><br>DO NOT USE FOR CONSTRUCTION<br><b>INCOMPLETE PLANS</b><br>DO NOT USE FOR R/W ACQUISITION |                     |



MATCH TO SHEET NO. 10

-LREV- STA. 31+60.000

MATCH TO SHEET NO. 12

-LREV- STA. 35+00.000

15-DEC-1999 J614  
911-2562-11 ProJ-2562ds11.pdw  
micg



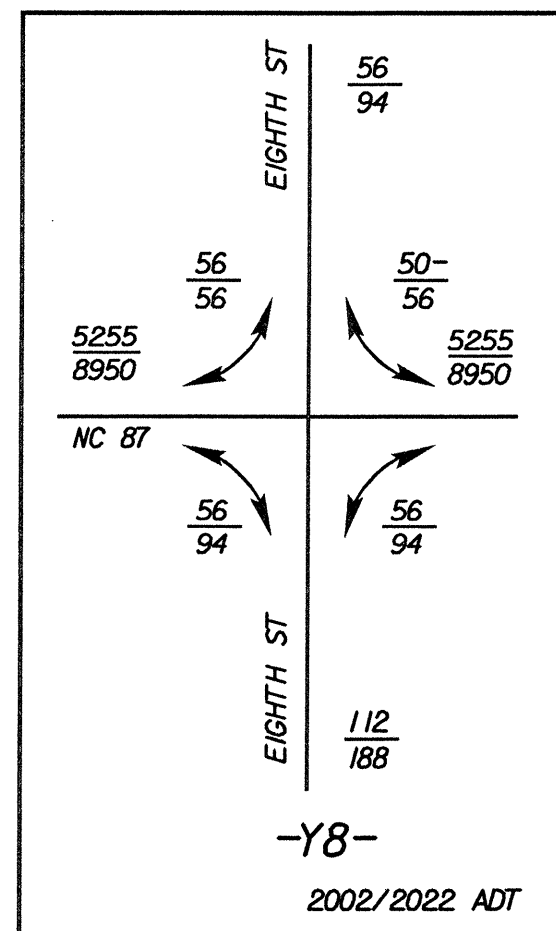
4915 Waters Edge Dr., Suite 295  
Raleigh, North Carolina 27606  
(919)851-8077 Fax: (919)851-8107

-LREV-

PI Sta 34+81.502  
Δ = 0° 04' 56.0" (LT)  
L = 28.701  
T = 14.350  
R = 20,000.000

-Y8-

PI Sta 10+68.573  
Δ = 4° 10' 15.3" (LT)  
L = 76.436  
T = 38.235  
R = 1,050.000



SEE SHEET 29 FOR -LREV- PROFILE  
SEE SHEET 44 FOR -Y8- PROFILE