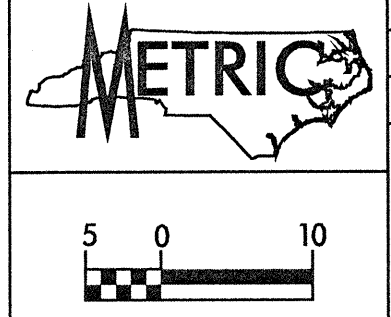
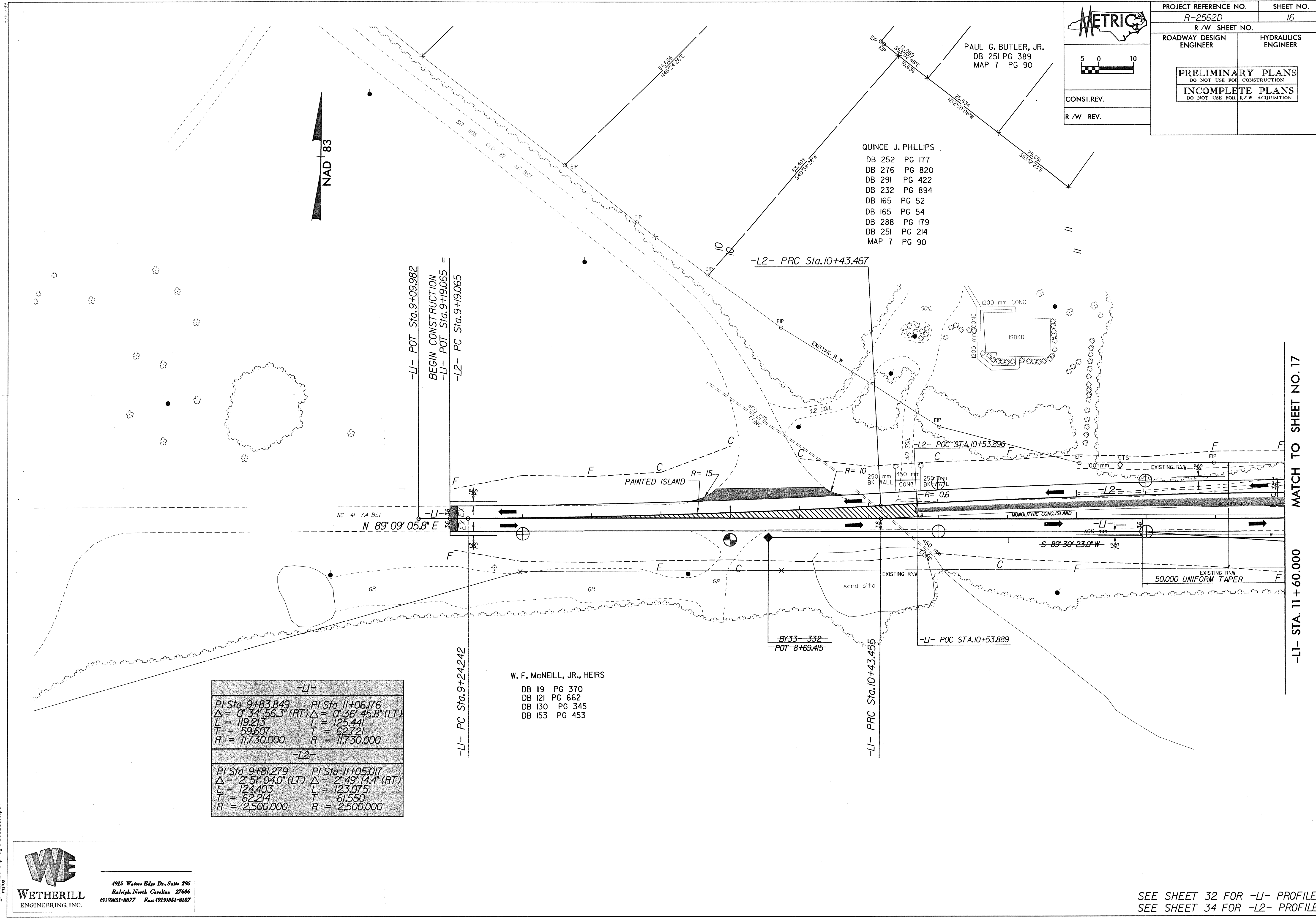


PROJECT REFERENCE NO. R-2562D		SHEET NO. 16
R/W SHEET NO.		
ROADWAY DESIGN ENGINEER	HYDRAULICS ENGINEER	
PRELIMINARY PLANS DO NOT USE FOR CONSTRUCTION INCOMPLETE PLANS DO NOT USE FOR R/W ACQUISITION		
CONST.REV.		
R/W REV.		



PAUL G. BUTLER, JR.
DB 251 PG 389
MAP 7 PG 90

QUINCE J. PHILLIPS
DB 252 PG 177
DB 276 PG 820
DB 291 PG 422
DB 232 PG 894
DB 165 PG 52
DB 165 PG 54
DB 288 PG 179
DB 251 PG 214
MAP 7 PG 90



NAD 83

-L1- POT Sta. 9+09.982
BEGIN CONSTRUCTION
-L1- POT Sta. 9+19.065
-L2- PC Sta. 9+19.065

-L2- PRC Sta. 10+43.467

-L2- POC STA. 10+53.896

-L1- POC STA. 10+53.889

BY 33-332
POT 8+69.415

W. F. McNEILL, JR., HEIRS
DB 119 PG 370
DB 121 PG 662
DB 130 PG 345
DB 153 PG 453

-L1-	
PI Sta. 9+83.849	PI Sta. 11+06.176
$\Delta = 0^\circ 34' 56.3''$ (RT)	$\Delta = 0^\circ 36' 45.8''$ (LT)
L = 119.213	L = 125.441
T = 59.607	T = 62.721
R = 11,730.000	R = 11,730.000
-L2-	
PI Sta. 9+81.279	PI Sta. 11+05.017
$\Delta = 2^\circ 51' 04.0''$ (LT)	$\Delta = 2^\circ 49' 14.4''$ (RT)
L = 124.403	L = 123.075
T = 62.214	T = 61.550
R = 2,500.000	R = 2,500.000

4915 Waters Edge Dr., Suite 295
Raleigh, North Carolina 27606
(919) 851-8077 Fax: (919) 851-8107

SEE SHEET 32 FOR -L1- PROFILE
SEE SHEET 34 FOR -L2- PROFILE

15-DEC-1999 14:55 gr:mike 15-DEC-1999 14:55 gr:mike 15-DEC-1999 14:55 gr:mike

MATCH TO SHEET NO. 17
-L1- STA. 11 + 60.000