

METRIC

PROJECT REFERENCE NO. R2562D SHEET NO. 21

R / W SHEET NO.

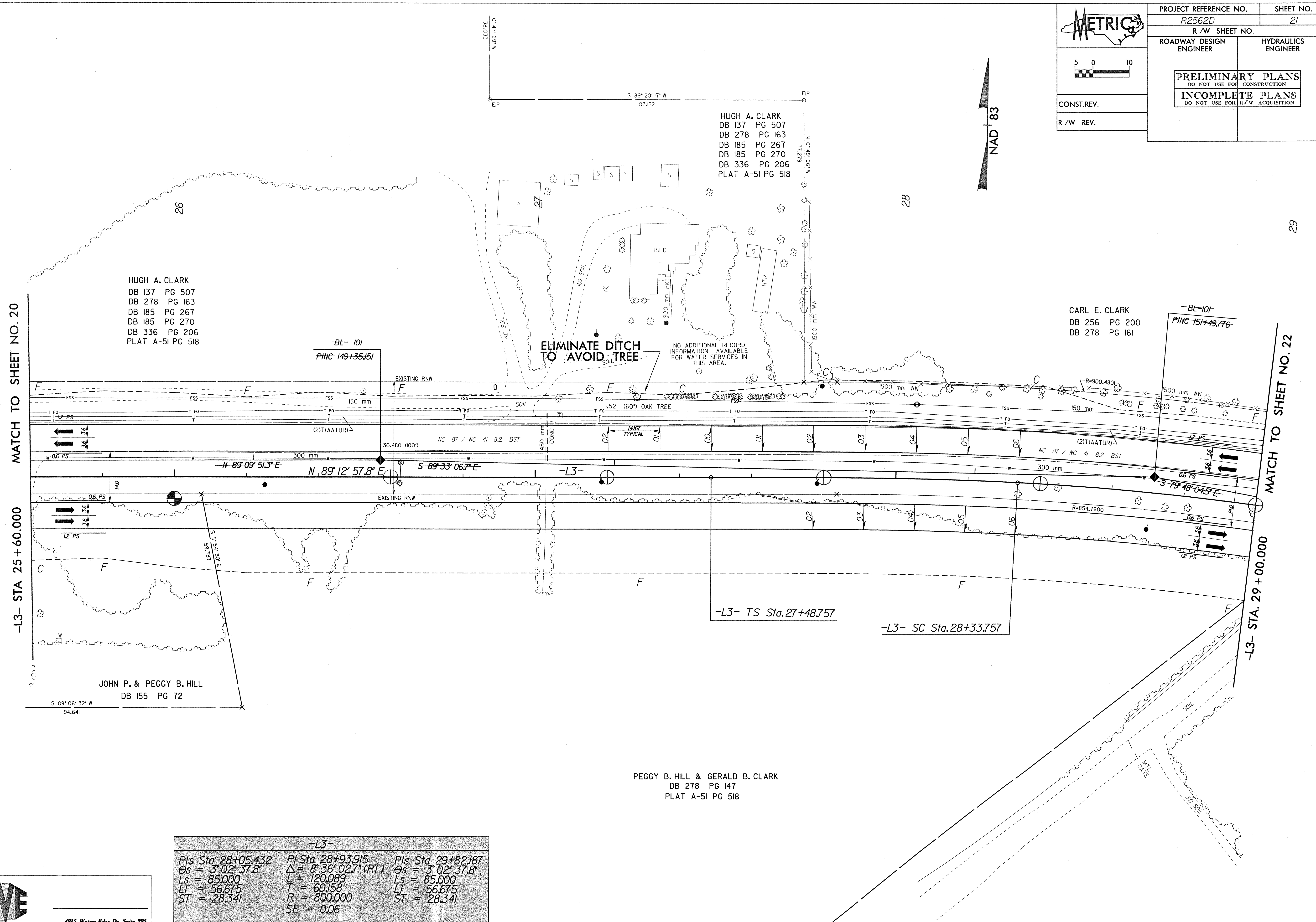
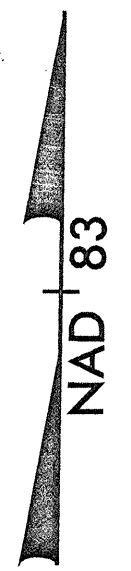
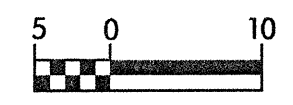
ROADWAY DESIGN ENGINEER HYDRAULICS ENGINEER

PRELIMINARY PLANS
DO NOT USE FOR CONSTRUCTION

INCOMPLETE PLANS
DO NOT USE FOR R/W ACQUISITION

CONST. REV.

R / W REV.



HUGH A. CLARK
DB 137 PG 507
DB 278 PG 163
DB 185 PG 267
DB 185 PG 270
DB 336 PG 206
PLAT A-5I PG 518

HUGH A. CLARK
DB 137 PG 507
DB 278 PG 163
DB 185 PG 267
DB 185 PG 270
DB 336 PG 206
PLAT A-5I PG 518

CARL E. CLARK
DB 256 PG 200
DB 278 PG 161

JOHN P. & PEGGY B. HILL
DB 155 PG 72

PEGGY B. HILL & GERALD B. CLARK
DB 278 PG 147
PLAT A-5I PG 518

-L3-		
PIs Sta. 28+05.432	PI Sta. 28+93.915	PIs Sta. 29+82.187
$\theta_s = 3^{\circ} 02' 37.8''$	$\Delta = 8^{\circ} 36' 02.7''$ (RT)	$\theta_s = 3^{\circ} 02' 37.8''$
$L_s = 85.000$	$L = 120.089$	$L_s = 85.000$
$LT = 56.675$	$T = 60.158$	$LT = 56.675$
$ST = 28.341$	$R = 800.000$	$ST = 28.341$
	$SE = 0.06$	

WE

WETHERILL
ENGINEERING, INC.

4915 Waters Edge Dr., Suite 295
Raleigh, North Carolina 27606
(919) 851-6077 Fax: (919) 851-8107

SEE SHEET 37 FOR -L3- PROFILE

15-DEC-1998 14:50
919-2562-d11p-roj-v-2562d21.psh
mike