

METRIC

PROJECT REFERENCE NO. R-2562D SHEET NO. 22

R/W SHEET NO.

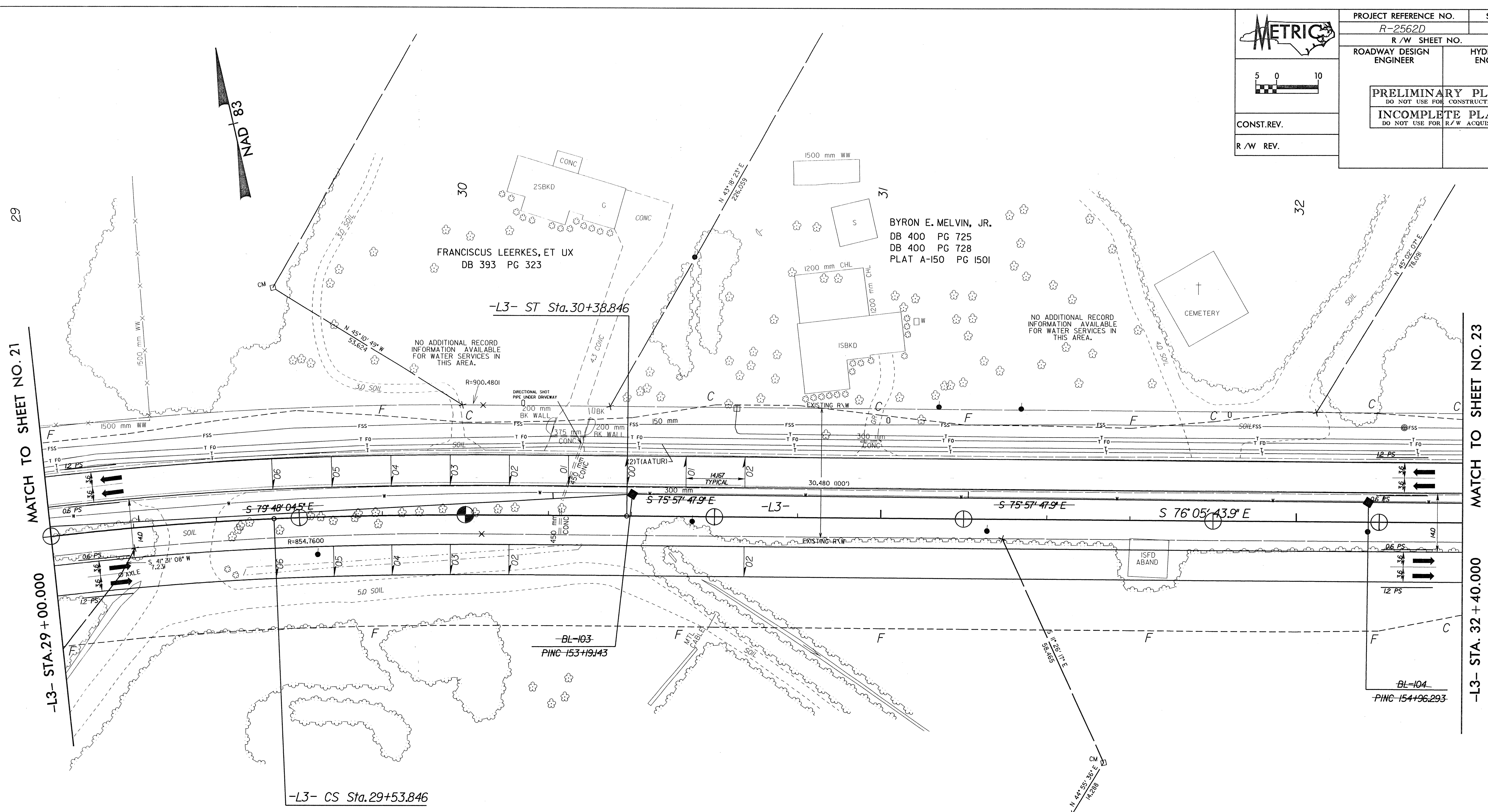
ROADWAY DESIGN ENGINEER HYDRAULICS ENGINEER

PRELIMINARY PLANS
DO NOT USE FOR CONSTRUCTION

INCOMPLETE PLANS
DO NOT USE FOR R/W ACQUISITION

CONST. REV.

R/W REV.



MATCH TO SHEET NO. 21

-L3- STA. 29+00.000

MATCH TO SHEET NO. 23

-L3- STA. 32+40.000

MARVIN & STEVEN W. TATUM
DBA QUALITY FARMS
DB 342 PG 531

N. W. HESTER, JR., ET AL
DB 125 PG 65
DB 31 PG 637
DB 339 PG 546
MC A55 PG 557
WF 90-E-160
WF 93-E-160

-L3-

Pls Sta 28+05.432	PI Sta 28+93.915	Pls Sta 29+82.187
Os = 3' 02' 37.8"	Δ = 8' 36' 02.7" (RT)	Os = 3' 02' 37.8"
Ls = 85.000	L = 120.089	Ls = 85.000
LT = 56.675	T = 60.158	LT = 56.675
ST = 28.341	R = 800.000	ST = 28.341
	SE = 0.06	

WE

WETHERILL
ENGINEERING, INC.

4915 Waters Edge Dr., Suite 296
Raleigh, North Carolina 27606
(919) 851-8077 Fax: (919) 851-8107

SEE SHEET 37 FOR -L3- PROFILE

15-DEC-1999 14:49
919-2562-2111 ProJ\2562ds22.pph
mlt10