

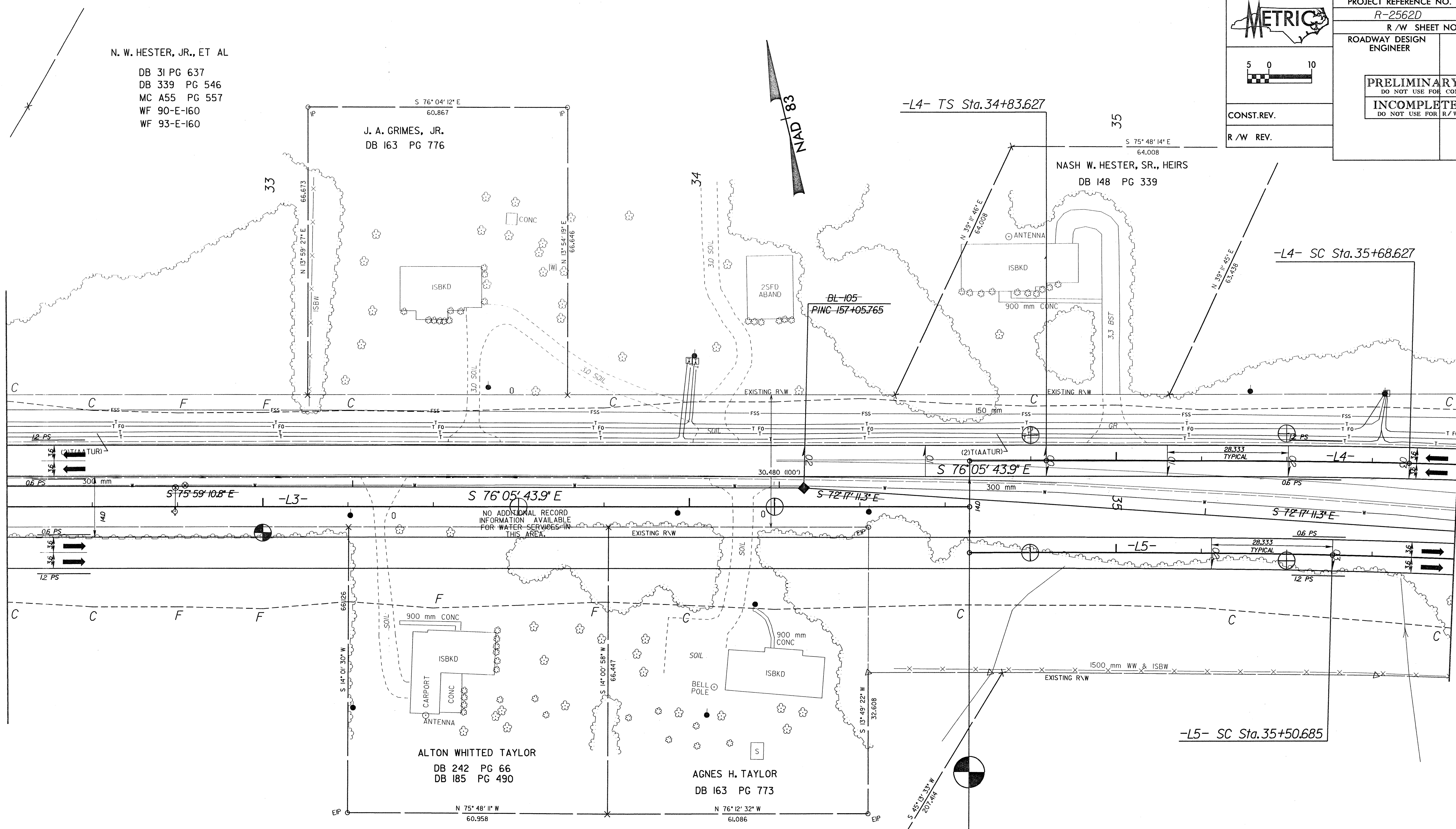
N. W. HESTER, JR., ET AL  
 DB 31 PG 637  
 DB 339 PG 546  
 MC A55 PG 557  
 WF 90-E-160  
 WF 93-E-160

MATCH TO SHEET NO. 22

-L3- STA. 32 + 40.000

MATCH TO SHEET NO. 24

-L5- STA. 35 + 80.000



-L4-		
Pls Sta 35+40.295 Os = 1' 23' 40.8"	Pl Sta 37+44.896 Δ = 1' 31' 46.8" (RT)	Pls Sta 39+48.311 Os = 1' 23' 40.8"
Ls = 85.000	L = 351.349	Ls = 85.000
LT = 56.668	T = 176.270	LT = 56.668
ST = 28.335	R = 1,746.000	ST = 28.335
	SE = 0.03	
-L5-		
Pls Sta 35+22.353 Os = 1' 24' 38.9"	Pl Sta 37+24.444 Δ = 1' 29' 50.5" (RT)	Pls Sta 39+25.371 Os = 1' 24' 38.9"
Ls = 85.000	L = 346.351	Ls = 85.000
LT = 56.668	T = 173.759	LT = 56.668
ST = 28.335	R = 1,726.000	ST = 28.335
	SE = 0.03	

N. W. HESTER, JR., ET AL  
 DB 125 PG 65  
 DB 31 PG 637  
 DB 339 PG 546  
 MC A55 PG 557  
 WF 90-E-160  
 WF 93-E-160

-L3- POT Sta.34+65.685 LB=  
 -L4- POT Sta.34+65.685 LA (10.6 LT.) =  
 -L5- TS Sta.34+65.685 LA (10.6 RT.) =

SARAH H. THORNTON  
 DB 134 PG 178  
 WF 90-E-160  
 WF 93-E-158



SEE SHEET 38 FOR -L3- PROFILE  
 SEE SHEET 38 FOR -L4- PROFILE  
 SEE SHEET 39 FOR -L5- PROFILE