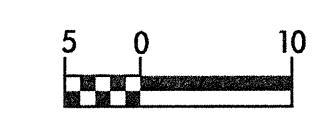
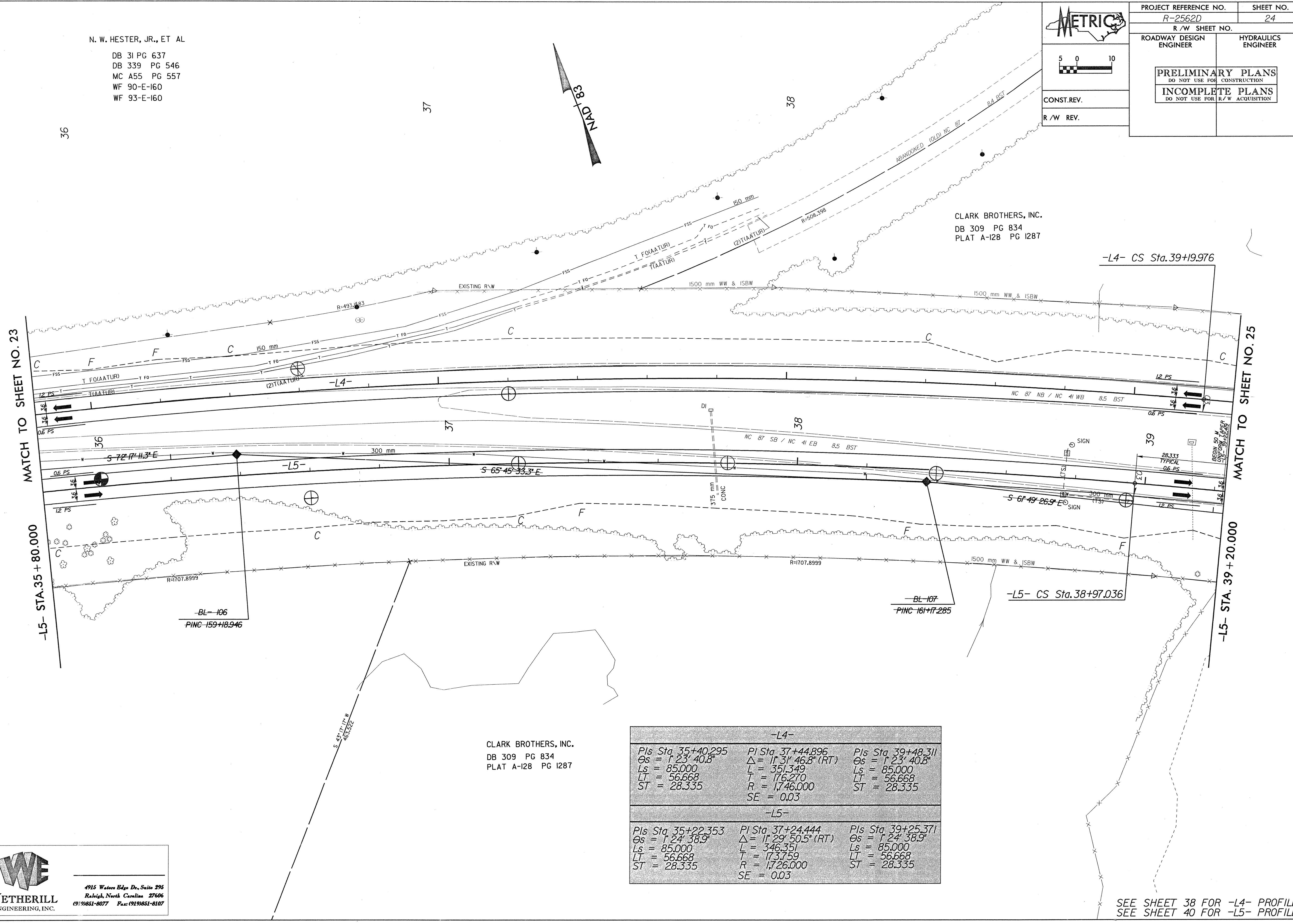


N. W. HESTER, JR., ET AL  
 DB 31 PG 637  
 DB 339 PG 546  
 MC A55 PG 557  
 WF 90-E-160  
 WF 93-E-160

PROJECT REFERENCE NO. R-2562D		SHEET NO. 24	
R/W SHEET NO.			
ROADWAY DESIGN ENGINEER		HYDRAULICS ENGINEER	
PRELIMINARY PLANS DO NOT USE FOR CONSTRUCTION		INCOMPLETE PLANS DO NOT USE FOR R/W ACQUISITION	
CONST.REV.			
R/W REV.			



CLARK BROTHERS, INC.  
 DB 309 PG 834  
 PLAT A-128 PG 1287



CLARK BROTHERS, INC.  
 DB 309 PG 834  
 PLAT A-128 PG 1287

-L4-		
PIs Sta 35+40.295	PI Sta 37+44.896	PIs Sta 39+48.311
Os = 1' 23' 40.8"	Δ = 11' 31' 46.8" (RT)	Os = 1' 23' 40.8"
Ls = 85.000	L = 351.349	Ls = 85.000
LT = 56.668	T = 176.270	LT = 56.668
ST = 28.335	R = 1,746.000	ST = 28.335
	SE = 0.03	

-L5-		
PIs Sta 35+22.353	PI Sta 37+24.444	PIs Sta 39+25.371
Os = 1' 24' 38.9"	Δ = 11' 29' 50.5" (RT)	Os = 1' 24' 38.9"
Ls = 85.000	L = 346.351	Ls = 85.000
LT = 56.668	T = 173.759	LT = 56.668
ST = 28.335	R = 1,726.000	ST = 28.335
	SE = 0.03	

4915 Waters Edge Dr, Suite 295  
 Raleigh, North Carolina 27606  
 (919) 851-8077 Fax: (919) 851-8107

SEE SHEET 38 FOR -L4- PROFILE  
 SEE SHEET 40 FOR -L5- PROFILE

15-DEC-1999 1448  
 gnt-2562d-1\p-rw-2562d-24.pah  
 mick