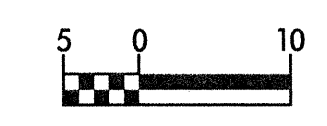




PROJECT REFERENCE NO. R-2562D	SHEET NO. 29
ROADWAY DESIGN ENGINEER	HYDRAULICS ENGINEER
<b>INCOMPLETE PLANS</b> DO NOT USE FOR R/W ACQUISITION <b>PRELIMINARY PLANS</b> DO NOT USE FOR CONSTRUCTION	
CONST. REV.	
R/W REV.	

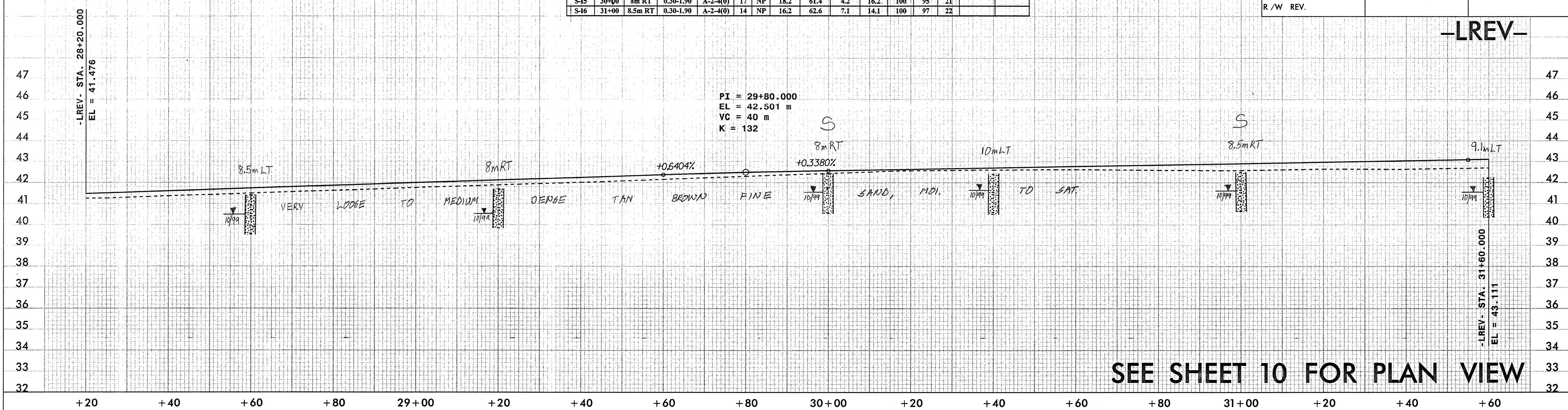


TBM #19 -LREV- STA 32+08.016  
 OFFSET 51.79 LT. RR SPIKE SET  
 IN BASE OF 22' PINE TREE  
 ELEV. 42.364

BM GPS (R2562CD-8)  
 -LREV- STA 32+35.217  
 OFFSET 7.657 RT.  
 ELEV. 43.275

BM GPS (R2562CD-9)  
 -LREV- STA 35+25.233  
 OFFSET 5.903 RT.  
 ELEV. 44.942

SAMPLE NO.	STATION	OFFSET	DEPTH INTERVAL	AASHTO CLASS	L.L.	P.I.	% BY WEIGHT				% PASSING (SIEVES)		% MOISTURE	% ORGANIC
							C.SAND	F.SAND	SILT	CLAY	2.0 mm	425 um		
S-15	30+00	8m RT	0.30-1.90	A-2-4(0)	17	NP	18.2	61.4	4.2	16.2	100	95	21	
S-16	31+00	8.5m RT	0.30-1.90	A-2-4(0)	14	NP	16.2	62.6	7.1	14.1	100	97	22	

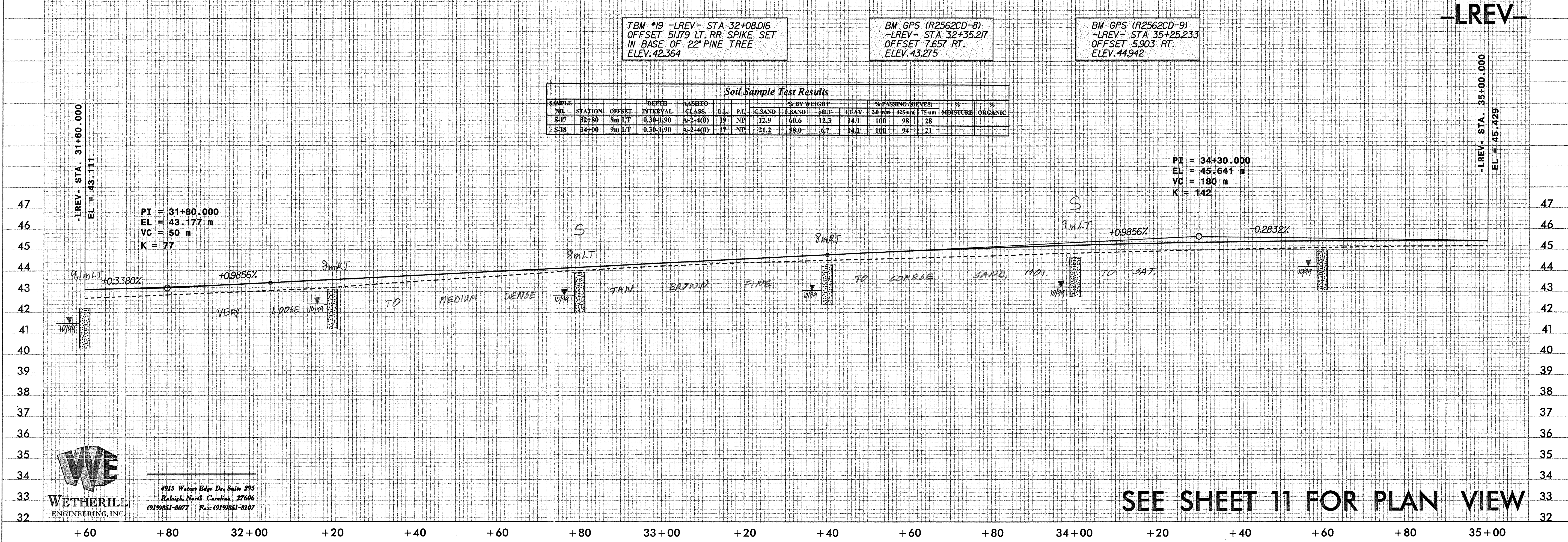


TBM #19 -LREV- STA 32+08.016  
 OFFSET 51.79 LT. RR SPIKE SET  
 IN BASE OF 22' PINE TREE  
 ELEV. 42.364

BM GPS (R2562CD-8)  
 -LREV- STA 32+35.217  
 OFFSET 7.657 RT.  
 ELEV. 43.275

BM GPS (R2562CD-9)  
 -LREV- STA 35+25.233  
 OFFSET 5.903 RT.  
 ELEV. 44.942

SAMPLE NO.	STATION	OFFSET	DEPTH INTERVAL	AASHTO CLASS	L.L.	P.I.	% BY WEIGHT				% PASSING (SIEVES)		% MOISTURE	% ORGANIC
							C.SAND	F.SAND	SILT	CLAY	2.0 mm	425 um		
S-17	32+80	8m LT	0.30-1.90	A-2-4(0)	19	NP	12.9	60.6	12.5	14.1	100	98	28	
S-18	34+00	9m LT	0.30-1.90	A-2-4(0)	17	NP	21.2	58.0	6.7	14.1	100	94	21	



4915 Water Edge Dr, Suite 295  
 Raleigh, North Carolina 27606  
 (919)851-8077 Fax: (919)851-8107

15-DEC-1998 11:09  
 R:\2562D\1\p01r-2562d.p1