

5 0 10

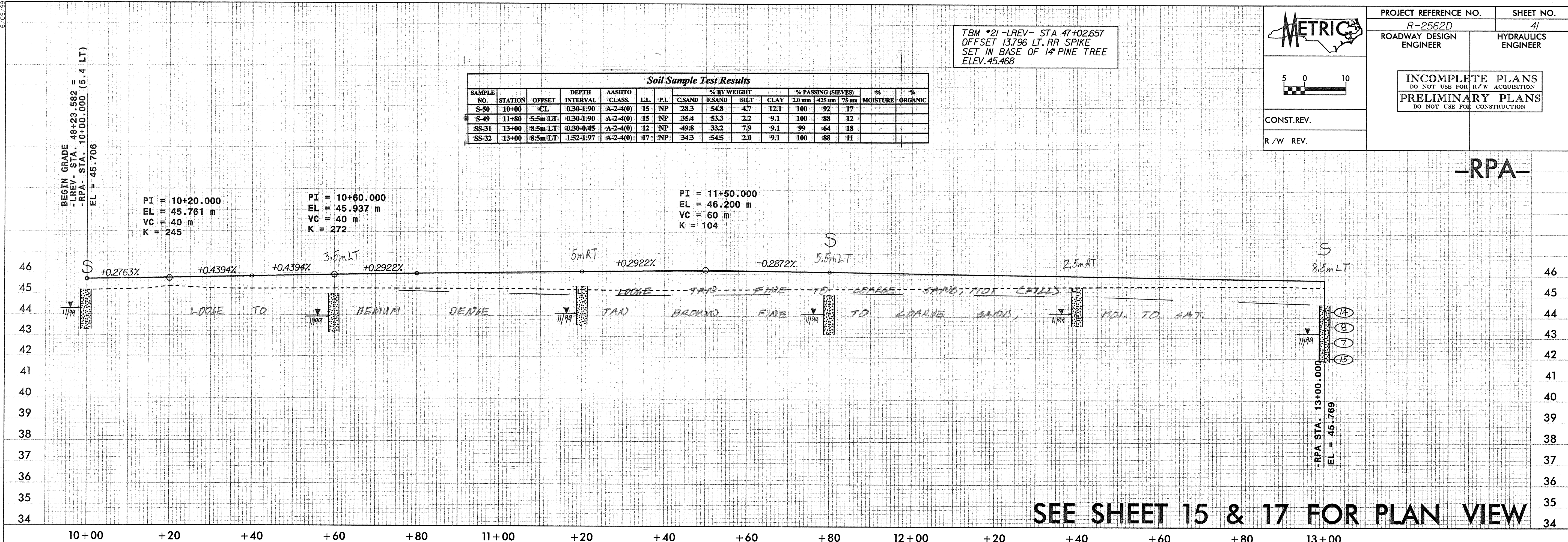
CONST. REV.

R/W REV.

PROJECT REFERENCE NO. R-2562D	SHEET NO. 41
ROADWAY DESIGN ENGINEER	HYDRAULICS ENGINEER
<b>INCOMPLETE PLANS</b> DO NOT USE FOR R/W ACQUISITION <b>PRELIMINARY PLANS</b> DO NOT USE FOR CONSTRUCTION	

TBM \*21 -LREV- STA 47+02.657  
 OFFSET 13796 LT. RR SPIKE  
 SET IN BASE OF 14" PINE TREE  
 ELEV. 45.468

SAMPLE NO.	STATION	OFFSET	DEPTH INTERVAL	AASHTO CLASS.	L.L.	P.I.	% BY WEIGHT				% PASSING (SIEVES)			% MOISTURE	% ORGANIC
							C.SAND	F.SAND	SILT	CLAY	20 mm	425 um	75 um		
S-50	10+00	CL	0.30-1.90	A-2-4(0)	15	NP	28.3	54.8	4.7	12.1	100	92	17		
S-49	11+80	5.5m LT	0.30-1.90	A-2-4(0)	15	NP	35.4	53.3	2.2	9.1	100	88	12		
SS-31	13+00	8.5m LT	0.30-0.45	A-2-4(0)	12	NP	49.8	33.2	7.9	9.1	99	64	18		
SS-32	13+00	8.5m LT	1.52-1.97	A-2-4(0)	17	NP	34.3	54.5	2.0	9.1	100	88	11		

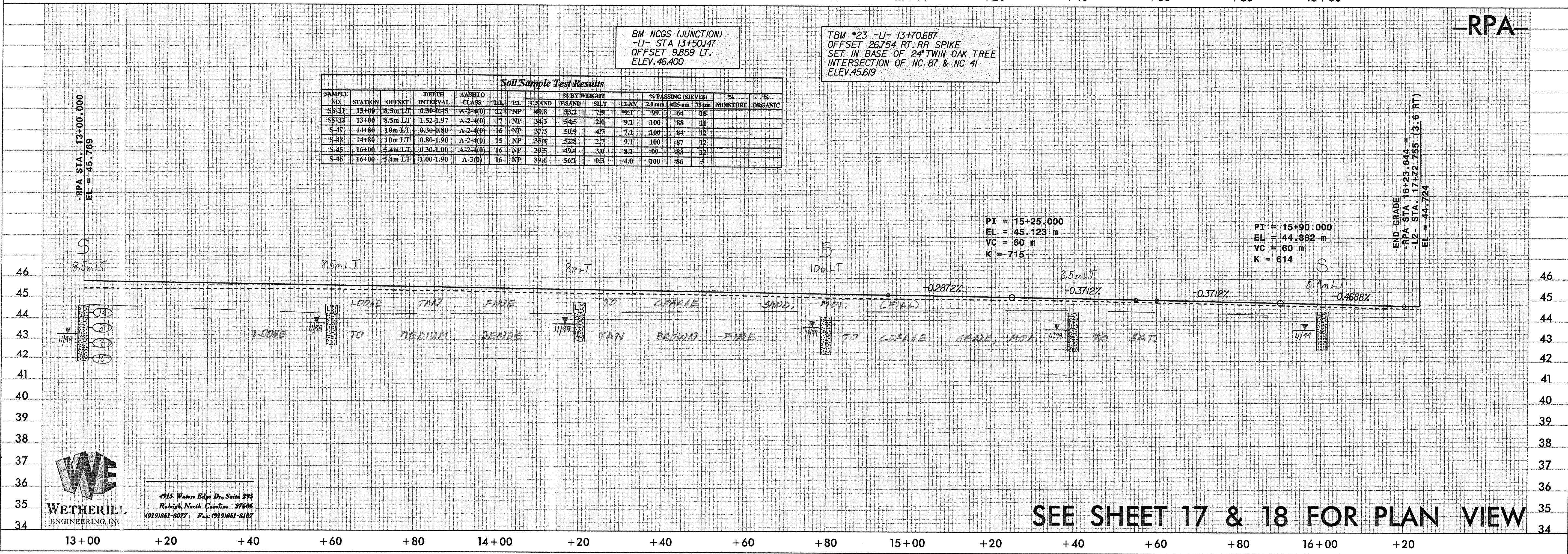


SEE SHEET 15 & 17 FOR PLAN VIEW

BM NCGS (JUNCTION)  
 -LJ- STA 13+50.147  
 OFFSET 9859 LT.  
 ELEV. 46.400

TBM \*23 -LJ- 13+70.687  
 OFFSET 26754 RT. RR SPIKE  
 SET IN BASE OF 24" TWIN OAK TREE  
 INTERSECTION OF NC 87 & NC 41  
 ELEV. 45.619

SAMPLE NO.	STATION	OFFSET	DEPTH INTERVAL	AASHTO CLASS.	L.L.	P.I.	% BY WEIGHT				% PASSING (SIEVES)			% MOISTURE	% ORGANIC
							C.SAND	F.SAND	SILT	CLAY	20 mm	425 um	75 um		
SS-31	13+00	8.5m LT	0.30-0.45	A-2-4(0)	12	NP	49.8	33.2	7.9	9.1	99	64	18		
SS-32	13+00	8.5m LT	1.52-1.97	A-2-4(0)	17	NP	34.3	54.5	2.0	9.1	100	88	11		
S-47	14+80	10m LT	0.30-0.80	A-2-4(0)	16	NP	37.3	50.9	4.7	7.1	100	84	12		
S-48	14+80	10m LT	0.80-1.90	A-2-4(0)	15	NP	35.4	52.8	2.7	9.1	100	87	12		
S-45	16+00	5.4m LT	0.30-1.00	A-2-4(0)	16	NP	39.5	49.4	3.0	8.1	99	83	12		
S-46	16+00	5.4m LT	1.00-1.90	A-3(0)	16	NP	39.6	56.1	0.3	4.0	100	86	5		



SEE SHEET 17 & 18 FOR PLAN VIEW

4315 Watson Edge Dr., Suite 205  
 Raleigh, North Carolina 27606  
 (919) 881-8077 Fax: (919) 881-8107

15-DEC-09 09:14:44  
 D:\MKC\2562D\1\p01\2562d.p01