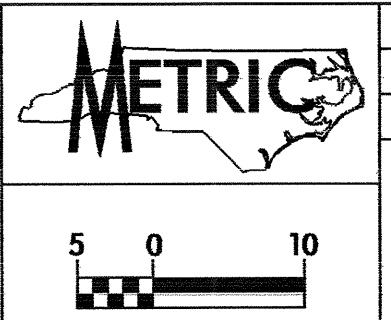
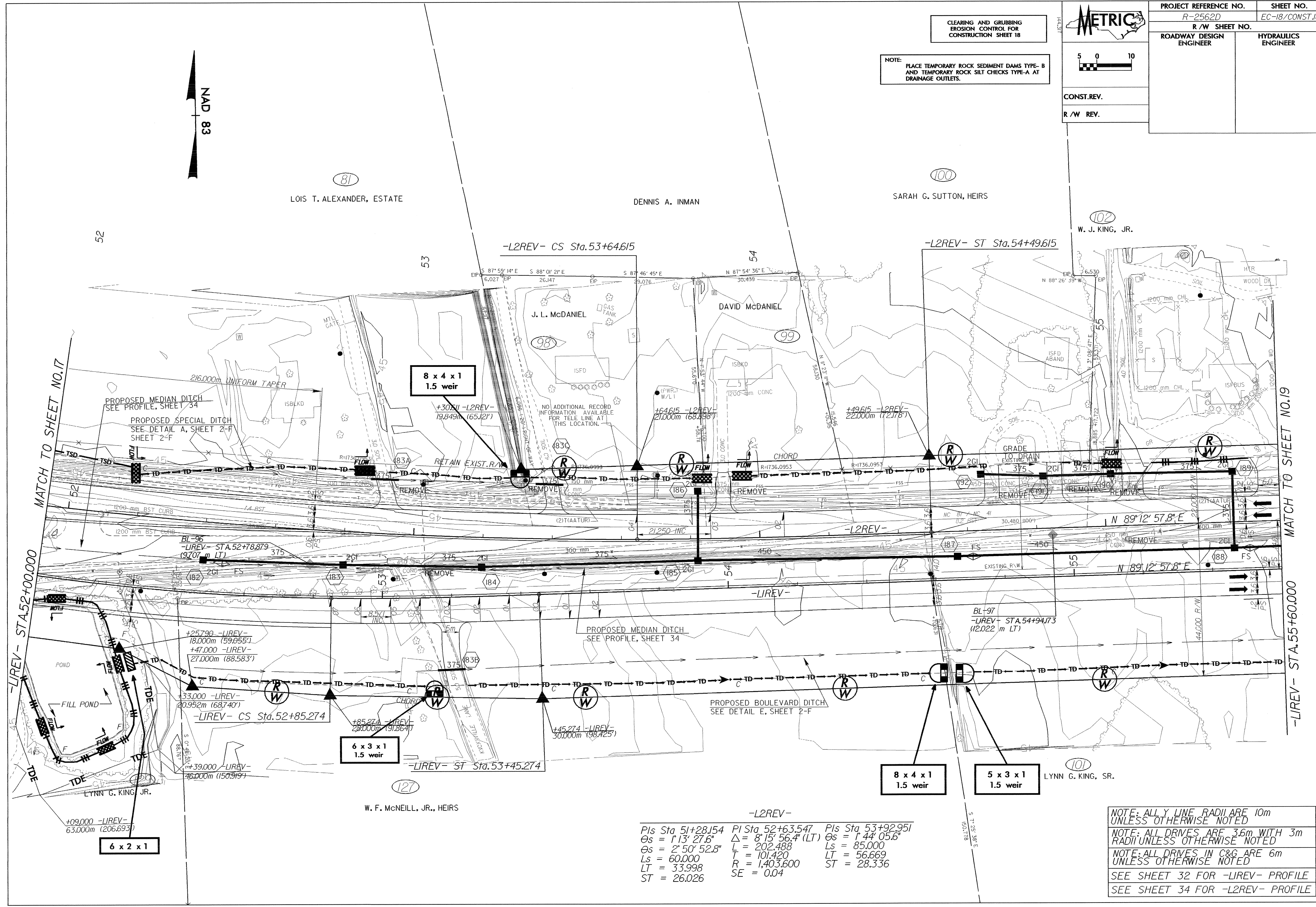
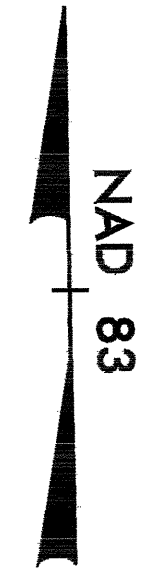


| | |
|----------------------------------|-----------------------------|
| PROJECT REFERENCE NO. R-2562D | SHEET NO. EC-18/CONST.18 |
| R/W SHEET NO. | |
| ROADWAY DESIGN ENGINEER | HYDRAULICS ENGINEER |
| CONST. REV. | |
| R/W REV. | |



CLEARING AND GRUBBING
EROSION CONTROL FOR
CONSTRUCTION SHEET 18

NOTE:
PLACE TEMPORARY ROCK SEDIMENT DAMS TYPE-B
AND TEMPORARY ROCK SILT CHECKS TYPE-A AT
DRAINAGE OUTLETS.



-L2REV-

| | | |
|-------------------|-----------------------|-------------------|
| Pls Sta 51+28.154 | PI Sta 52+63.547 | Pls Sta 53+92.951 |
| Os = 1° 13' 27.6" | Δ = 8° 15' 56.4" (LT) | Os = 1° 44' 05.6" |
| Os = 2° 50' 52.8" | L = 202.488 | Ls = 85.000 |
| Ls = 60.000 | T = 101.420 | LT = 56.669 |
| LT = 33.998 | R = 1,403.600 | ST = 28.336 |
| ST = 26.026 | SE = 0.04 | |

NOTE: ALL Y LINE RADII ARE 10m
UNLESS OTHERWISE NOTED
NOTE: ALL DRIVES ARE 3.6m WITH 3m
RADII UNLESS OTHERWISE NOTED
NOTE: ALL DRIVES IN C&G ARE 6m
UNLESS OTHERWISE NOTED
SEE SHEET 32 FOR -LIREV- PROFILE
SEE SHEET 34 FOR -L2REV- PROFILE

MATCH TO SHEET NO.17

MATCH TO SHEET NO.19

-LIREV- STA.52+00.000

-LIREV- STA.55+60.000

LOIS T. ALEXANDER, ESTATE

DENNIS A. INMAN

SARAH G. SUTTON, HEIRS

W. J. KING, JR.

W. F. McNEILL, JR., HEIRS

LYNN G. KING, SR.