

CLEARING AND GRUBBING
EROSION CONTROL FOR
CONSTRUCTION SHEET 25

NOTE:
PLACE TEMPORARY ROCK SEDIMENT DAMS TYPE-B
AND TEMPORARY ROCK SILT CHECKS TYPE-A AT
DRAINAGE OUTLETS.

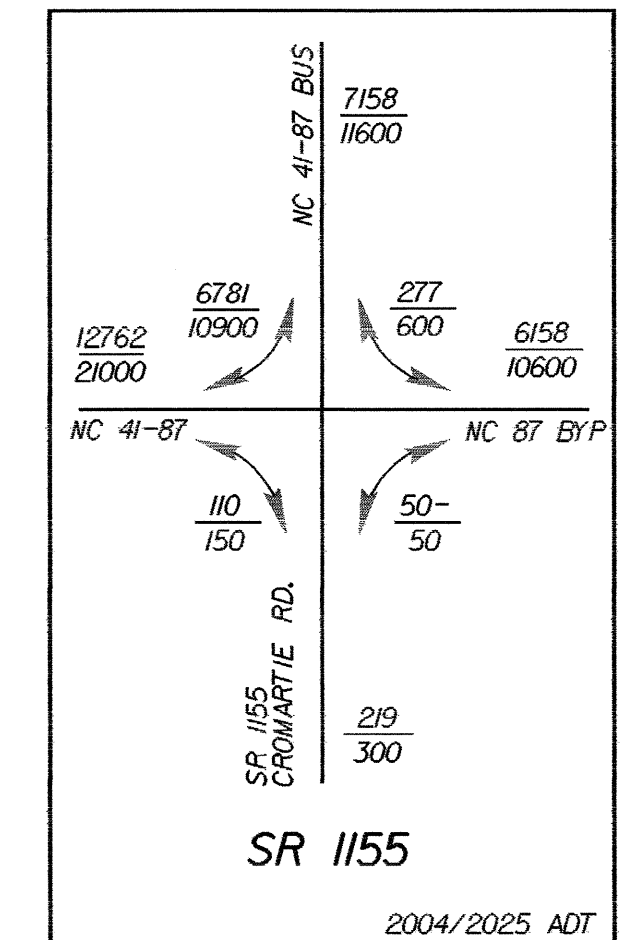
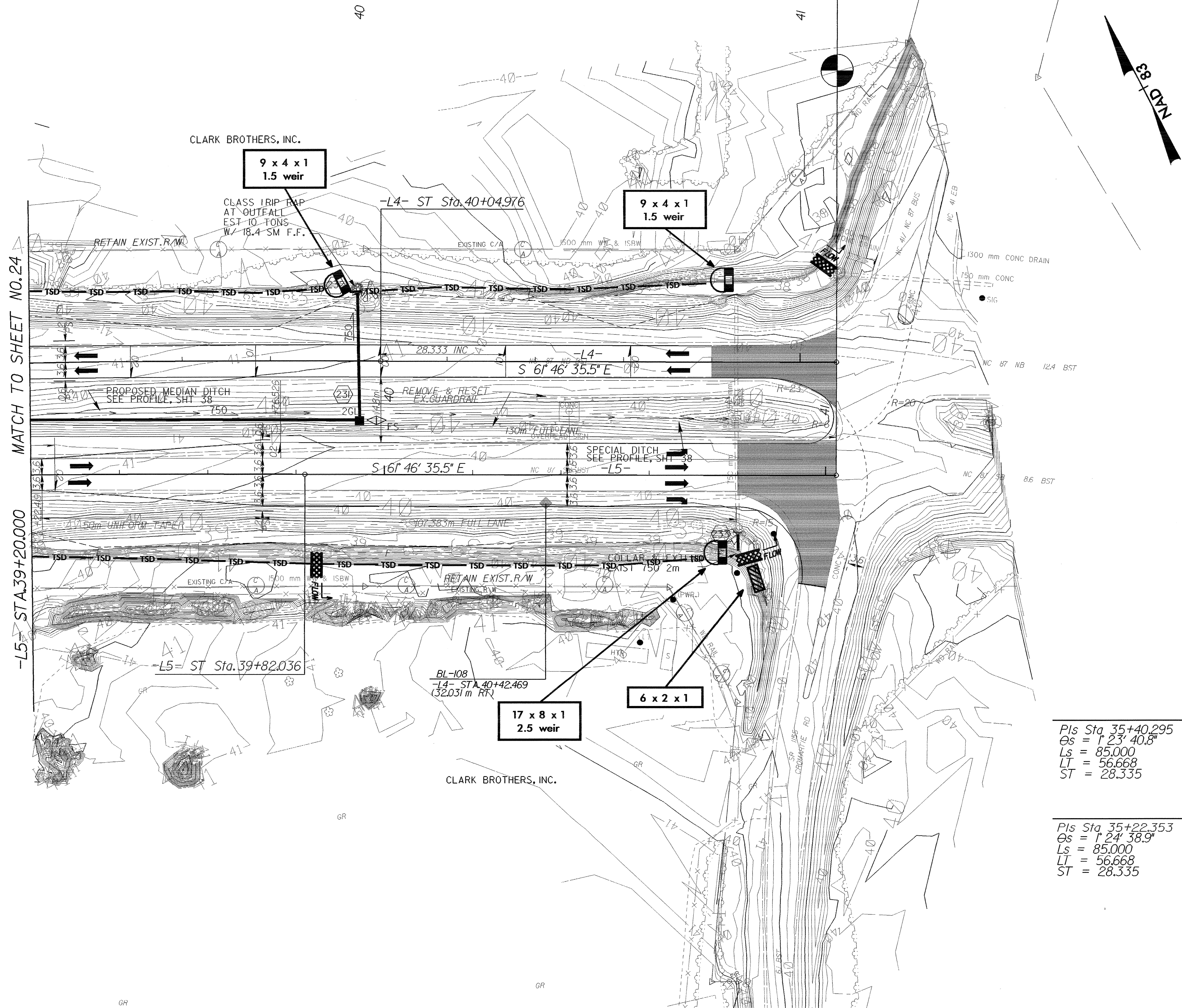
END STATE PROJECT R-2562D
-L4- POT Sta. 41+08.271 =
-L5- POT Sta. 41+02.419 (25,600 RT)



CONST. REV.

R/W REV.

| | |
|----------------------------------|-----------------------------|
| PROJECT REFERENCE NO. R-2562D | SHEET NO. EC-25/CONST.25 |
| R/W SHEET NO. | |
| ROADWAY DESIGN ENGINEER | HYDRAULICS ENGINEER |



| -L4- | | |
|--------------------|------------------------|--------------------|
| PIs Sta. 35+40.295 | PI Sta. 37+44.896 | PIs Sta. 39+48.311 |
| Os = 1° 23' 40.8" | Δ = 11° 31' 46.8" (RT) | Os = 1° 23' 40.8" |
| Ls = 85,000 | L = 351.349 | Ls = 85,000 |
| LT = 56,668 | T = 176.270 | LT = 56,668 |
| ST = 28.335 | R = 1,746.000 | ST = 28.335 |
| | SE = 0.03 | |
| -L5- | | |
| PIs Sta. 35+22.353 | PI Sta. 37+24.444 | PIs Sta. 39+25.371 |
| Os = 1° 24' 38.9" | Δ = 11° 29' 50.5" (RT) | Os = 1° 24' 38.9" |
| Ls = 85,000 | L = 346.351 | Ls = 85,000 |
| LT = 56,668 | T = 173.759 | LT = 56,668 |
| ST = 28.335 | R = 1,726.000 | ST = 28.335 |
| | SE = 0.03 | |

SEE SHEET 38 FOR -L4- PROFILE
SEE SHEET 39 FOR -L5- PROFILE