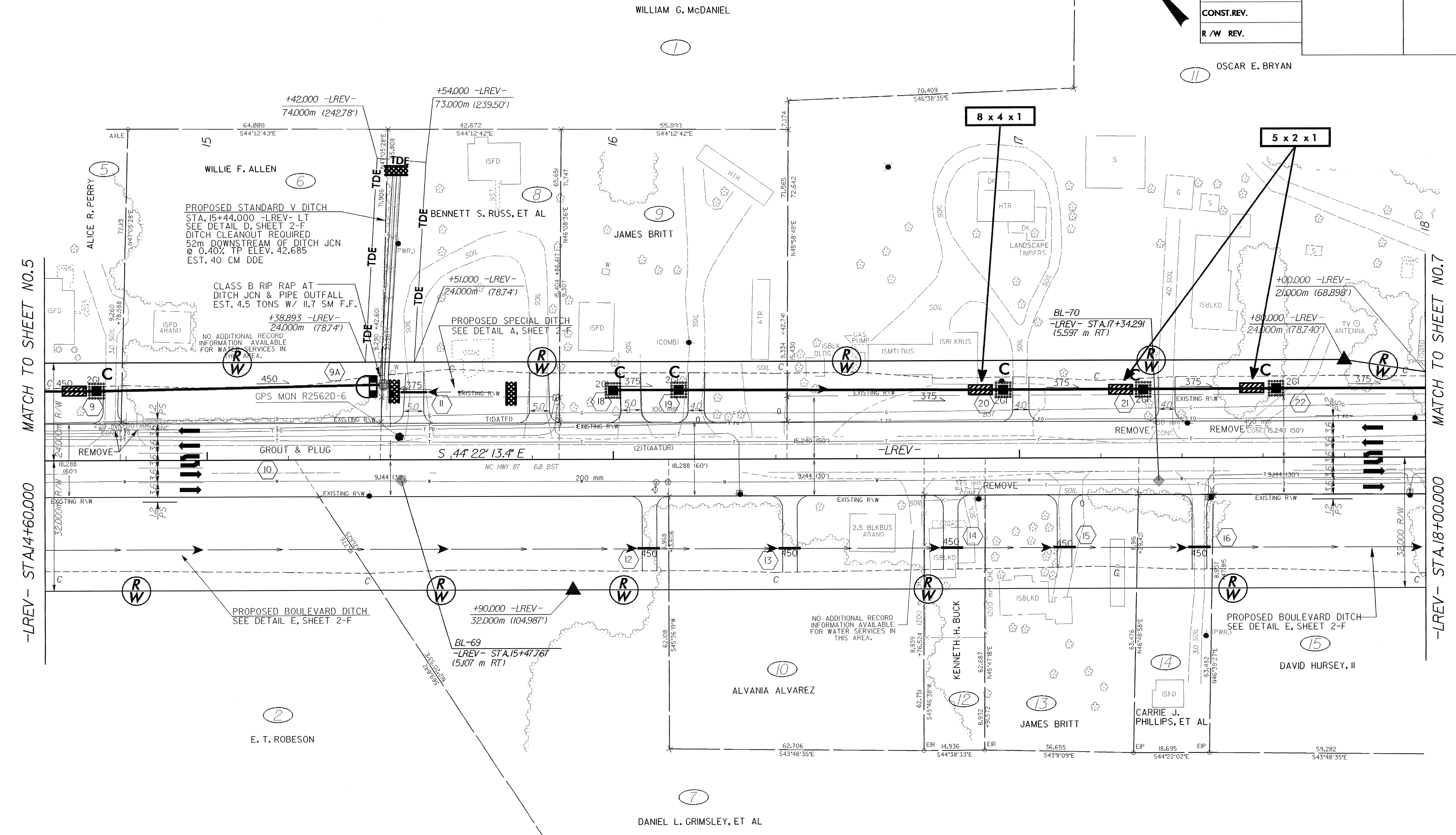
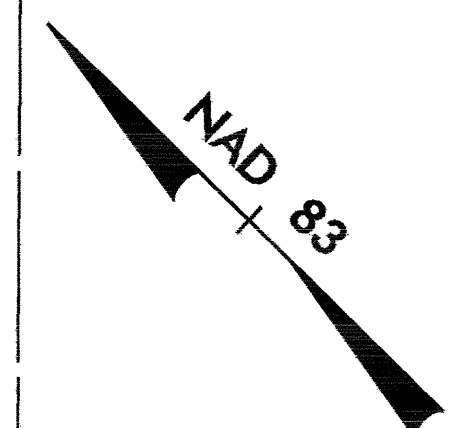


METRIC

5 0 10

CONST.REV.
R/W REV.

PROJECT REFERENCE NO. R-2562D	SHEET NO. EC-28/CONST.6
R/W SHEET NO.	
ROADWAY DESIGN ENGINEER	HYDRAULICS ENGINEER



MATCH TO SHEET NO.5

-LREV- STA.14+60.000

MATCH TO SHEET NO.7

-LREV- STA.18+00.000

NOTE: ALL DRIVES ARE 3.6m WITH 3m RADI UNLESS OTHERWISE NOTED
NOTE: ALL DRIVES IN C&G ARE 6m UNLESS OTHERWISE NOTED
SEE SHEET 27 FOR -LREV- PROFILE