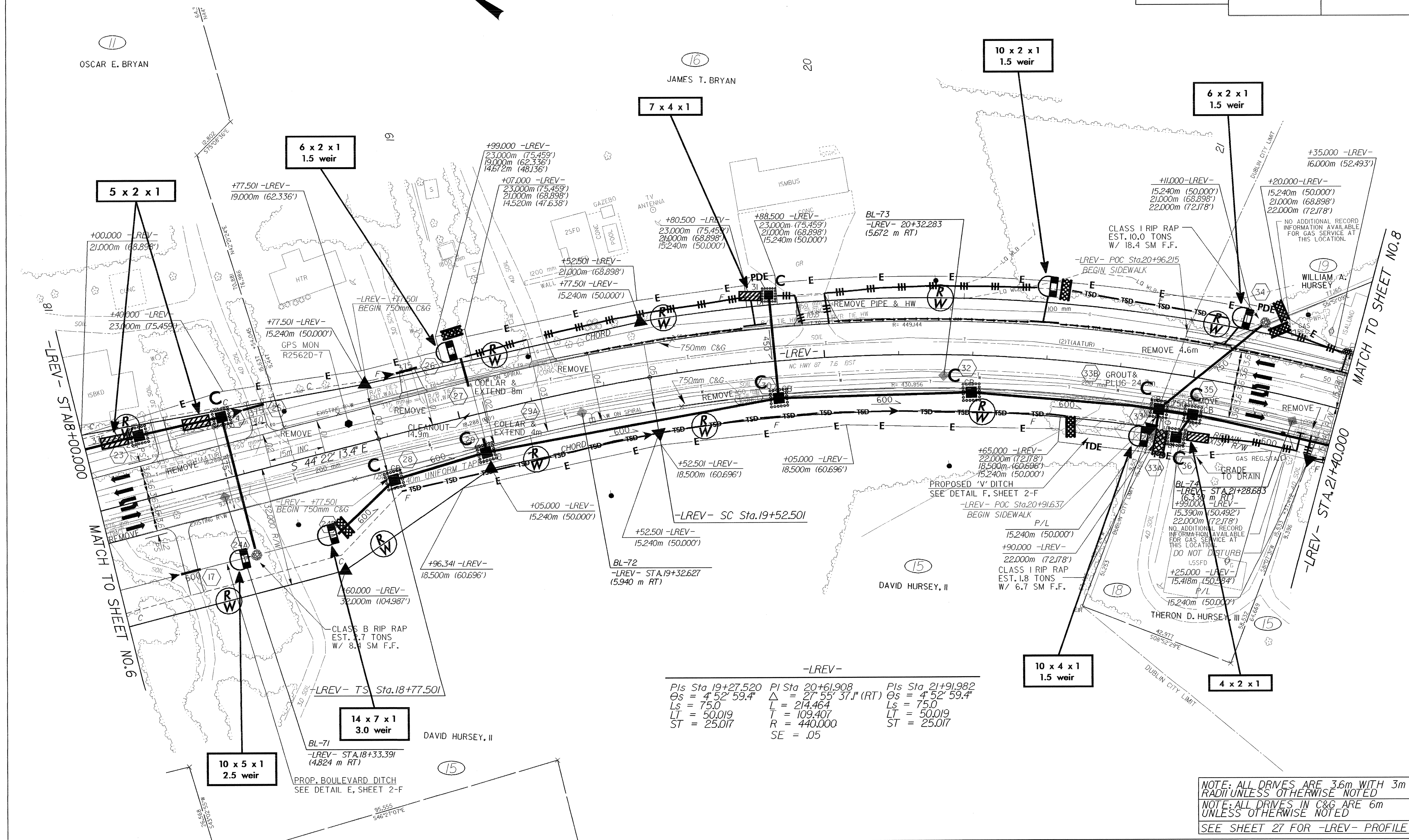
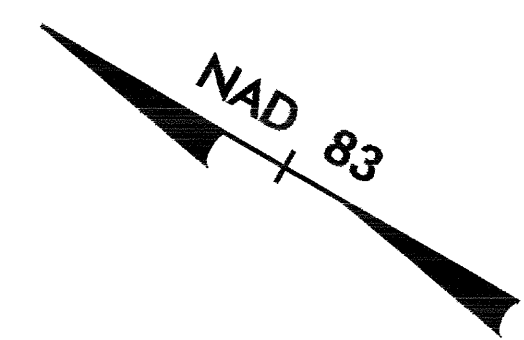
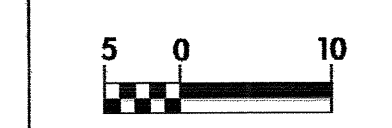




PROJECT REFERENCE NO. R-2562D	SHEET NO. EC-29/CONST.7
R/W SHEET NO.	HYDRAULICS ENGINEER
ROADWAY DESIGN ENGINEER	
CONST.REV.	
R/W REV.	



NOTE: ALL DRIVES ARE 3.6m WITH 3m RADIUS UNLESS OTHERWISE NOTED
 NOTE: ALL DRIVES IN C&G ARE 6m UNLESS OTHERWISE NOTED
 SEE SHEET 27 FOR -LREV- PROFILE