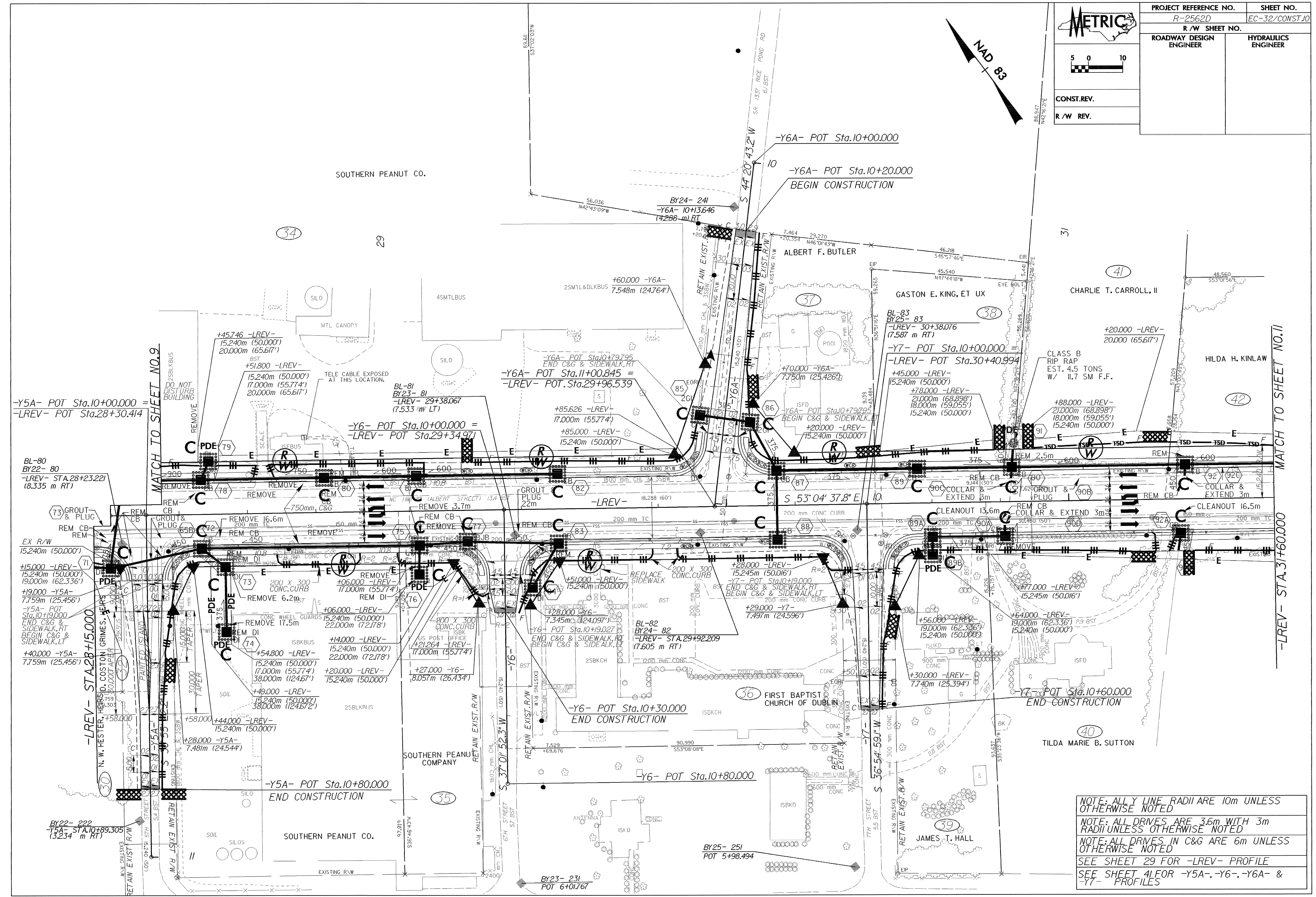
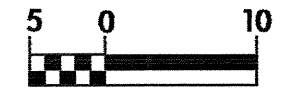


PROJECT REFERENCE NO.	SHEET NO.
R-2562D	EC-32/CONST.10
R/W SHEET NO.	
ROADWAY DESIGN ENGINEER	HYDRAULICS ENGINEER
CONST. REV.	
R/W REV.	



MATCH TO SHEET NO. 9
 DO NOT DISTURB BUILDING
 -Y5A- POT Sta. 10+00.000 =
 -LREV- POT Sta. 28+30.414
 BL-80
 BY22- 80
 -LREV- STA. 28+23.221
 (8.335 m RT)

EX R/W
 15.240m (50.000')
 +15.000 -LREV-
 15.240m (50.000')
 19.000m (62.336')
 +19.000 -Y5A-
 7.759m (25.456')
 -Y5A- POT
 Sta. 10+19.000
 END C&G &
 SIDEWALK, RT
 BEGIN C&G &
 SIDEWALK, LT
 +40.000 -Y5A-
 7.759m (25.456')

BY22- 222
 -Y5A- STA. 10+89.305
 (3.234 m RT)

NOTE: ALL Y LINE RADII ARE 10m UNLESS OTHERWISE NOTED
 NOTE: ALL DRIVES ARE 3.6m WITH 3m RADII UNLESS OTHERWISE NOTED
 NOTE: ALL DRIVES IN C&G ARE 6m UNLESS OTHERWISE NOTED
 SEE SHEET 29 FOR -LREV- PROFILE
 SEE SHEET 41 FOR -Y5A-, -Y6-, -Y6A- & -Y7- PROFILES

MATCH TO SHEET NO. 11
 -LREV- STA. 31+60.000