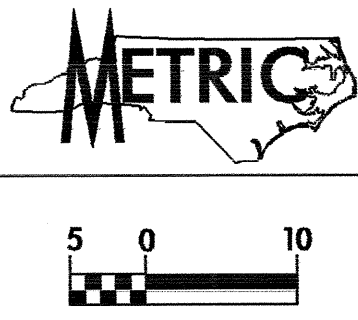
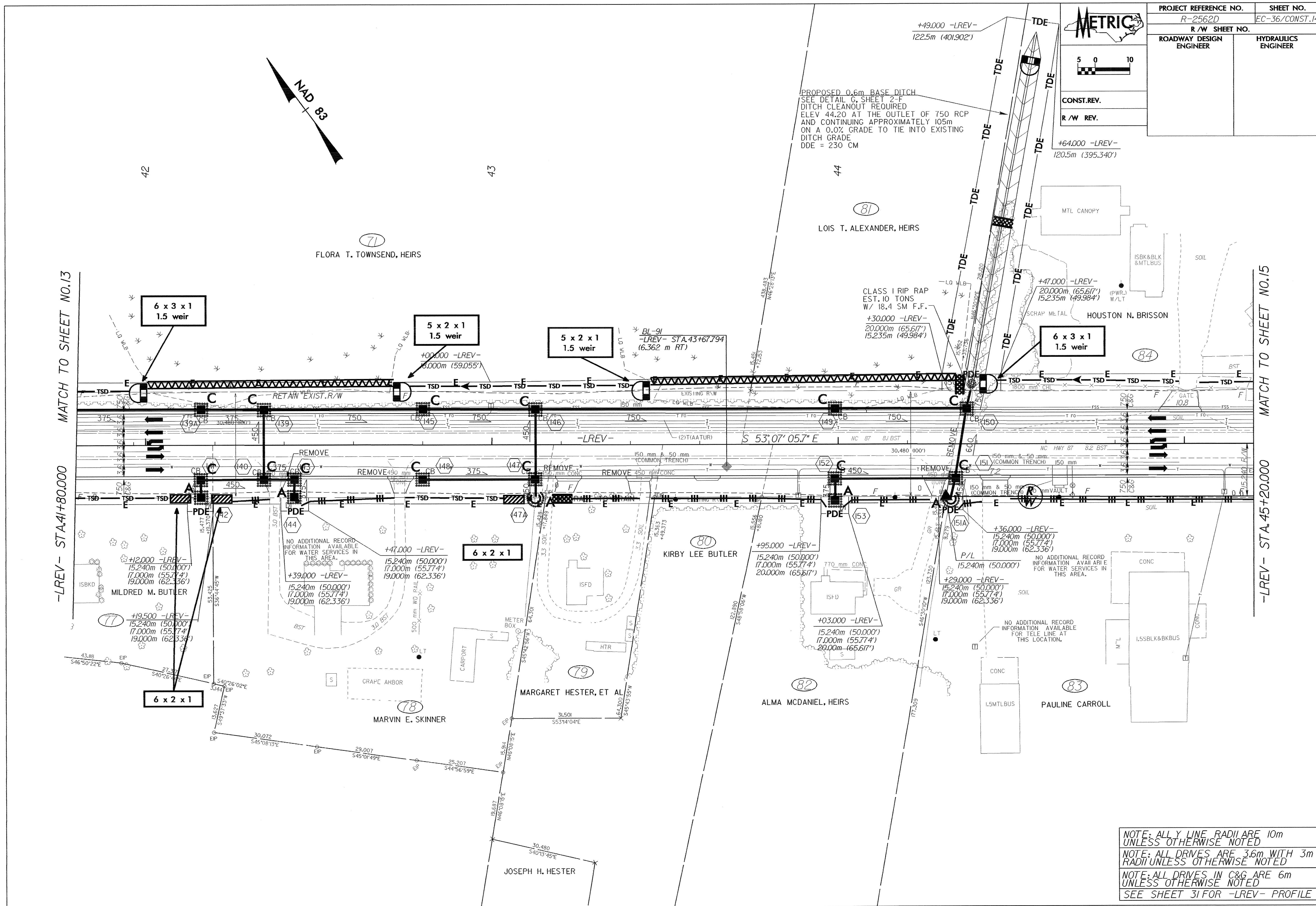


PROJECT REFERENCE NO. R-2562D	SHEET NO. EC-36/CONST.14
R/W SHEET NO.	HYDRAULICS ENGINEER
ROADWAY DESIGN ENGINEER	



CONST.REV.
R/W REV.



MATCH TO SHEET NO.13

-LREV- STA.41+80.000

MATCH TO SHEET NO.15

-LREV- STA.45+20.000

NOTE: ALL Y LINE RADII ARE 10m UNLESS OTHERWISE NOTED
 NOTE: ALL DRIVES ARE 3.6m WITH 3m RADII UNLESS OTHERWISE NOTED
 NOTE: ALL DRIVES IN C&G ARE 6m UNLESS OTHERWISE NOTED
 SEE SHEET 31 FOR -LREV- PROFILE