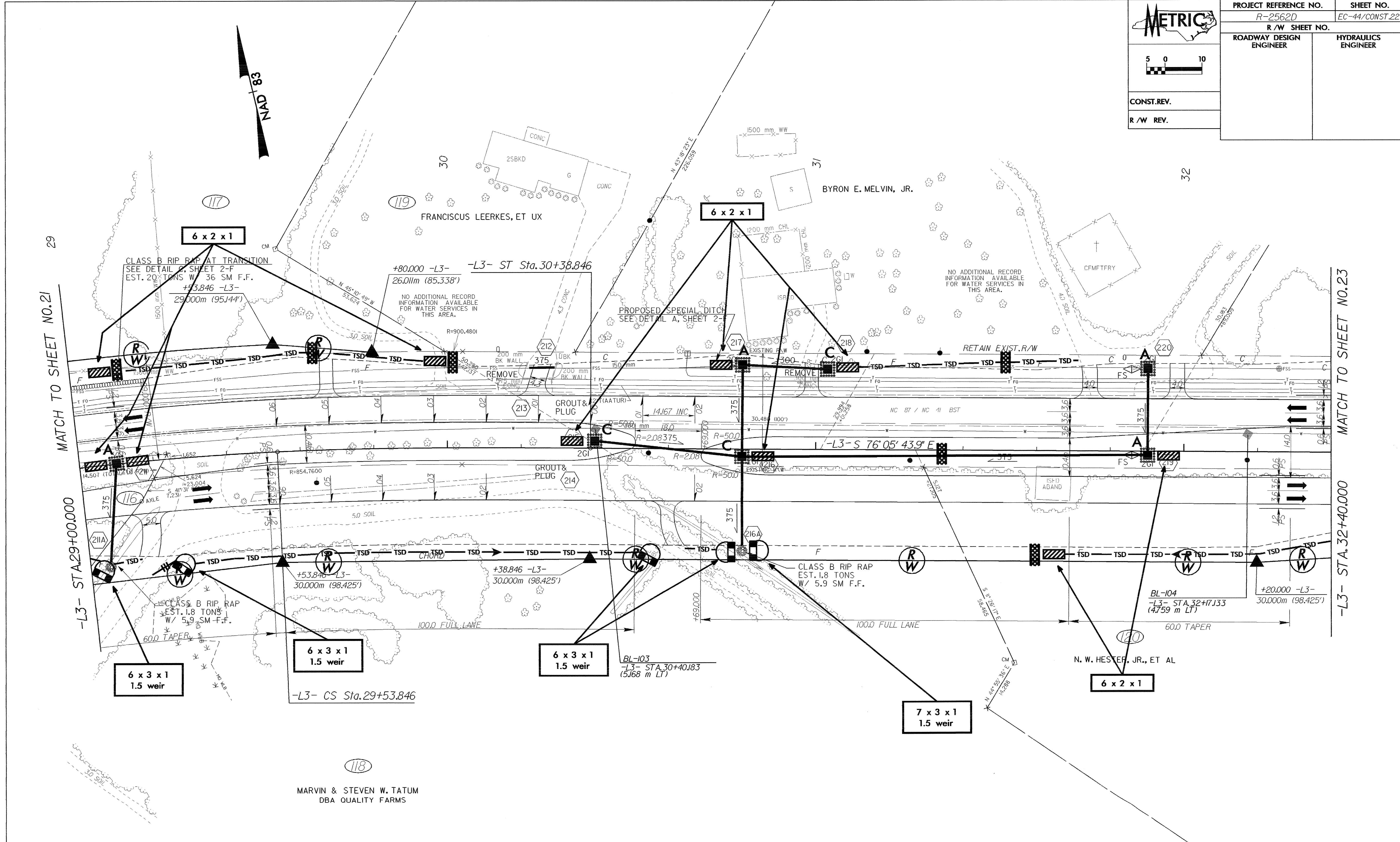


MATCH TO SHEET NO.21
-L3- STA.29+00.000

MATCH TO SHEET NO.23
-L3- STA.32+40.000



-L3-

| | | |
|-------------------|-----------------------|-------------------|
| Pls Sta 28+05.432 | Pl Sta 28+93.915 | Pls Sta 29+82.187 |
| Os = 3' 02' 37.8" | Δ = 8' 36' 02.7" (RT) | Os = 3' 02' 37.8" |
| Ls = 85.000 | L = 120.089 | Ls = 85.000 |
| LT = 56.675 | T = 60.158 | LT = 56.675 |
| ST = 28.341 | R = 800.000 | ST = 28.341 |
| | SE = 0.06 | |

NOTE: ALL Y LINE RADII ARE 10m UNLESS OTHERWISE NOTED
 NOTE: ALL DRIVES ARE 3.6m WITH 3m RADII UNLESS OTHERWISE NOTED
 NOTE: ALL DRIVES IN C&G ARE 6m UNLESS OTHERWISE NOTED
 SEE SHEET 36 FOR -L3- PROFILE