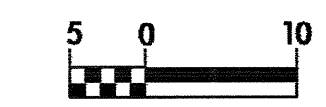
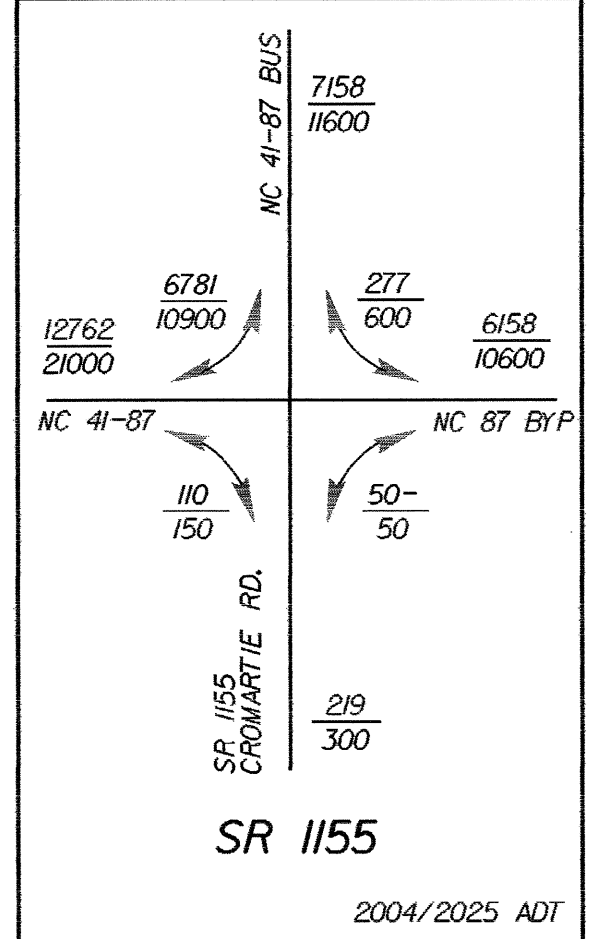
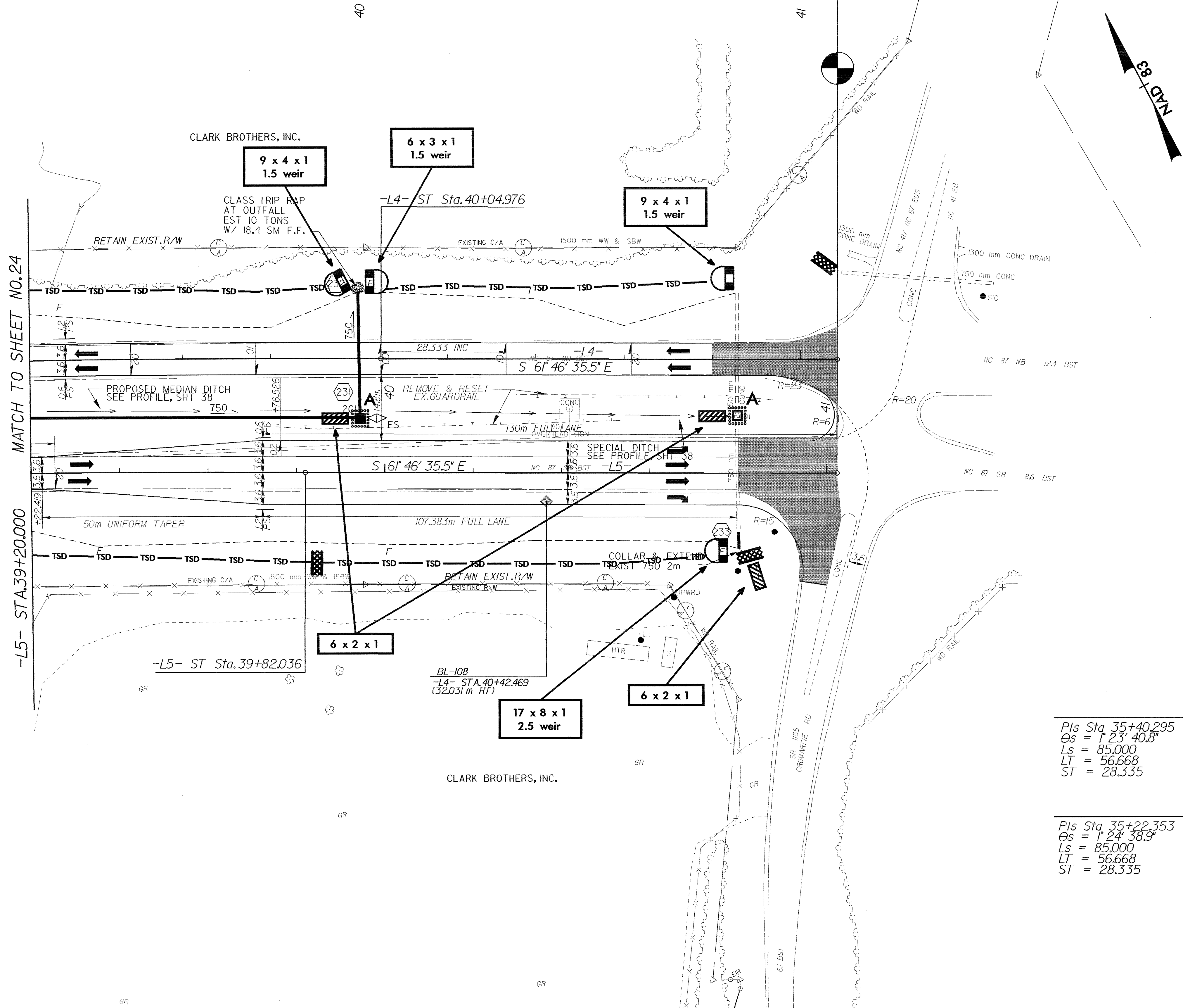




PROJECT REFERENCE NO. R-2562D	SHEET NO. EC-47/CONST.25
R/W SHEET NO.	
ROADWAY DESIGN ENGINEER	HYDRAULICS ENGINEER
CONST.REV.	
R/W REV.	



END STATE PROJECT R-2562D  
 -L4- POT Sta.41+08.271 =  
 -L5- POT Sta.41+02.419 (25.600 RT)



MATCH TO SHEET NO.24

-L5- STA.39+20.000

-L4-		
Pls Sta 35+40.295 Os = 1° 23' 40.8"	Pl Sta 37+44.896 Δ = 11° 31' 46.8" (RT)	Pls Sta 39+48.311 Os = 1° 23' 40.8"
Ls = 85.000	L = 351.349	Ls = 85.000
LT = 56.668	T = 176.270	LT = 56.668
ST = 28.335	R = 1,746.000	ST = 28.335
	SE = 0.03	
-L5-		
Pls Sta 35+22.353 Os = 1° 24' 38.9"	Pl Sta 37+24.444 Δ = 11° 29' 50.5" (RT)	Pls Sta 39+25.371 Os = 1° 24' 38.9"
Ls = 85.000	L = 346.351	Ls = 85.000
LT = 56.668	T = 173.759	LT = 56.668
ST = 28.335	R = 1,726.000	ST = 28.335
	SE = 0.03	

SEE SHEET 38 FOR -L4- PROFILE  
 SEE SHEET 39 FOR -L5- PROFILE