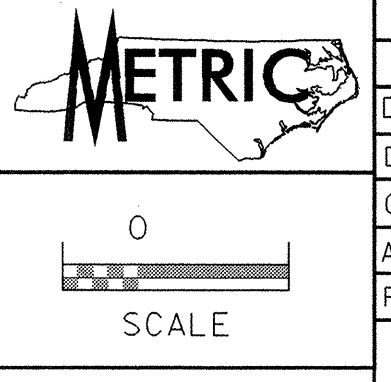


042592



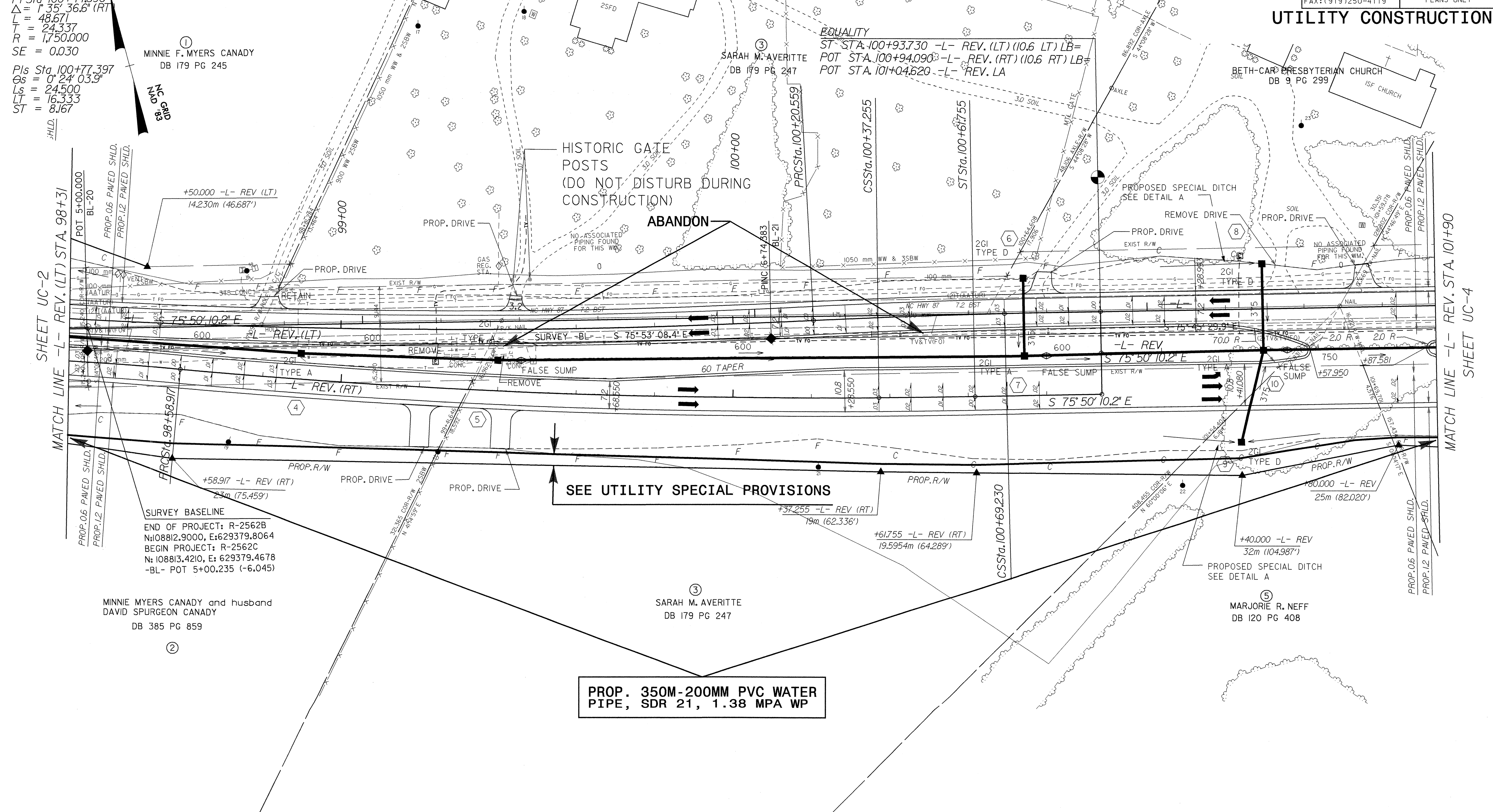
PROJECT REFERENCE NO.	R-2562C	SHEET NO.	UC-3
DESIGNED BY:	CSG		
DRAWN BY:	CSG		
CHECKED BY:			
APPROVED BY:			
REVISED:		NORTH CAROLINA DEPARTMENT OF TRANSPORTATION DESIGN SERVICES UNIT PHONE: (919)250-4128 FAX: (919)250-4119	
UTILITY CONSTRUCTION PLANS ONLY			

-L- REV (LT) CURVE DATA

PI Sta 97+68.068 Os = 1°22'07.4" Ls = 43.000 LT = 28.668 ST = 14.334	PI Sta 98+05.403 Δ = 2°55'41.5" (RT) L = 45.996 T = 23.003 R = 900.000 SE = 0.052	PI Sta 99+24.574 Δ = 6°17'29.4" (LT) L = 192.163 T = 96.178 R = 1,750.000 SE = 0.030
PI Sta 100+44.896 Δ = 1°35'36.6" (RT) L = 48.671 T = 24.337 R = 1,750.000 SE = 0.030		
PI Sta 100+77.397 Os = 0°24'03.9" Ls = 24.500 LT = 16.333 ST = 8.167		

-L- REV (RT) CURVE DATA

PI Sta 97+68.068 Os = 1°22'07.4" Ls = 43.000 LT = 28.668 ST = 14.334	PI Sta 98+20.681 Δ = 4°52'16.4" (RT) L = 76.517 T = 38.281 R = 900.000 SE = 0.052	PI Sta 99+48.163 Δ = 5°50'19.0" (LT) L = 178.338 T = 89.246 R = 1,750.000 SE = 0.030	PI Sta 100+45.422 Os = 0°24'03.9" Ls = 24.500 LT = 16.333 ST = 8.167
--	--	---	--



SHEET UC-2
MATCH LINE -L- REV. (LT) STA. 98+31

MATCH LINE -L- REV. STA. 101+90
SHEET UC-4

SURVEY BASELINE
 END OF PROJECT: R-2562B
 N: 108812.9000, E: 629379.8064
 BEGIN PROJECT: R-2562C
 N: 108813.4210, E: 629379.4678
 -BL- POT 5+00.235 (-6.045)

MINNIE MYERS CANADY and husband
 DAVID SPURGEON CANADY
 DB 385 PG 859

SARAH M. AVERITTE
 DB 179 PG 247

MARJORIE R. NEFF
 DB 120 PG 408

PROP. 350M-200MM PVC WATER PIPE, SDR 21, 1.38 MPA WP

SEE UTILITY SPECIAL PROVISIONS

SEE SHEET 32 FOR -L- REV. PROFILE

I:\001\004 9837 143\Proj\UC3002.dwg
 11/15/2011 10:52:15 AM
 ssp@bcb.com