

042597

METRIC

PROJECT REFERENCE NO. **R-2562C** SHEET NO. **UC-7**

DESIGNED BY: **CSG**

DRAWN BY: **CSG**

CHECKED BY:

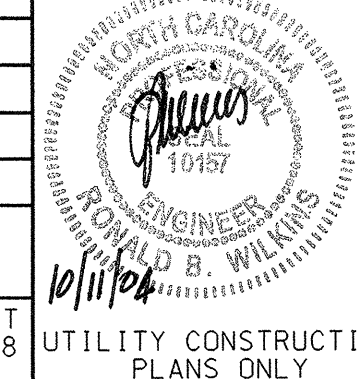
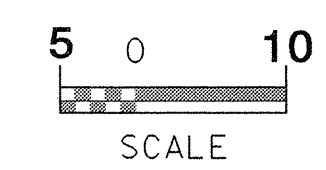
APPROVED BY:

REVISED:

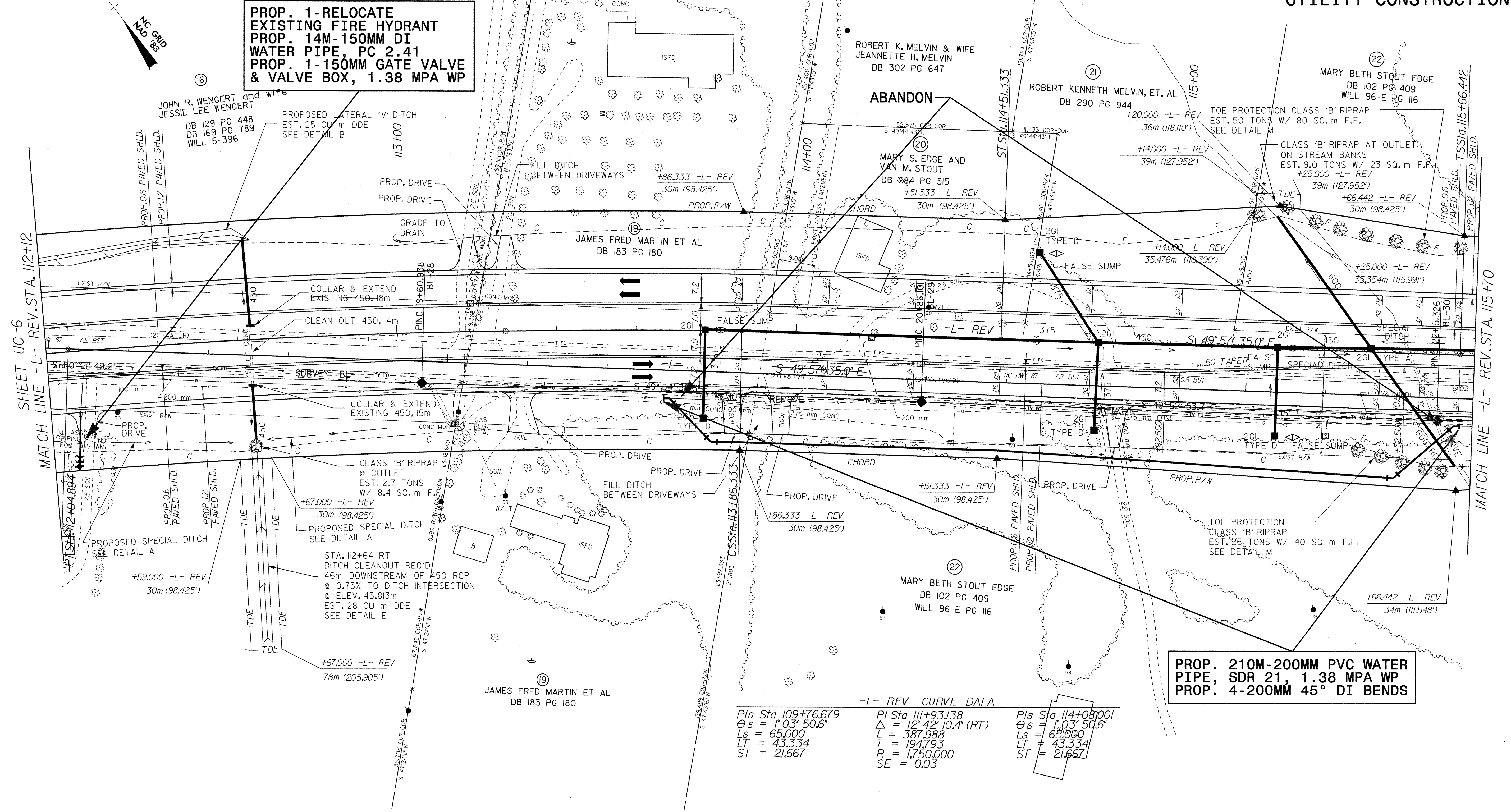
NORTH CAROLINA DEPARTMENT OF TRANSPORTATION

DESIGN SERVICES UNIT
PHONE: (919)250-4128
FAX: (919)250-4119

UTILITY CONSTRUCTION PLANS ONLY



UTILITY CONSTRUCTION



-L- REV CURVE DATA

Pls Sta 109+76.679	Pls Sta 111+93.138	Pls Sta 114+08.001
Os = 1° 03' 50.6"	Δ = 12° 42' 10.4" (RT)	Os = 1° 03' 50.6"
Ls = 65.000	L = 387.988	Ls = 65.000
LT = 43.334	T = 194.793	LT = 43.334
ST = 21.667	R = 1,750.000	ST = 21.667
	SE = 0.03	

SEE SHEET 34 FOR -L- REV. PROFILE

PROJECT: 004 0838
 ROUTE: 111, 117, 119, 121, 123, 125, 127, 129, 131, 133, 135, 137, 139, 141, 143, 145, 147, 149, 151, 153, 155
 DATE: 11/11/14
 DRAWN BY: CSG