
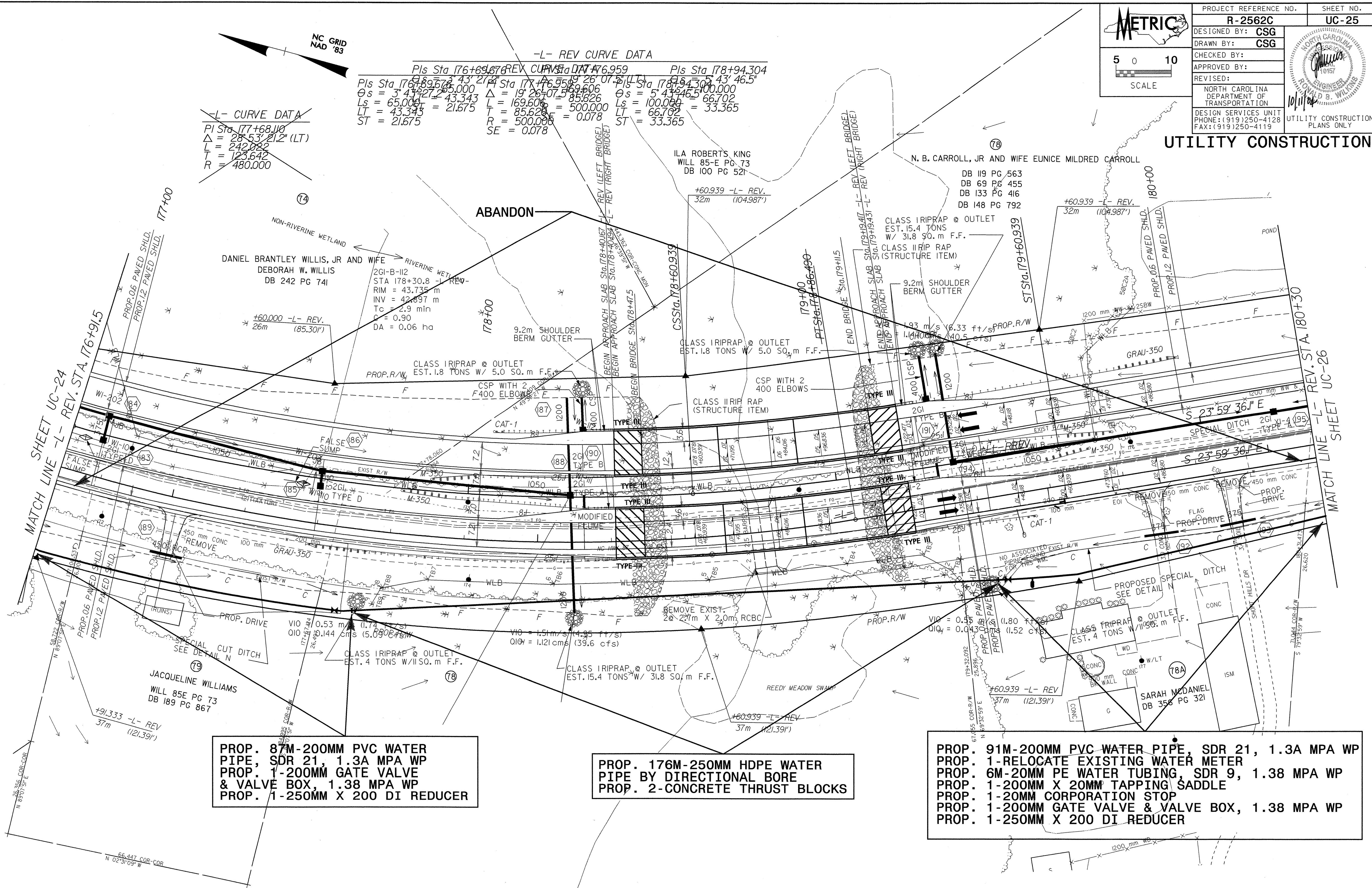


042537
10/01/2004 09:41
ag06bbid

 SCALE 5 0 10	PROJECT REFERENCE NO. R-2562C	SHEET NO. UC-25
	DESIGNED BY: CSG	CHECKED BY: CSG
	APPROVED BY:	
	REVISED:	
	NORTH CAROLINA DEPARTMENT OF TRANSPORTATION	
	DESIGN SERVICES UNIT PHONE: (919)250-4128 FAX: (919)250-4119	
	UTILITY CONSTRUCTION PLANS ONLY	

~~L-CURVE DATA~~
PI Sta 177+68.110
 $\Delta = 28.53' 21.2" (LT)$
 $L = 242.082$
 $T = 123.642$
 $R = 480.000$

~~-L- REV CURVE DATA~~
Pls Sta 176+69.674
 $\theta_s = 3.43427 = 195.000$
 $L_s = 65.000$
 $LT = 43.343 = 21.675$
 $ST = 21.675$
Pls Sta 177+46.519
 $\Delta = 19.26407 = 85.626$
 $L = 169.606 = 500.000$
 $LT = 85.626 = 0.078$
 $SE = 0.078$
Pls Sta 178+94.304
 $\theta_s = 5.43465 = 100.000$
 $L_s = 100.000$
 $LT = 66.702 = 33.365$
 $ST = 33.365$



PROP. 87M-200MM PVC WATER PIPE, SDR 21, 1.3A MPA WP
PROP. 1-200MM GATE VALVE & VALVE BOX, 1.38 MPA WP
PROP. 1-250MM X 200 DI REDUCER

PROP. 176M-250MM HDPE WATER PIPE BY DIRECTIONAL BORE
PROP. 2-CONCRETE THRUST BLOCKS

PROP. 91M-200MM PVC WATER PIPE, SDR 21, 1.3A MPA WP
PROP. 1-RELOCATE EXISTING WATER METER
PROP. 6M-200MM PE WATER TUBING, SDR 9, 1.38 MPA WP
PROP. 1-200MM X 20MM TAPPING SADDLE
PROP. 1-20MM CORPORATION STOP
PROP. 1-200MM GATE VALVE & VALVE BOX, 1.38 MPA WP
PROP. 1-250MM X 200 DI REDUCER

SEE SHEET 44 FOR -L- REV. PROFILE