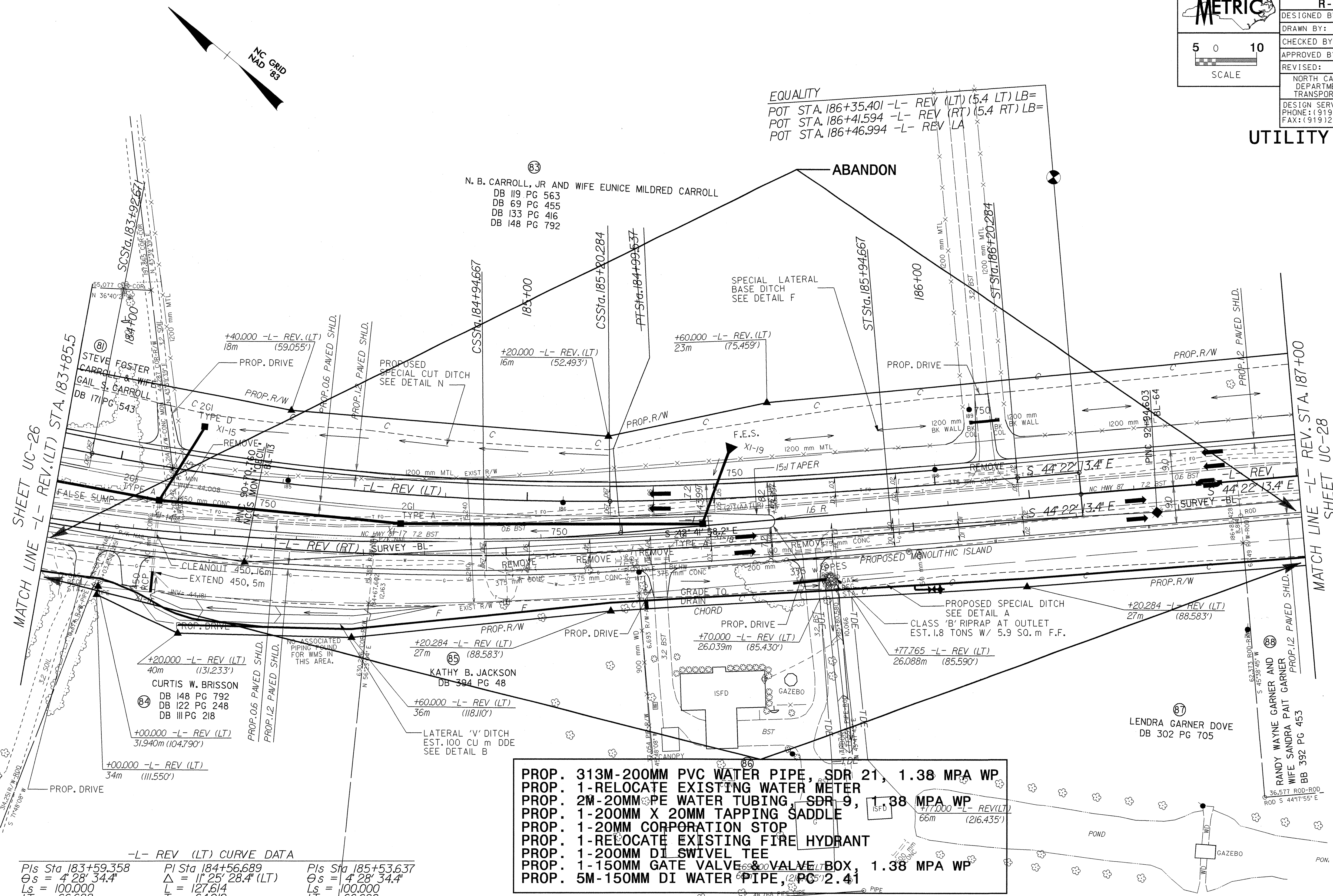


PROJECT REFERENCE NO.	R-2562C	SHEET NO.	UC-27
DESIGNED BY:	CSG		
DRAWN BY:	CSG		
CHECKED BY:			
APPROVED BY:			
REVISED:		NORTH CAROLINA DEPARTMENT OF TRANSPORTATION DESIGN SERVICES UNIT PHONE: (919) 250-4128 FAX: (919) 250-4119	
UTILITY CONSTRUCTION			



**PROP. 313M-200MM PVC WATER PIPE, SDR 21, 1.38 MPA WP**  
**PROP. 1-RELOCATE EXISTING WATER METER**  
**PROP. 2M-20MM PE WATER TUBING, SDR 9, 1.38 MPA WP**  
**PROP. 1-200MM X 20MM TAPPING SADDLE**  
**PROP. 1-20MM CORPORATION STOP**  
**PROP. 1-RELOCATE EXISTING FIRE HYDRANT**  
**PROP. 1-200MM DI SWIVEL TEE**  
**PROP. 1-150MM GATE VALVE & VALVE BOX, 1.38 MPA WP**  
**PROP. 5M-150MM DI WATER PIPE, PG 2.41**

**-L- REV (LT) CURVE DATA**

Pls Sta 183+59.358	Pls Sta 184+56.689	Pls Sta 185+53.637
$\theta_s = 4' 28' 34.4''$	$\Delta = 11' 25' 28.4''$ (LT)	$\theta_s = 4' 28' 34.4''$
$L_s = 100.000$	$L = 127.614$	$L_s = 100.000$
$LT = 66.688$	$T = 64.019$	$LT = 66.688$
$ST = 33.353$	$R = 640.000$	$ST = 33.353$
	$SE = 0.067$	

**-L- REV (RT) CURVE DATA**

Pls Sta 183+33.742	Pls Sta 184+31.073	Pls Sta 185+28.020
$\theta_s = 4' 28' 34.4''$	$\Delta = 11' 25' 28.4''$ (LT)	$\theta_s = 4' 28' 34.4''$
$L_s = 100.000$	$L = 127.614$	$L_s = 100.000$
$LT = 66.688$	$T = 64.019$	$LT = 66.688$
$ST = 33.353$	$R = 640.000$	$ST = 33.353$
	$SE = 0.067$	

SEE SHEET 45 FOR -L- REV. PROFILE