
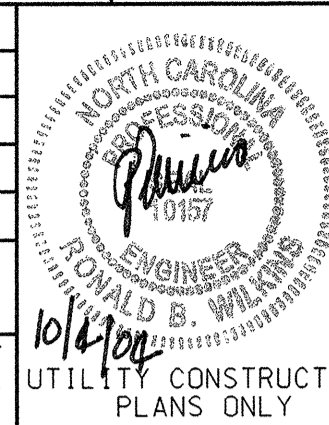
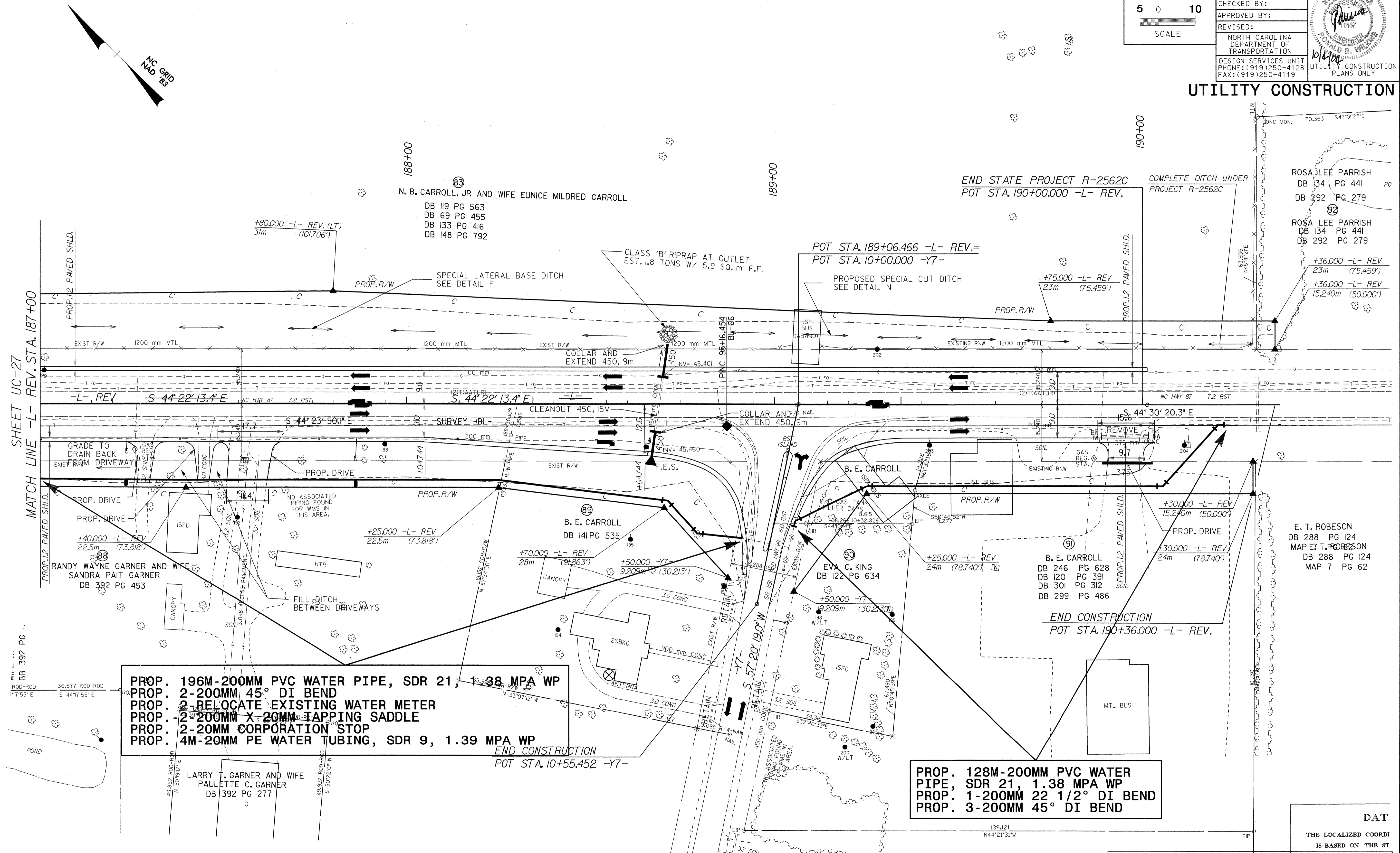


04257

| | | | | |
|---|-----------------------|---------------------------------|-----------|-------|
|  | PROJECT REFERENCE NO. | R-2562C | SHEET NO. | UC-28 |
| | DESIGNED BY: | CSG | | |
|  | DRAWN BY: | CSG | | |
| | CHECKED BY: | | | |
| | APPROVED BY: | | | |
| | REVISED: | | | |
| NORTH CAROLINA DEPARTMENT OF TRANSPORTATION | | UTILITY CONSTRUCTION PLANS ONLY | | |
| DESIGN SERVICES UNIT PHONE: (919)250-4128 FAX: (919)250-4119 | | | | |

UTILITY CONSTRUCTION



PROP. 166M-200MM PVC WATER PIPE, SDR 21, 1.38 MPA WP
PROP. 2-200MM 45° DI BEND
PROP. 2-200MM X 200MM FLAPPING SADDLE
PROP. 2-20MM CORPORATION STOP
PROP. 4M-20MM PE WATER TUBING, SDR 9, 1.39 MPA WP
END CONSTRUCTION
 POT STA. 10+55.452 -Y7-

PROP. 128M-200MM PVC WATER PIPE, SDR 21, 1.38 MPA WP
PROP. 1-200MM 22 1/2° DI BEND
PROP. 3-200MM 45° DI BEND

SEE SHEET 2-B FOR -Y7- INTERSECTION DETAIL
 SEE SHEET 45 FOR -L- REV. PROFILE
 SEE SHEET 47 FOR -Y7- PROFILE

DAT
 THE LOCALIZED COORDINATE IS BASED ON THE STATE NORTHING.

04-OCT-2004 16:03
 s:\projects\2562c\2562c.dwg
 s:\projects\2562c\2562c.dwg