

UTILITIES BY OTHERS

NOTE:
ALL PROPOSED UTILITY WORK
SHOWN ON THIS SHEET WILL
BE DONE BY OTHERS

-L- CURVE DATA

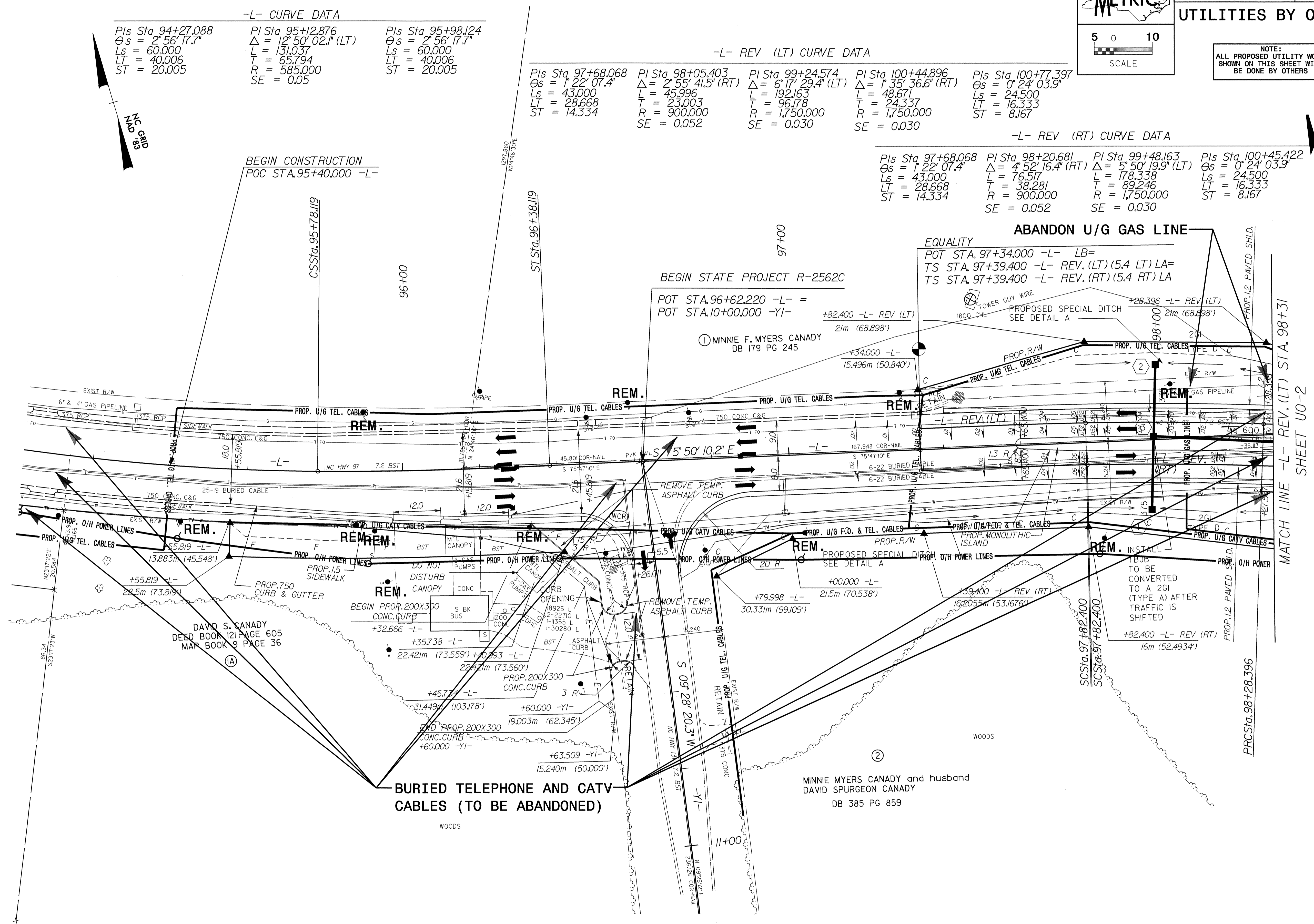
Pls Sta 94+27.088 Os = 2° 56' 17.7" Ls = 60.000 LT = 40.006 ST = 20.005	Pls Sta 95+12.876 Δ = 12° 50' 02.1" (LT) L = 131.037 T = 65.794 R = 585.000 SE = 0.05	Pls Sta 95+98.124 Os = 2° 56' 17.7" Ls = 60.000 LT = 40.006 ST = 20.005
---	--	---

-L- REV (LT) CURVE DATA

Pls Sta 97+68.068 Os = 1° 22' 07.4" Ls = 43.000 LT = 28.668 ST = 14.334	Pls Sta 98+05.403 Δ = 2° 55' 41.5" (RT) L = 45.996 T = 23.003 R = 900.000 SE = 0.052	Pls Sta 99+24.574 Δ = 6° 17' 29.4" (LT) L = 192.163 T = 96.178 R = 1,750.000 SE = 0.030	Pls Sta 100+44.896 Δ = 1° 35' 36.6" (RT) L = 48.671 T = 24.337 R = 1,750.000 SE = 0.030	Pls Sta 100+77.397 Os = 0° 24' 03.9" Ls = 24.500 LT = 16.333 ST = 8.167
---	---	--	--	---

-L- REV (RT) CURVE DATA

Pls Sta 97+68.068 Os = 1° 22' 07.4" Ls = 43.000 LT = 28.668 ST = 14.334	Pls Sta 98+20.681 Δ = 4° 52' 16.4" (RT) L = 76.517 T = 38.281 R = 900.000 SE = 0.052	Pls Sta 99+48.163 Δ = 5° 50' 19.9" (LT) L = 178.338 T = 89.246 R = 1,750.000 SE = 0.030	Pls Sta 100+45.422 Os = 0° 24' 03.9" Ls = 24.500 LT = 16.333 ST = 8.167
---	---	--	---



29-SEP-2004 14:58
p:\edhoib\proj\DS214555\U0\U01.pch