

UTILITIES BY OTHERS

NOTE: ALL PROPOSED UTILITY WORK SHOWN ON THIS SHEET WILL BE DONE BY OTHERS

-L- REV (LT) CURVE DATA

PIs Sta 97+68.068 Os = 1° 22' 07.4" Ls = 43.000 LT = 28.668 ST = 14.334	PI Sta 98+05.403 Δ = 2° 55' 41.5" (RT) L = 45.996 T = 23.003 R = 900.000 SE = 0.052	PI Sta 99+24.574 Δ = 6° 17' 29.4" (LT) L = 192.163 T = 96.178 R = 1,750.000 SE = 0.030
---	--	---

-L- REV (RT) CURVE DATA

PIs Sta 97+68.068 Os = 1° 22' 07.4" Ls = 43.000 LT = 28.668 ST = 14.334	PI Sta 98+20.681 Δ = 4° 52' 16.4" (RT) L = 76.517 T = 38.281 R = 900.600 SE = 0.052	PI Sta 99+48.163 Δ = 5° 50' 19.8" (LT) L = 178.338 T = 89.246 R = 1,750.000 SE = 0.030	PIs Sta 100+45.422 Os = 0° 24' 03.9" Ls = 24.500 LT = 16.333 ST = 8.167
---	--	---	---

PI Sta 100+44.896
Δ = 1° 35' 36.6" (RT)
L = 48.671
T = 24.337
R = 1,750.000
SE = 0.030

PIs Sta 100+77.397
Os = 0° 24' 03.9"
Ls = 24.500
LT = 16.333
ST = 8.167

① MINNIE F. MYERS CANADY
DB 179 PG 245

③ SARAH M. AVERITTE
DB 179 PG 247

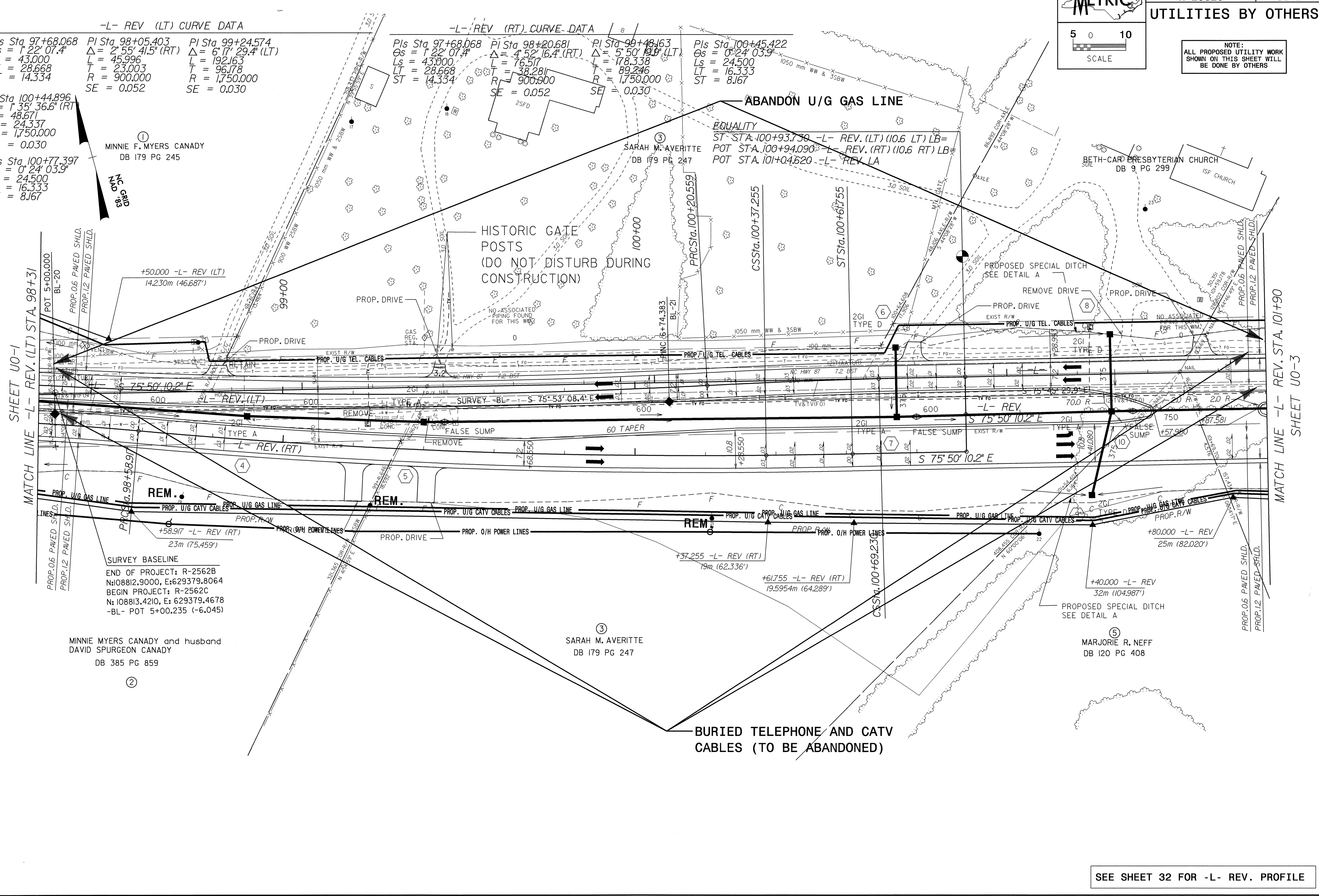
BETH-CAR PRESBYTERIAN CHURCH
DB 9 PG 299

SHEET UO-1

SHEET UO-3

MATCH LINE -L- REV. (LT) STA. 98+31

MATCH LINE -L- REV. STA. 101+90



SURVEY BASELINE
END OF PROJECT: R-2562B
N: 108812.9000, E: 629379.8064
BEGIN PROJECT: R-2562C
N: 108813.4210, E: 629379.4678
-BL- POT 5+00.235 (-6.045)

② MINNIE MYERS CANADY and husband
DAVID SPURGEON CANADY
DB 385 PG 859

③ SARAH M. AVERITTE
DB 179 PG 247

⑤ MARJORIE R. NEFF
DB 120 PG 408

SEE SHEET 32 FOR -L- REV. PROFILE