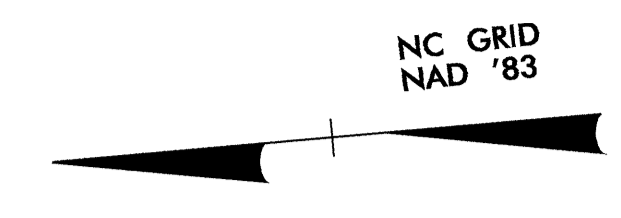
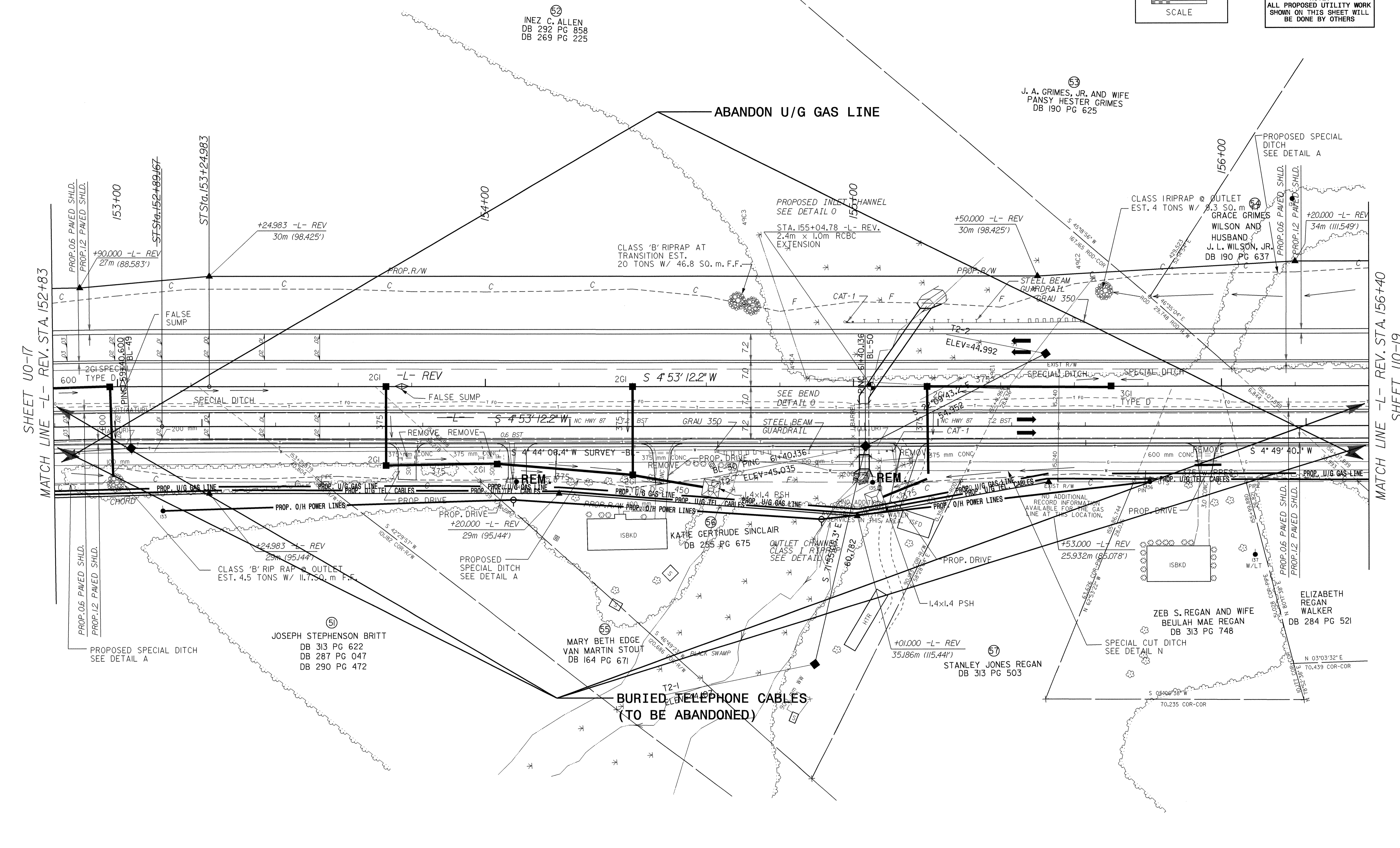


NOTE:
ALL PROPOSED UTILITY WORK
SHOWN ON THIS SHEET WILL
BE DONE BY OTHERS



52
INEZ C. ALLEN
DB 292 PG 858
DB 269 PG 225

53
J. A. GRIMES, JR. AND WIFE
PANSY HESTER GRIMES
DB 190 PG 625



SEE SHEET 40 FOR -L- REV. PROFILE

29-SEP-2004 15:22
R:\Projects\11183\11183.dwg
gschmidt - BT BS214555