

NOTE:
 ALL PROPOSED UTILITY WORK
 SHOWN ON THIS SHEET WILL
 BE DONE BY OTHERS

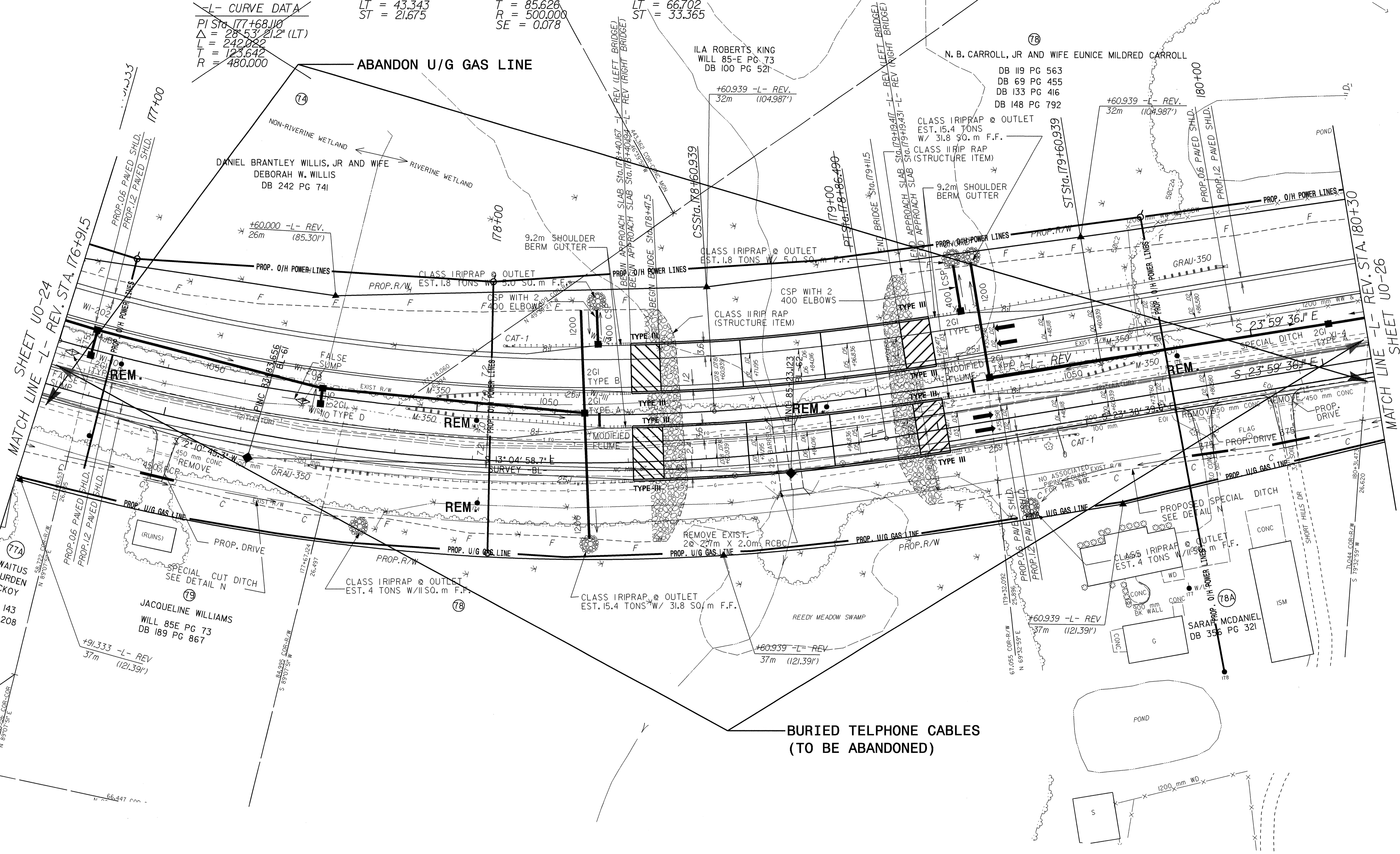
NC GRID
 NAD '83

-L- REX CURVE DATA

Pls Sta 176+69.676 Pls Sta 177+76.959 Pls Sta 178+94.304
 $\theta_s = 3^\circ 43' 27.2''$ $\Delta = 19^\circ 26' 07.5''$ (LT) $\theta_s = 5^\circ 43' 46.5''$
 $L_s = 65.000$ $L = 169.606$ $L_s = 100.000$
 $LT = 43.343$ $T = 85.626$ $LT = 66.702$
 $ST = 21.675$ $R = 500.000$ $ST = 33.365$
 $SE = 0.078$

-L- CURVE DATA
 Pls Sta 177+68.110
 $\Delta = 28^\circ 53' 21.2''$ (LT)
 $L = 242.082$
 $T = 123.642$
 $R = 480.000$

ABANDON U/G GAS LINE



SEE SHEET 44 FOR -L- REV. PROFILE