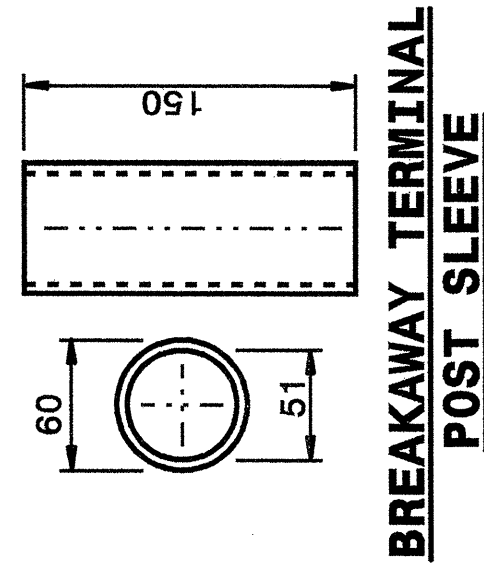


20-MAY-2003 07:54  
 W:\Special Details\forward\stds\02-Stds to Special Details\metric\86202\0862d02m.dgn  
 \*spell AT DS196510

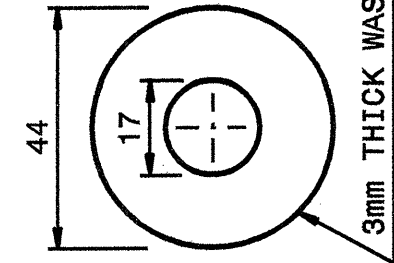
STATE OF  
 NORTH CAROLINA  
 DEPT. OF TRANSPORTATION  
 DIVISION OF HIGHWAYS  
 RALEIGH, N.C.

METRIC DETAIL DRAWING FOR  
**GUARDRAIL INSTALLATION**

SHEET 5 OF 7  
**862D02**



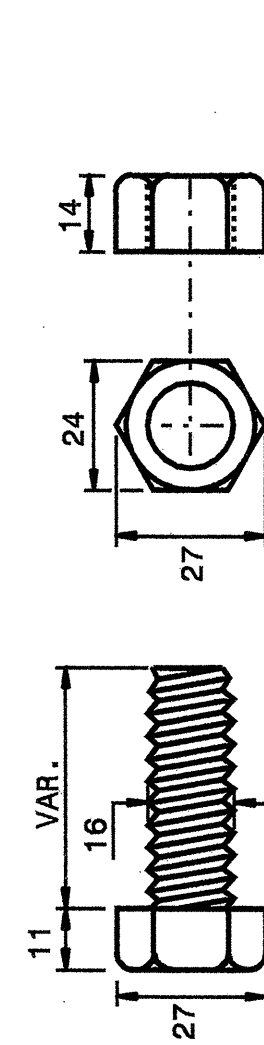
**BREAKAWAY TERMINAL  
 POST SLEEVE**



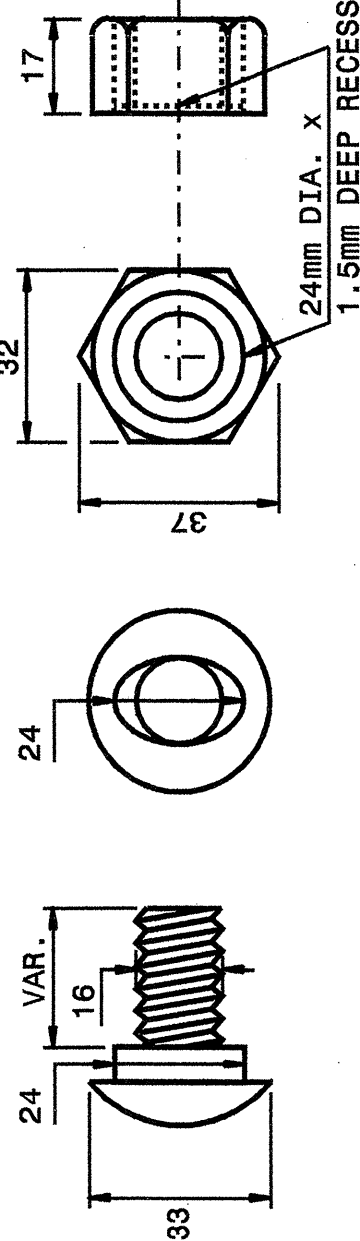
3mm THICK WASHER

**DETAIL OF STANDARD WASHER**

STANDARD WASHER: TYPICAL USE UNDER NUT WITH WOOD POST



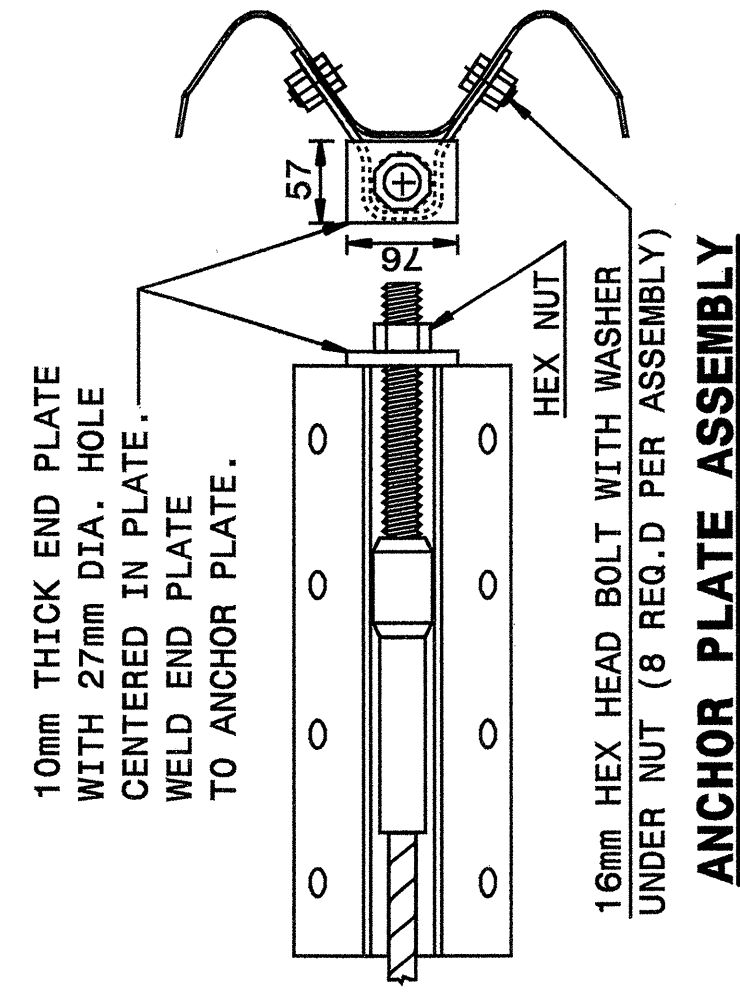
**DETAIL OF STANDARD HEX BOLT AND NUT**



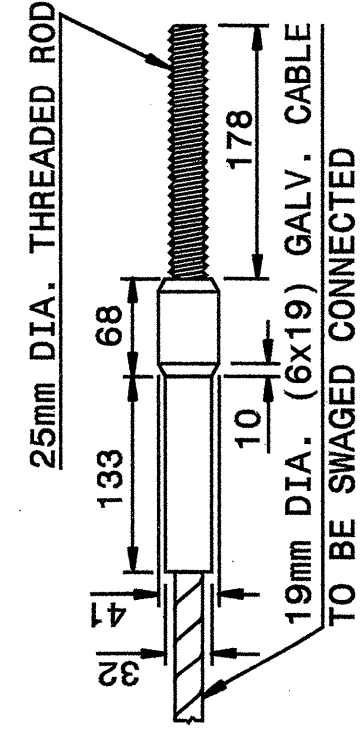
**DETAIL OF BUTTON HEAD BOLT AND NUT**

Note: drawing is dimensioned in millimeters unless otherwise depicted within the drawing.

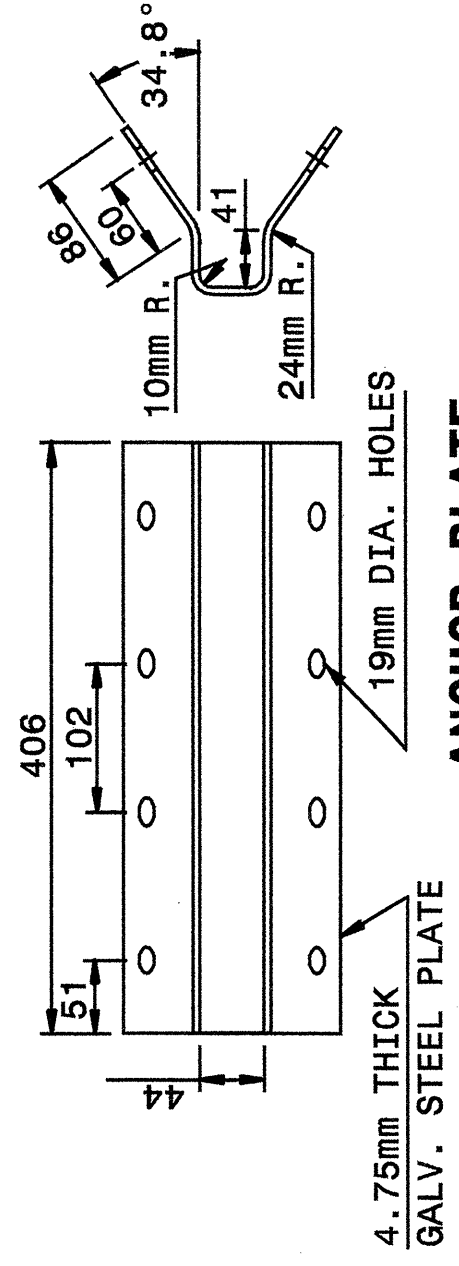
**SYSTEM PARTS**



**ANCHOR PLATE ASSEMBLY**



**SWAGED CABLE**



**ANCHOR PLATE  
 CABLE ASSEMBLY**

METRIC DETAIL DRAWING FOR  
**GUARDRAIL INSTALLATION**

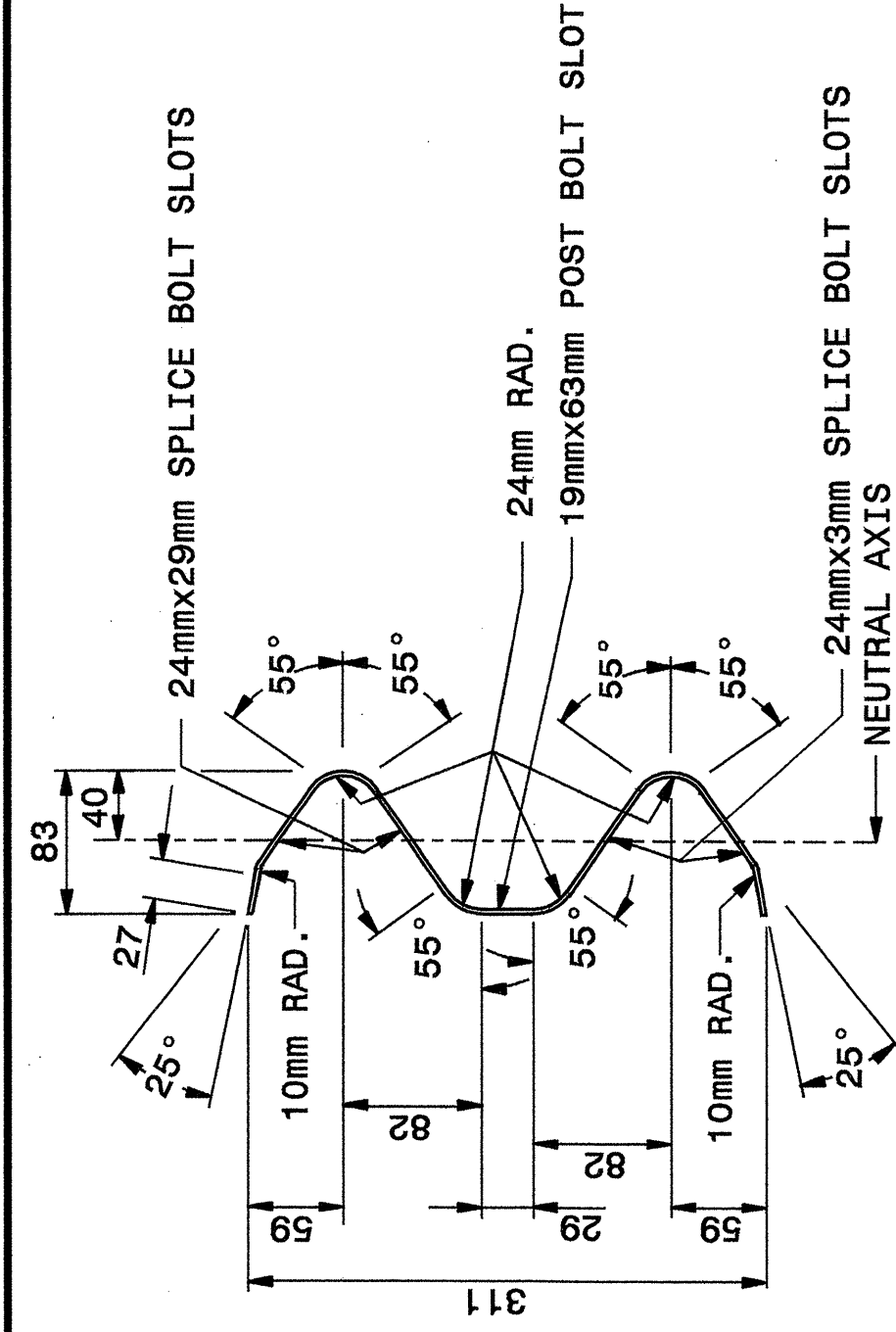
SHEET 5 OF 7  
**862D02**

STATE OF  
 NORTH CAROLINA  
 DEPT. OF TRANSPORTATION  
 DIVISION OF HIGHWAYS  
 RALEIGH, N.C.

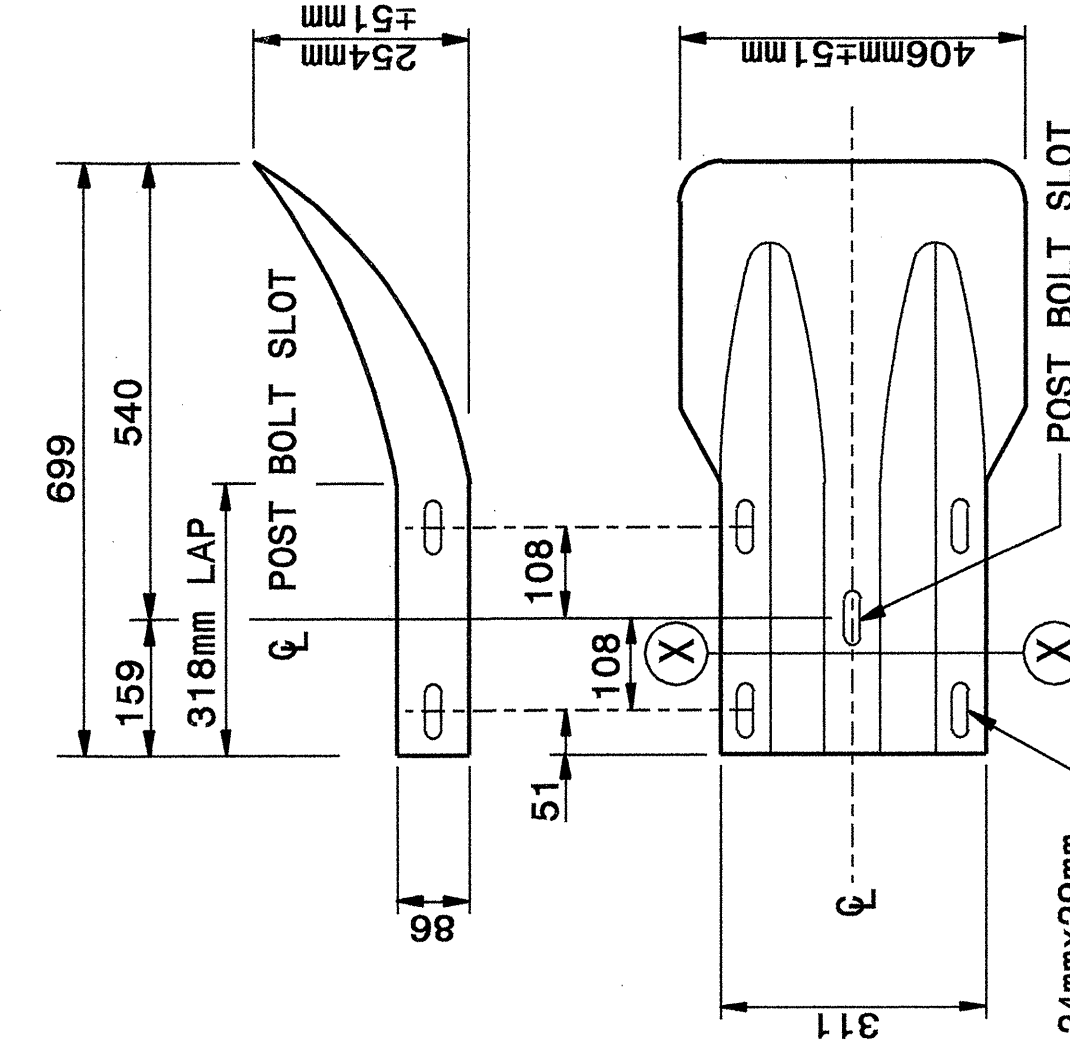
STATE OF  
 NORTH CAROLINA  
 DEPT. OF TRANSPORTATION  
 DIVISION OF HIGHWAYS  
 RALEIGH, N.C.

METRIC DETAIL DRAWING FOR  
**GUARDRAIL INSTALLATION**

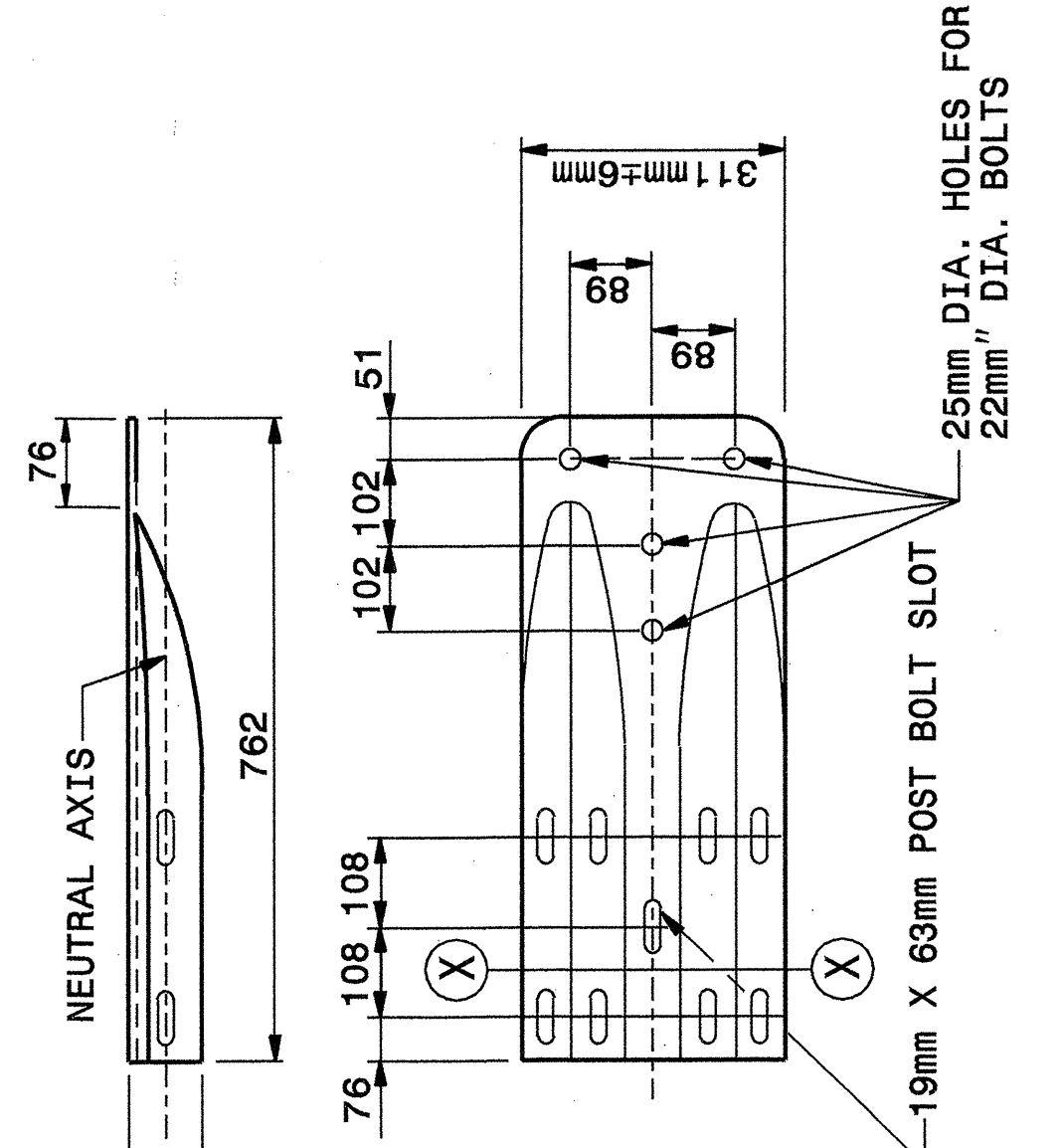
SHEET 6 OF 7  
**862D02**



**SECTION X-X**



**TERMINAL END SECTION**  
 Note: drawing is dimensioned in millimeters unless otherwise depicted within the drawing.



**TYPICAL END SHOE**  
**SYSTEM PARTS - GENERAL USE**

METRIC DETAIL DRAWING FOR  
**GUARDRAIL INSTALLATION**

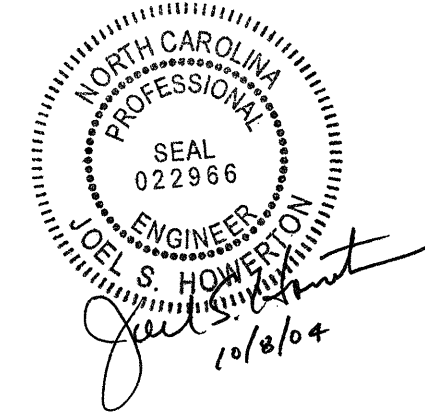
SHEET 6 OF 7  
**862D02**

STATE OF  
 NORTH CAROLINA  
 DEPT. OF TRANSPORTATION  
 DIVISION OF HIGHWAYS  
 RALEIGH, N.C.

DESIGN SERVICES UNIT  
 STANDARDS AND SPECIAL DESIGN  
 Office 919-250-4128 FAX 919-250-4119

**SEE PLATE FOR TITLE**

ORIGINAL BY: 2002 STD.862.02 DATE:  
 MODIFIED BY: E.E. WARD DATE: 02-09-03  
 CHECKED BY: *[Signature]* DATE: 5-03  
 FILE SPEC.: /usr/stds/02todet/1/metric/86202/862d02m.dgn



PROJECT REFERENCE NO. R-2562C SHEET NO. 2-J