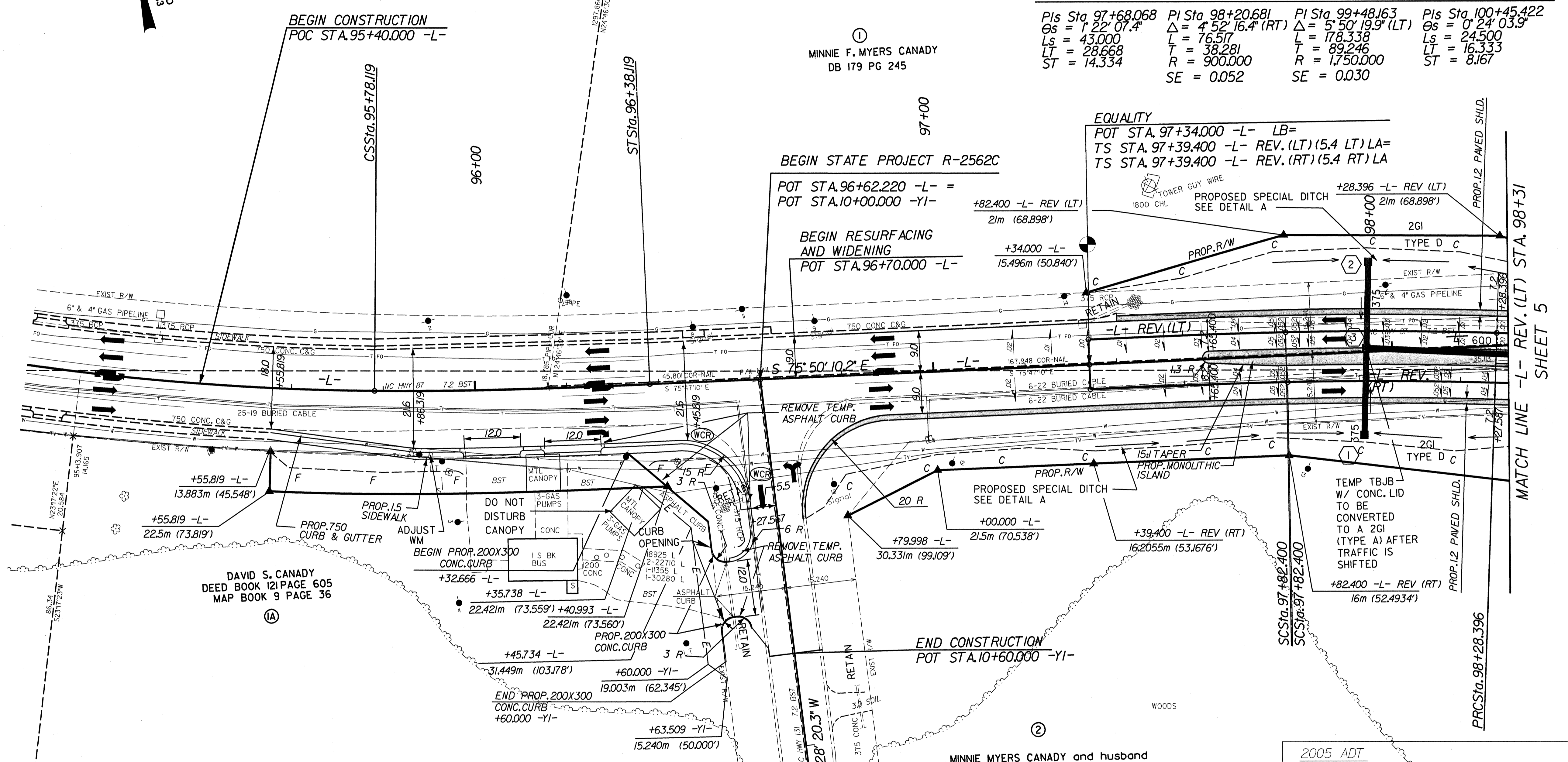
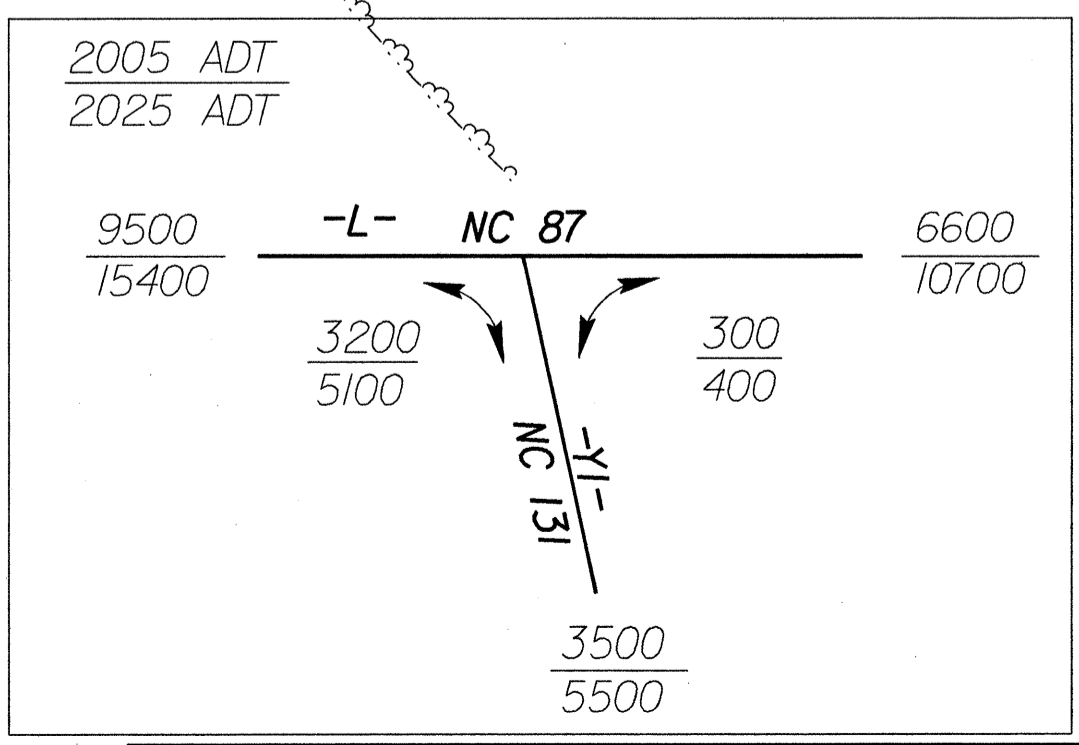


-L- CURVE DATA			-L- REV (LT) CURVE DATA				-L- REV (RT) CURVE DATA				
Pls Sta 94+27.088 Os = 2° 56' 17.7" Ls = 60.000 LT = 40.006 ST = 20.005	PI Sta 95+12.876 Δ = 12° 50' 02.1" (LT) L = 131.037 T = 65.794 R = 585.000 SE = 0.05	Pls Sta 95+98.124 Os = 2° 56' 17.7" Ls = 60.000 LT = 40.006 ST = 20.005	Pls Sta 97+68.068 Os = 1° 22' 07.4" Ls = 43.000 LT = 28.668 ST = 14.334	PI Sta 98+05.403 Δ = 2° 55' 41.5" (RT) L = 45.996 T = 23.003 R = 900.000 SE = 0.052	PI Sta 99+24.574 Δ = 6° 17' 29.4" (LT) L = 192.163 T = 96.178 R = 1,750.000 SE = 0.030	PI Sta 100+44.896 Δ = 1° 35' 36.6" (RT) L = 48.671 T = 24.337 R = 1,750.000 SE = 0.030	Pls Sta 100+77.397 Os = 0° 24' 03.9" Ls = 24.500 LT = 16.333 ST = 8.167	Pls Sta 97+68.068 Os = 1° 22' 07.4" Ls = 43.000 LT = 28.668 ST = 14.334	PI Sta 98+20.681 Δ = 4° 52' 16.4" (RT) L = 76.517 T = 38.281 R = 900.000 SE = 0.052	PI Sta 99+48.163 Δ = 5° 50' 19.9" (LT) L = 178.338 T = 89.246 R = 1,750.000 SE = 0.030	Pls Sta 100+45.422 Os = 0° 24' 03.9" Ls = 24.500 LT = 16.333 ST = 8.167



**DATUM DESCRIPTION**  
 THE LOCALIZED COORDINATE SYSTEM DEVELOPED FOR THIS PROJECT IS BASED ON THE STATE PLANE COORDINATES ESTABLISHED BY NCGS FOR MONUMENT "CECIL" WITH NAD 83 STATE PLANE GRID COORDINATES OF NORTHING: 102527.1910(m) EASTING: 635512.5230(m) THE AVERAGE COMBINED GRID FACTOR USED ON THIS PROJECT (GROUND TO GRID) IS .999920683 THE N.C. LAMBERT GRID BEARING LOCALIZED HORIZONTAL GROUND DISTANCE FROM "CECIL" TO -L- STATION 96+62.220 IS N 34 DEGREES 10 MINUTES 31.4 SECONDS W, 7647.4 m ALL LINEAR DIMENSIONS ARE LOCALIZED HORIZONTAL DISTANCES VERTICAL DATUM USED IS NGVD 29

- DRIVEWAY NOTES:**
- ALL PROP. DRIVEWAY RADII 3.0m UNLESS OTHERWISE SHOWN.
  - OTHER. DRIVEWAY WIDTHS AT END OF RADII SHALL BE 4.9m MIN. UNLESS OTHERWISE SHOWN. TAPER DRIVEWAY TO EXISTING DRIVEWAY WIDTH.



SEE SHEET 32 FOR -L- REV. PROFILE

MATCH LINE -L- REV. (LT) STA. 98+31

SHEET 5