

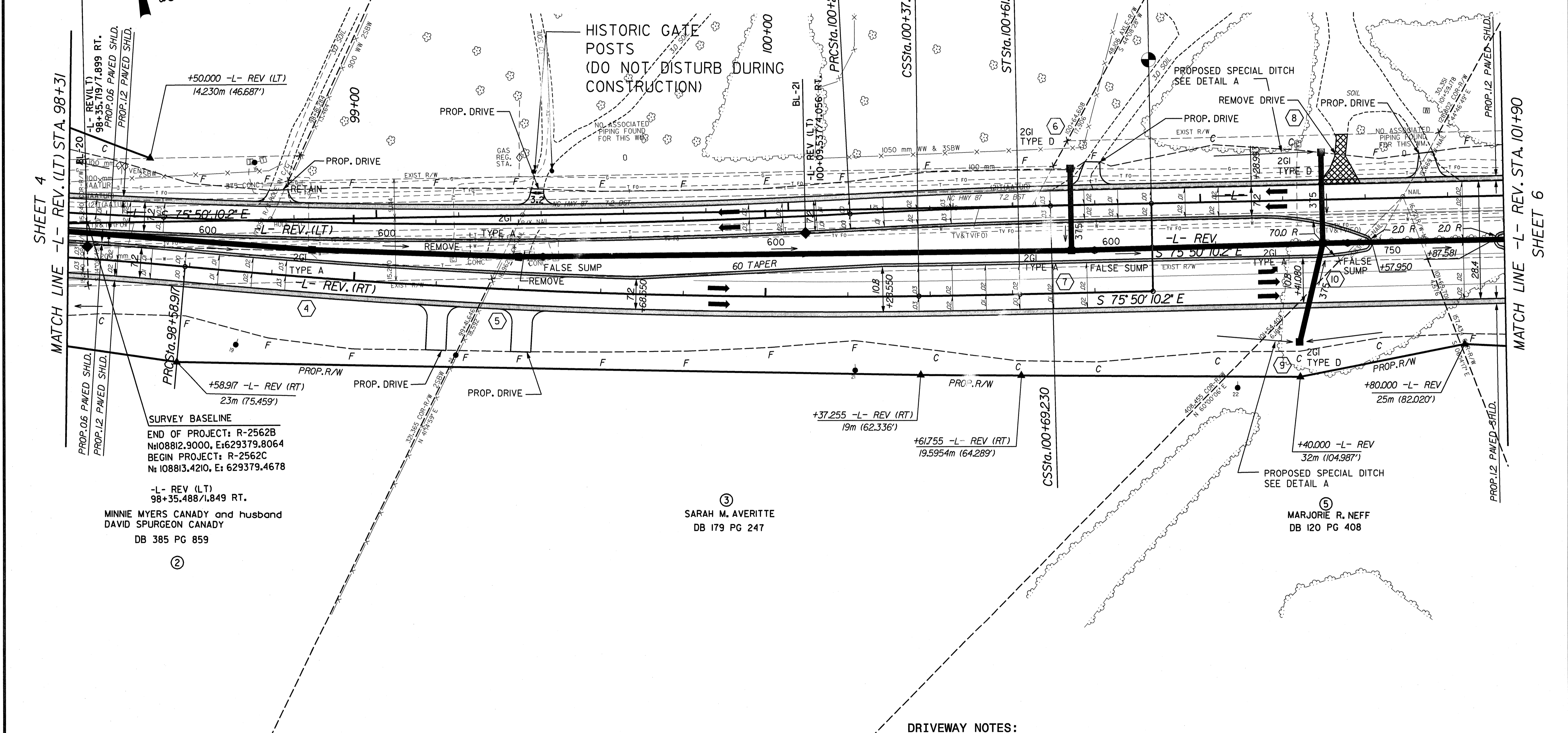
-L- REV (LT) CURVE DATA

PIs Sta 97+68.068 Os = 1° 22' 07.4" Ls = 43.000 LT = 28.668 ST = 14.334	PI Sta 98+05.403 Δ = 2° 55' 41.5" (RT) L = 45.996 T = 23.003 R = 900.000 SE = 0.052	PI Sta 99+24.574 Δ = 6° 17' 29.4" (LT) L = 192.163 T = 96.178 R = 1,750.000 SE = 0.030
PI Sta 100+44.896 Δ = 1° 35' 36.6" (RT) L = 48.671 T = 24.337 R = 1,750.000 SE = 0.030		
PIs Sta 100+77.397 Os = 0° 24' 03.9" Ls = 24.500 LT = 16.333 ST = 8.167		

-L- REV (RT) CURVE DATA

PIs Sta 97+68.068 Os = 1° 22' 07.4" Ls = 43.000 LT = 28.668 ST = 14.334	PI Sta 98+20.681 Δ = 4° 52' 16.4" (RT) L = 76.517 T = 38.281 R = 900.000 SE = 0.052	PI Sta 99+48.163 Δ = 5° 50' 19.9" (LT) L = 178.338 T = 89.246 R = 1,750.000 SE = 0.030	PIs Sta 100+45.422 Os = 0° 24' 03.9" Ls = 24.500 LT = 16.333 ST = 8.167
---	--	---	---

EQUALITY
 ST STA. 100+93.730 -L- REV. (LT) (10.6 LT) LB=
 POT STA. 100+94.090 -L- REV. (RT) (10.6 RT) LB=
 POT STA. 101+04.620 -L- REV. LA



SURVEY BASELINE
 END OF PROJECT: R-2562B
 N: 108812.9000, E: 629379.8064
 BEGIN PROJECT: R-2562C
 N: 108813.4210, E: 629379.4678

-L- REV (LT)
 98+35.488/1.849 RT.
 MINNIE MYERS CANADY and husband
 DAVID SPURGEON CANADY
 DB 385 PG 859

③
 SARAH M. AVERITTE
 DB 179 PG 247

⑤
 MARJORIE R. NEFF
 DB 120 PG 408

- DRIVEWAY NOTES:**
1. ALL PROP. DRIVEWAY RADII 3.0m UNLESS OTHERWISE SHOWN.
 2. PROP. DRIVEWAY WIDTHS AT END OF RADII SHALL BE 4.9m MIN. UNLESS OTHERWISE SHOWN. TAPER DRIVEWAY TO EXISTING DRIVEWAY WIDTH.

SEE SHEET 32 FOR -L- REV. PROFILE

08/24/2010 10:58:11 AM
 C:\PROJECTS\2562C\2562C.DWG
 USER: JAVIER