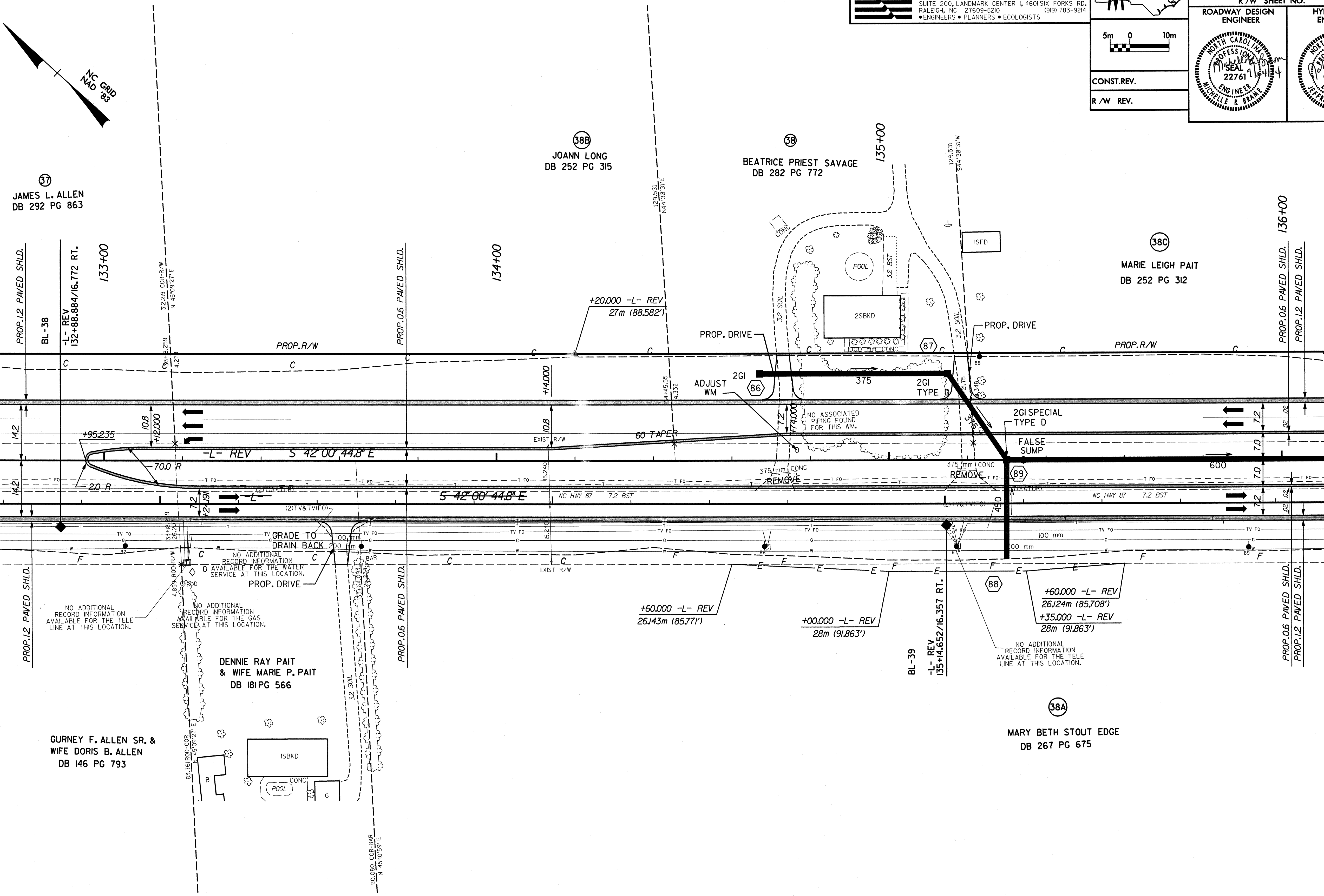


SHEET 14
MATCH LINE -L- REV. STA. 132+71.5

MATCH LINE -L- REV. STA. 136+11.5
SHEET 16



- DRIVEWAY NOTES:**
1. ALL PROP. DRIVEWAY RADII 3.0m UNLESS OTHERWISE SHOWN.
 2. PROP. DRIVEWAY WIDTHS AT END OF RADII SHALL BE 4.9m MIN. UNLESS OTHERWISE SHOWN. TAPER DRIVEWAY TO EXISTING DRIVEWAY WIDTH.

SEE SHEET 37 FOR -L- REV. PROFILE

DATE PLOTTED: 08/25/04