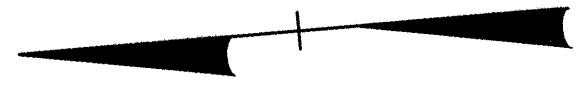


NC GRID  
NAD '83



INEZ C. ALLEN  
DB 292 PG 858  
DB 269 PG 225

J. A. GRIMES, JR. AND WIFE  
PANSY HESTER GRIMES  
DB 190 PG 625

KCI Associates  
of North Carolina, P.A.  
SUITE 200, LANDMARK CENTER I, 4601 SIX FORKS RD.  
RALEIGH, NC 27609-5210 (919) 783-9214  
• ENGINEERS • PLANNERS • ECOLOGISTS

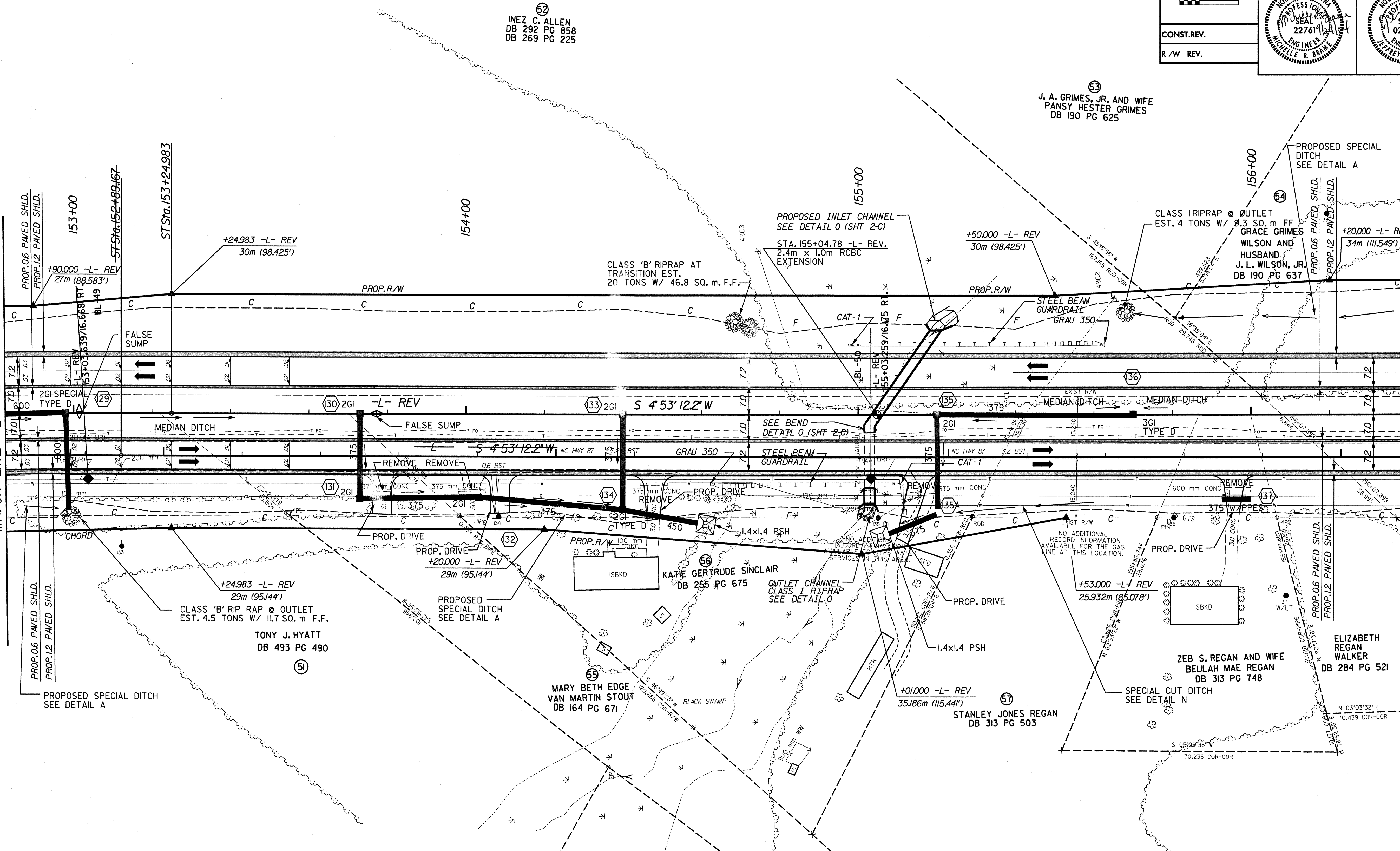
METRIC

CONST. REV.  
R/W REV.

PROJECT REFERENCE NO. R-2562C	SHEET NO. 21
R/W SHEET NO.	
ROADWAY DESIGN ENGINEER	HYDRAULICS ENGINEER

SHEET 20  
MATCH LINE -L- REV. STA. 152+83

MATCH LINE -L- REV. STA. 156+40  
SHEET 22



- DRIVEWAY NOTES:
1. ALL PROP. DRIVEWAY RADII 3.0m UNLESS OTHERWISE SHOWN.
  2. PROP. DRIVEWAY WIDTHS AT END OF RADII SHALL BE 4.9m MIN. UNLESS OTHERWISE SHOWN. TAPER DRIVEWAY TO EXISTING DRIVEWAY WIDTH.

SEE SHEET 40 FOR -L- REV. PROFILE

08/25/2008  
KCI Associates of North Carolina, P.A.  
SUITE 200, LANDMARK CENTER I, 4601 SIX FORKS RD.  
RALEIGH, NC 27609-5210  
JLW