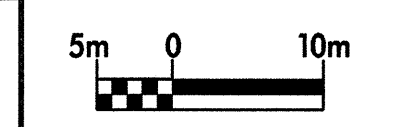
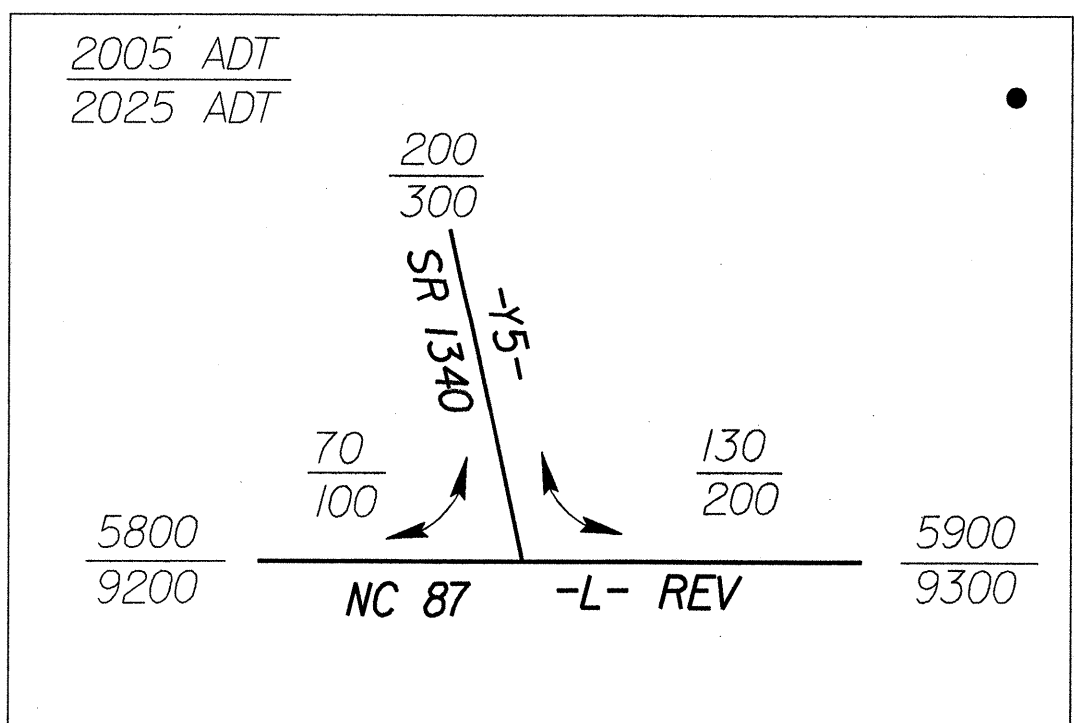
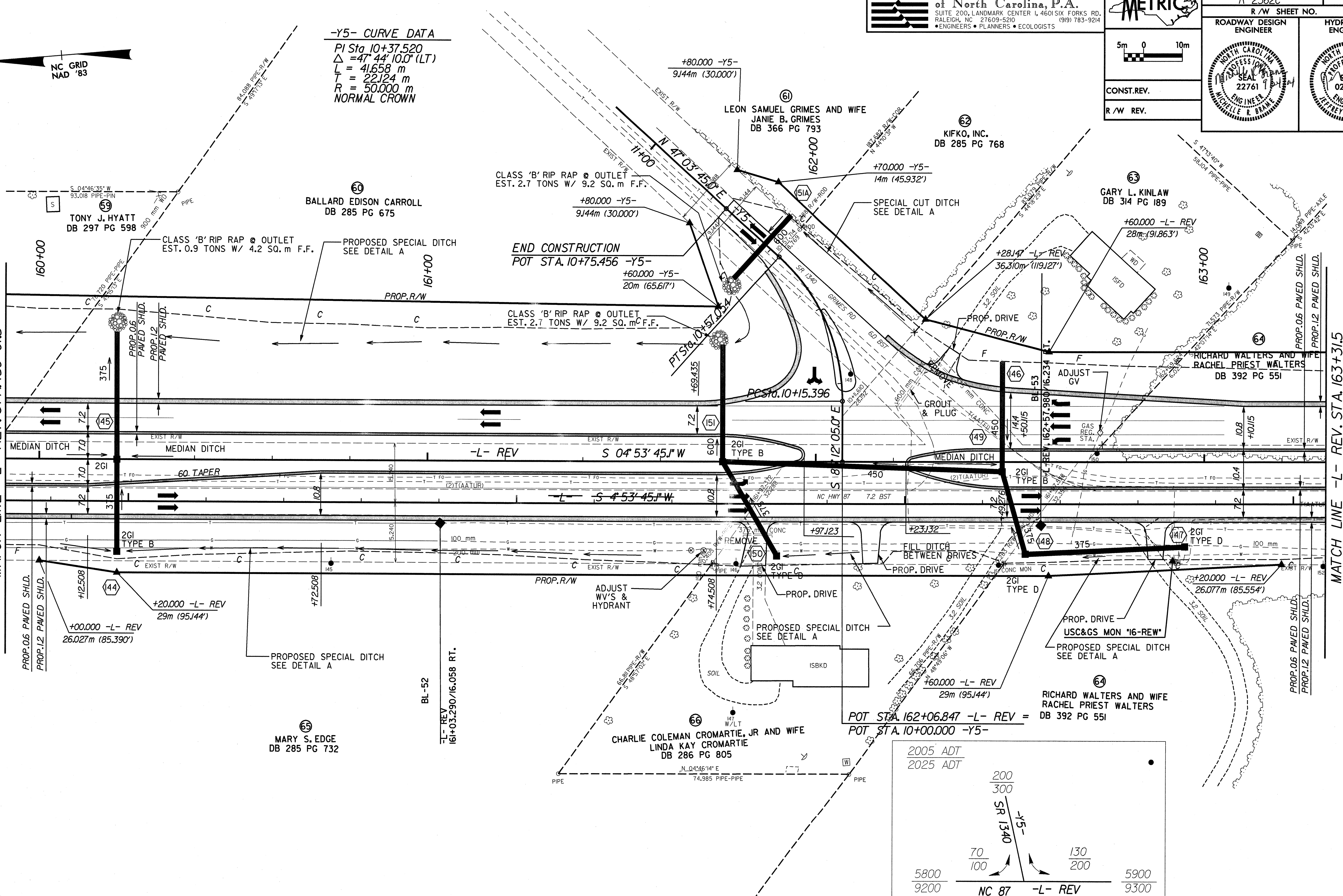


-Y5- CURVE DATA
 PI Sta 10+37.520
 $\Delta = 47^{\circ} 44' 10.0''$ (LT)
 L = 41.658 m
 T = 22.124 m
 R = 50.000 m
 NORMAL CROWN



SHEET 22
MATCH LINE -L- REV. STA. 159+91.5

MATCH LINE -L- REV. STA. 163+31.5
SHEET 24



- DRIVEWAY NOTES:**
- ALL PROP. DRIVEWAY RADII 3.0m UNLESS OTHERWISE SHOWN.
 - PROP. DRIVEWAY WIDTHS AT END OF RADII SHALL BE 4.9m MIN. UNLESS OTHERWISE SHOWN.
- SEE SHEET 2-B FOR -Y5- INTERSECTION DETAIL
 SEE SHEET 41 FOR -L- REV. PROFILE
 TAPER DRIVEWAY TO EXISTING DRIVEWAY WIDTH. SEE SHEET 47 FOR -Y5- PROFILE