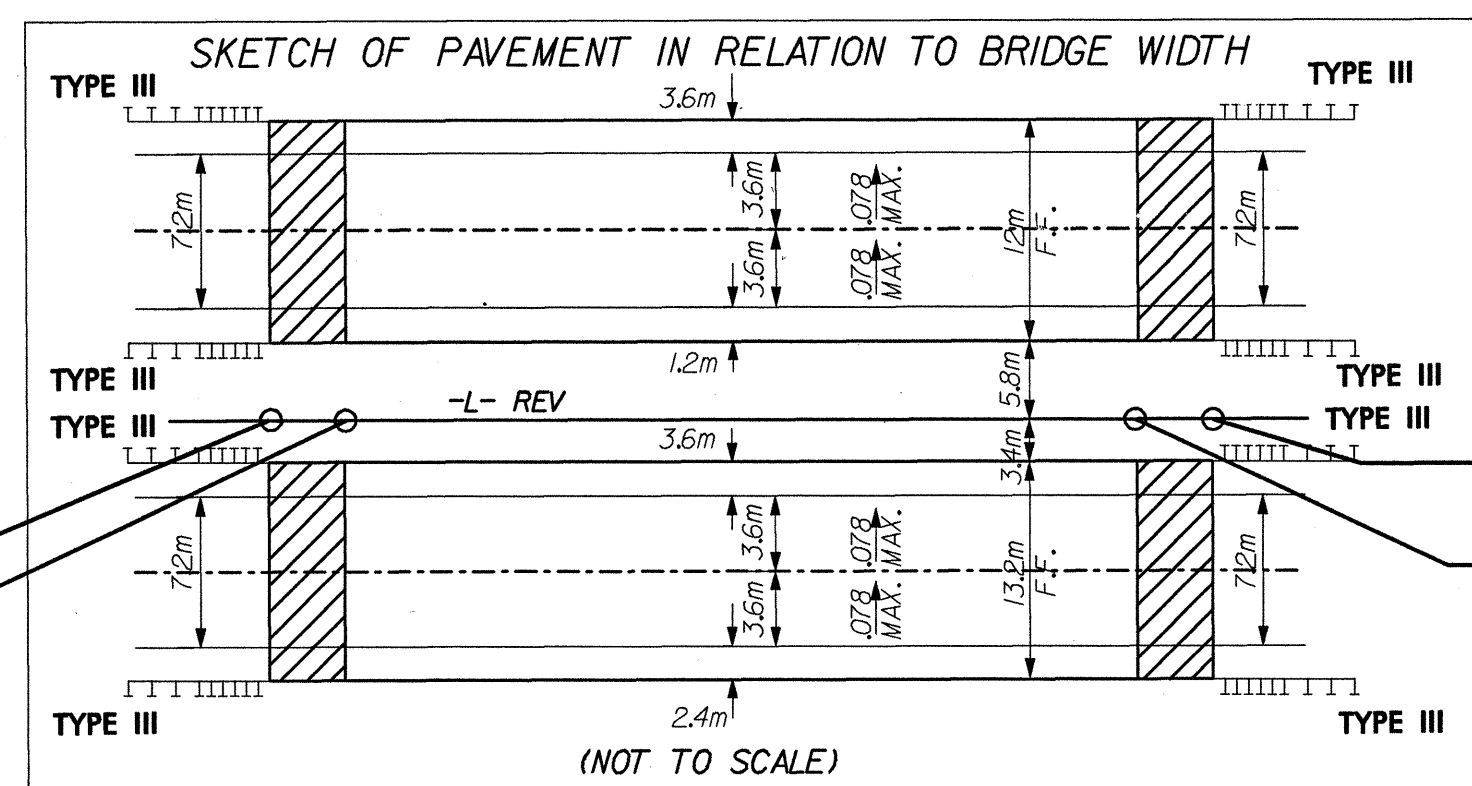
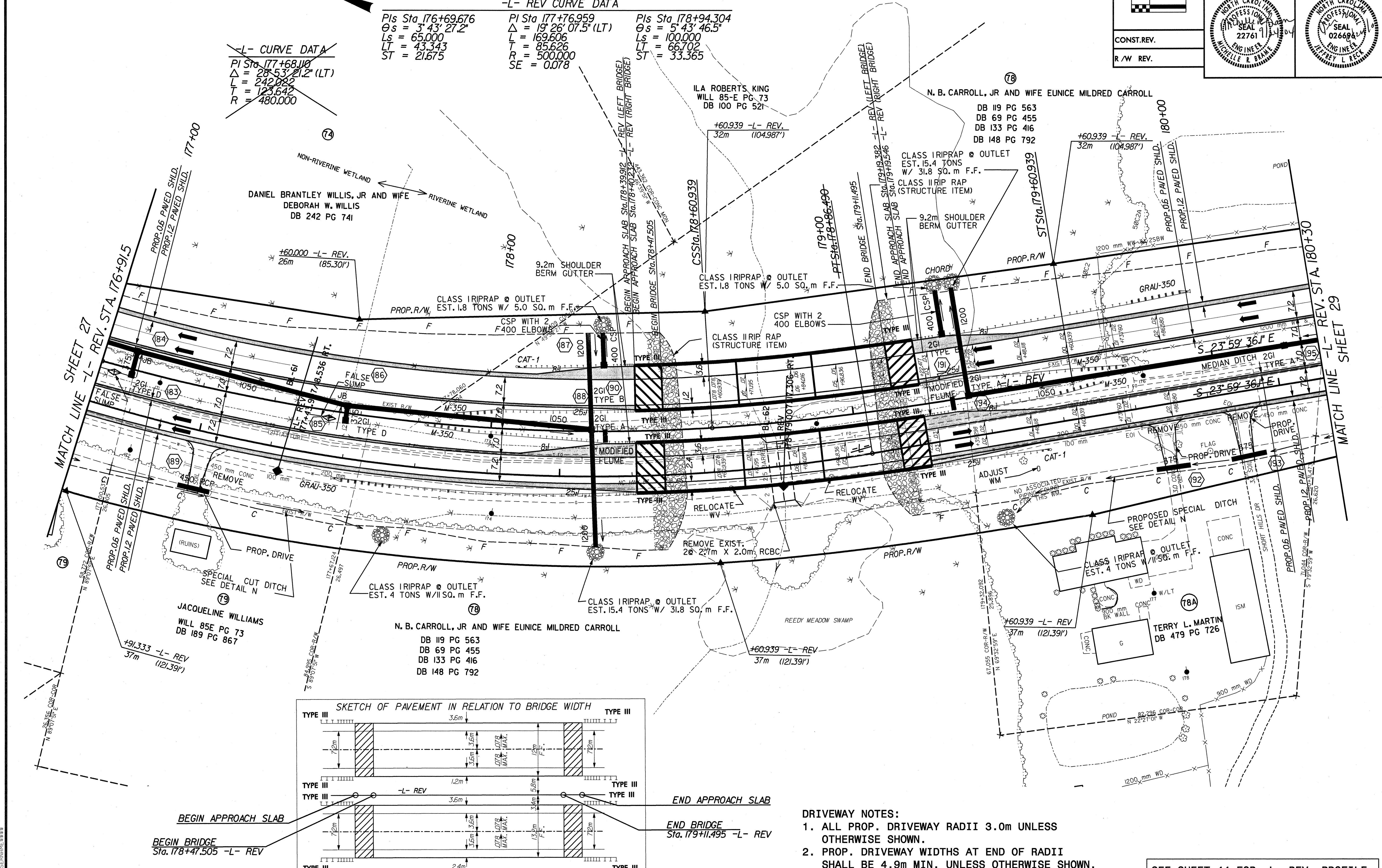


**-L- REV CURVE DATA**

Pls Sta 176+69.676 θs = 3° 43' 27.2" Ls = 65.000 LT = 43.343 ST = 21.675	Pls Sta 177+76.959 Δ = 19° 26' 07.5" (LT) L = 169.606 T = 85.626 R = 500.000 SE = 0.078	Pls Sta 178+94.304 θs = 5° 43' 46.5" Ls = 100.000 LT = 66.702 ST = 33.365
--	--	---

**-L- CURVE DATA**  
 Pls Sta 177+68.110  
 Δ = 28° 53' 21.2" (LT)  
 L = 242.082  
 T = 123.642  
 R = 480.000



- DRIVEWAY NOTES:**
1. ALL PROP. DRIVEWAY RADII 3.0m UNLESS OTHERWISE SHOWN.
  2. PROP. DRIVEWAY WIDTHS AT END OF RADII SHALL BE 4.9m MIN. UNLESS OTHERWISE SHOWN. TAPER DRIVEWAY TO EXISTING DRIVEWAY WIDTH.

SEE SHEET 44 FOR -L- REV. PROFILE